

WHMIS QUIZ

NAME: _____ DATE: _____

DEPARTMENT: _____ PHONE #: _____

FLOOR/ROOM #: _____ SITE: _____

Instructions: For multiple choice questions, select only one answer.

1. What do the letters WHMIS stand for? _____

2. What three methods does WHMIS use to inform workers of the hazards of the products that they work with?

- a) Communication, Protection, Disposal
- b) MSDS, Training, Labeling
- c) Working, Labeling, Protecting
- d) Pouring, Mixing, Cleaning Up

3. WHMIS informs workers of the hazards associated with?

- (a) Controlled products such as chemicals and biohazards
- (b) Controlled products such as chemicals, biohazards and drugs
- (c) All controlled products
- (d) Hazardous materials and equipment

4. What is a Material Safety Data Sheet (MSDS)?

- (a) A product that must be used safely
- (b) A label that details the hazards of a product
- (c) A document that details how to use a product, including how to apply the product, how to mix the product
- (d) A technical document that details such things as properties, contents, precautions and safe handling procedures of a controlled product

PAGE 2
WHMIS QUIZ

NAME: _____ **SITE:** _____

5. A Material Safety Data Sheet (MSDS) must be less than how old?

- (a) 1 year
- (b) 3 years
- (c) 5 years
- (d) It doesn't matter

6. What information would you expect to find on a MSDS? Circle all that apply.

- (a) Product information
- (b) First Aid Measures
- (c) Physical data
- (d) Responsibilities
- (e) Fire and Explosive Data
- (f) Reactivity Data
- (g) Shift Schedules

7. WHMIS symbol for Oxidizing Materials is:

- (a) skull and crossbones in a circle
- (b) "R" and test tube in a circle
- (c) an O with flames on top
- (d) a bony hand in a circle

8. When handling chemicals, you should:

- (a) Pour the chemical back into its original container
- (b) Pour the chemical down the drain
- (c) Use only the approved method of waste disposal
- (d) None of the above

9. Any chemical that acts like oxygen or gives off oxygen is called an:

- (a) Oxymoron
- (b) Oxyhydrogen
- (c) Oxidizer
- (d) Oxytocin

**PAGE 3
WHMIS QUIZ**

NAME: _____ **SITE:** _____

10. Answer the following true or false.

- | | | |
|------|-------|--|
| True | False | MSDS sheets can be kept in an office and locked up. |
| True | False | Flammable means that the material will burn or catch on fire easily at normal temperatures. |
| True | False | All containers of controlled products should have WHMIS labels. |
| True | False | Canadian MSDS is valid for 5 years. |
| True | False | If a chemical is poured from the original container into a smaller container, the smaller container needs a workplace label. |
| True | False | WHMIS symbol of "T" inside a circle represents Poisonous and Infectious Materials – Immediate and Serious Toxic effects. |

11. Where are the MSDSs kept in the area where you work?

12. Who is responsible for providing Material Safety Data Sheets (MSDS) for incoming orders of controlled products?

- (a) Supplier
- (b) Employer
- (c) Department of Labour
- (d) Joint Occupational Health and Safety Committee (JOHSC)









13. Training must enable the workers to understand procedures for:

- (a) Purchasing labels for controlled products
- (b) Ordering controlled products from the supplier
- (c) Proper filing of the Material Safety Data Sheet
- (d) Safe handling, use, storage and disposal of a controlled product

PAGE 4
WHMIS QUIZ

NAME: _____ SITE: _____

Match the WHMIS hazard symbol with the correct WHMIS class. Type or write the WHMIS classification letter on the line provided.

SYMBOL	ANSWER	CLASS/DESCRIPTION
	_____	C Oxidizer. These materials may make fires burn more vigorously and should not be stored with combustibles.
	_____	B Flammable and Combustible. These materials present a fire hazard.
	_____	D3 Poisonous and Infectious, Biohazardous Infectious. Examples include disease causing viruses and bacteria.
	_____	A Compressed Gas. Substance under pressure. May explode if improperly handled.
	_____	D1 Poisonous and Infectious, Immediate and Effects. These materials may cause short-term, or acute, irreversible damage to tissues, or an immediately life threatening injury.
	_____	E Corrosive. May causes serious burns to the skin, eyes and respiratory tract.
	_____	F Dangerously Reactive. A violent reaction may occur if this material is heated or subject to shock.
	_____	D2 Poisonous and Infectious, Causing Other Toxic Effects. May cause chronic or long-term injury such as cancer or organ damage.

NAME: _____

DEPT: _____

PERSONAL PROTECTIVE EQUIPMENT (PPE)

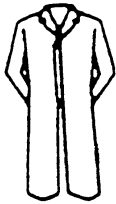
Identify each picture. Value = 2 points per picture. See W.I.S.H. Pocket Chart.





















WHMIS SYMBOLS QUIZ

NAME: _____ SITE: _____
DEPT: _____ DATE: _____

Instructions: Draw a line from each class on the left side of the page to the correct symbol on the right side.

CLASS B - Flammable and Combustible Materials



CLASS A – Compressed Gas



CLASS D1 – Immediate and Serious Toxic Effects



CLASS C – Oxidizing Materials



CLASS D3 – Biohazardous Infectious Materials



CLASS D2 – Causing Other Toxic Effects



CLASS F – Dangerously Reactive Materials



CLASS E – Corrosive Materials



WHMIS – PRODUCT SPECIFIC QUIZ

Instructions: Select a product that you use in your department, unit, facility. Ask staff to read and refer to the MSDS for the product you selected to answer the following questions.

Product: _____

1. I would wear the following personal protective equipment when handling this product:

2. This product should be stored in the following manner:

3. This product can enter the body by the following routes:

4. First aid measures for splash or exposure to skin with this product are:

5. This product is harmful and the effects of acute or chronic exposure are:

6. The expiry date of this Material Safety Data Sheet (MSDS) is:

Name: _____

Dept: _____

Date: _____

WHMIS QUIZ

NAME: _____ DATE: _____

DEPARTMENT: _____ PHONE #: _____

FLOOR/ROOM #: _____ SITE: _____

Instructions: Place an X beside the correct answer. Select only one.

1. The WHMIS symbol of a flame inside a circle represents:
 - Oxidizing Materials
 - Dangerously Reactive Materials
 - Flammable and Combustible Materials
 - Poisonous and Infectious Materials – Causing Other Toxic Effects

2. A **M**aterial **S**afety **D**ata **S**heet (MSDS) is valid for:
 - 3 years
 - 5 years
 - 1 year
 - 2 years

3. WHMIS DOES NOT include one of the following groups:
 - Oxidizing and poisonous/infectious materials
 - Alcohol, Drugs and Tobacco
 - Corrosive and dangerously reactive materials
 - Compressed gas and flammable/combustible materials

4. The best way to protect yourself from hazards is:
 - Wear gloves at all times
 - Always wear a respirator
 - Ensure that the workplace equipment matches the hazard
 - Wear a wet suit

5. The purpose of WHMIS is to:
 - Provide information about hazardous material
 - To help identify hazards in the workplace
 - To educate workers about hazardous materials so they can protect themselves
 - All of the above

6. To report a safety concern you should first:
 - Tell your supervisor or the person in charge
 - Call the Department of Labour
 - Contact the Joint Occupational Health and Safety Committee
 - Call Occupation Health

NAME: _____

SITE: _____

7. When you are working with a hazardous chemical, you should always:
 - Read the label
 - Check the Material Safety Data Sheet (MSDS)
 - Know the hazard
 - All of the above

8. Under WHMIS, hazardous materials are referred to as:
 - Prohibited products
 - Controlled products
 - Designated substances
 - Restricted products

9. WHMIS education must be reviewed by each staff member:
 - Every year
 - Only during orientation
 - Every three years
 - Every two years

10. Common ways that hazardous substances can enter the body:
 - Inhalation
 - Ingestion
 - Skin contact/absorption
 - Eye contact
 - All of the above

11. WHMIS is an important part of legislation because it:
 - Creates employment
 - Standardizes work procedures
 - Alerts people to hazards of materials used in the workplace
 - Regulates inventories

12. If you transfer hazardous material from one container to another container, you must:
 - Place the new container in a storage room below 20 degrees Celsius
 - Apply a workplace label on the new container
 - Notify the supplier
 - Remove the supplier label and attach to the new container

13. Hazardous material with an acute effect:
 - Will effect you on short-term exposure
 - May take years to develop a problem
 - Will not harm you at all
 - Will not effect you very much

14. Reactivity data is required on the following:
 - Supplier label
 - Material Safety Data Sheet (MSDS)
 - First Aid procedures
 - Product identifier

WHMIS Word Search

Instructions: Find the words listed below and circle them in this word search.

M A N A G E C I D E N T I F I E R A C
A S E E A L X S D A N G E R O U S L Y
N L D E S R O R L I Y C I N C T E U L
U L V S I L Z R E G D T C I O L C E I
F G A C R E D L I W I T N I B L C E N
A H L Q R B T E H G E O N A O D P R D
C R A I J A L F S K R M M D R E R M E
T E E Y O L P M E H D M G R V S Y P R
U S H N D T A W C B A U T I B S F X U
R I S K E J X G A L Y H E M C E R E K
E D O O H E M U F O O T W E A R Y G M
R I G U T P S I I N H R M W N P H L A
E X P I R E R T R H O M O H U M L T R
A O T D V E W E S F D R J T T O C R G
C H L O E I B N T I U R P C E C W G O
T R L H R E D O A B M H F A C U T E T
I G O G G L E S I H N H D L E P P V C
V L B U T T C U D O R P W H O R S E I
E X P L O S I V E C A L P K R O W X P

Can you find these words?

Acute	Fire	Manufacturer
Apron	First Aid	MSDS
Canutec	Flammable	Oxidiser
Chronic	Footwear	Pictogram
Compressed	Fumehood	PPE
Cylinder	Gas	Product
Dangerously	Gloves	Reactive
Employee	Goggles	Risk
Expire	Identifier	WCB
Explosive	Label	WHMIS
Face Shield	Manage	Workplace

MSDS OF THE MONTH

PRODUCT: _____

DATE: _____

EMPLOYEE: _____

1) The product is classified as:

- | | |
|---|---------------------------------|
| A) compressed gas | D2) toxic causing other effects |
| B) flammable or combustible | D3) biohazardous infectious |
| C) oxidizer | E) corrosive |
| D1) toxic causing immediate serious effects | F) dangerously reactive |

2) This product is harmful by:

- a) inhalation b) skin absorption c) skin or eye contact d) ingestion

3) This product's toxic or suspected toxic effects include:

- | | |
|-------------------|-------------------|
| A) irritant | F) frostbite |
| B) sensitizer | G) CNS depressant |
| C) carcinogen | H) dermatitis |
| D) mutagen | I) asphyxiant |
| E) skin degreaser | J) narcotic |
| K) other: _____ | |

4) Preventive clothing and/or equipment include:

- | | |
|-------------------|-------------------|
| A) lab coat | E) rubber apron |
| B) latex gloves | F) fume hood |
| C) safety goggles | G) nitrile gloves |
| D) face shield | H) face mask |
| I) other: _____ | |

5) Storage recommendations include:

- | | |
|--|-------------------------------------|
| A) cool, dry well ventilated area | G) freeze |
| B) away from sources of ignition | H) do not evaporate |
| C) away from combustible material | I) under inert gas such as nitrogen |
| D) keep out of direct sunlight or heat
fridge | J) refrigerate in explosion proof |
| E) refrigerate | K) in corrosion resistant cabinet |
| F) away from moisture or water | |
| L) other: _____ | |

6) Incompatible substances include:

- | | |
|----------|----------|
| a) _____ | d) _____ |
| b) _____ | e) _____ |
| c) _____ | f) _____ |

7) If you accidentally splashed this product in your eyes or on your skin, you would:

