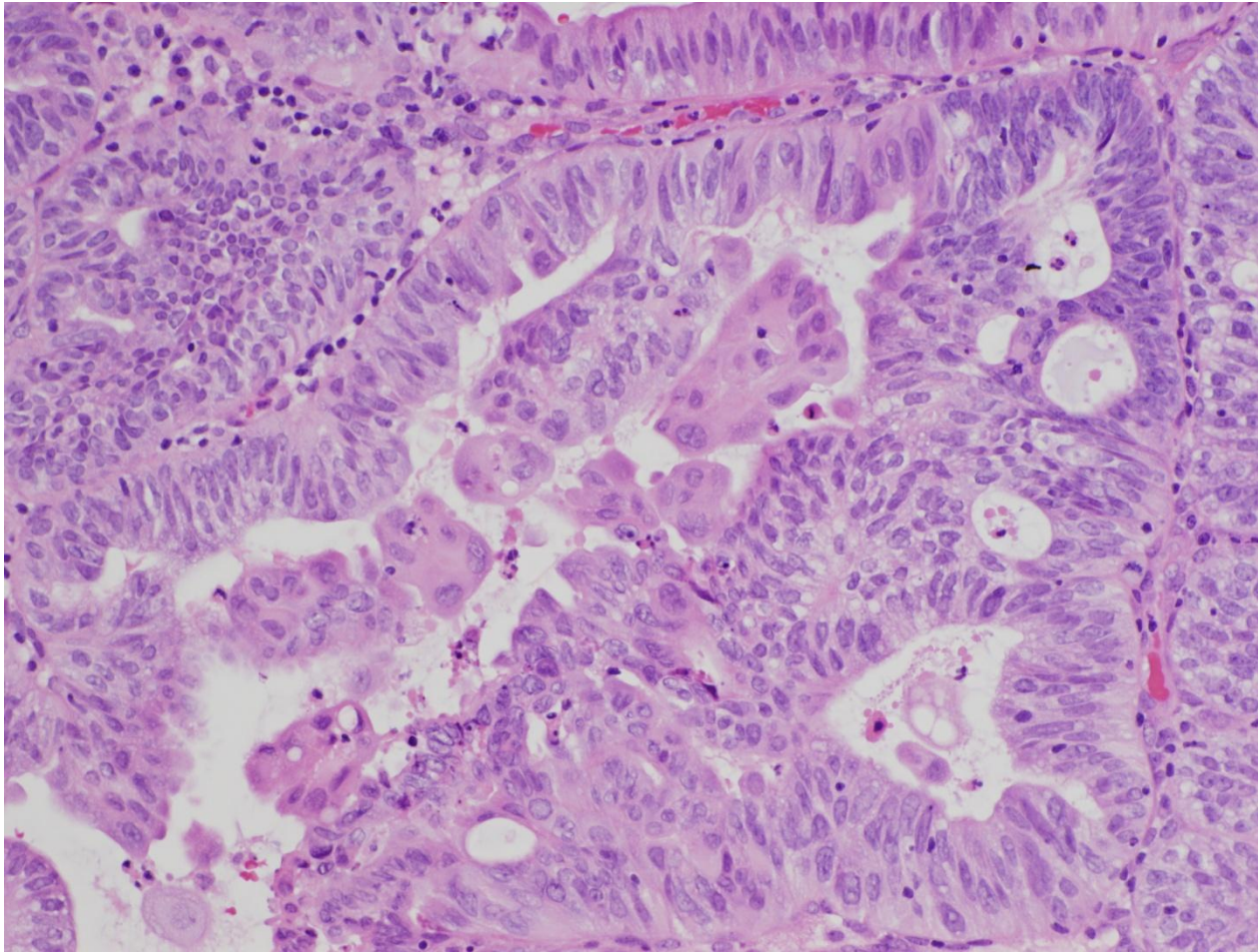


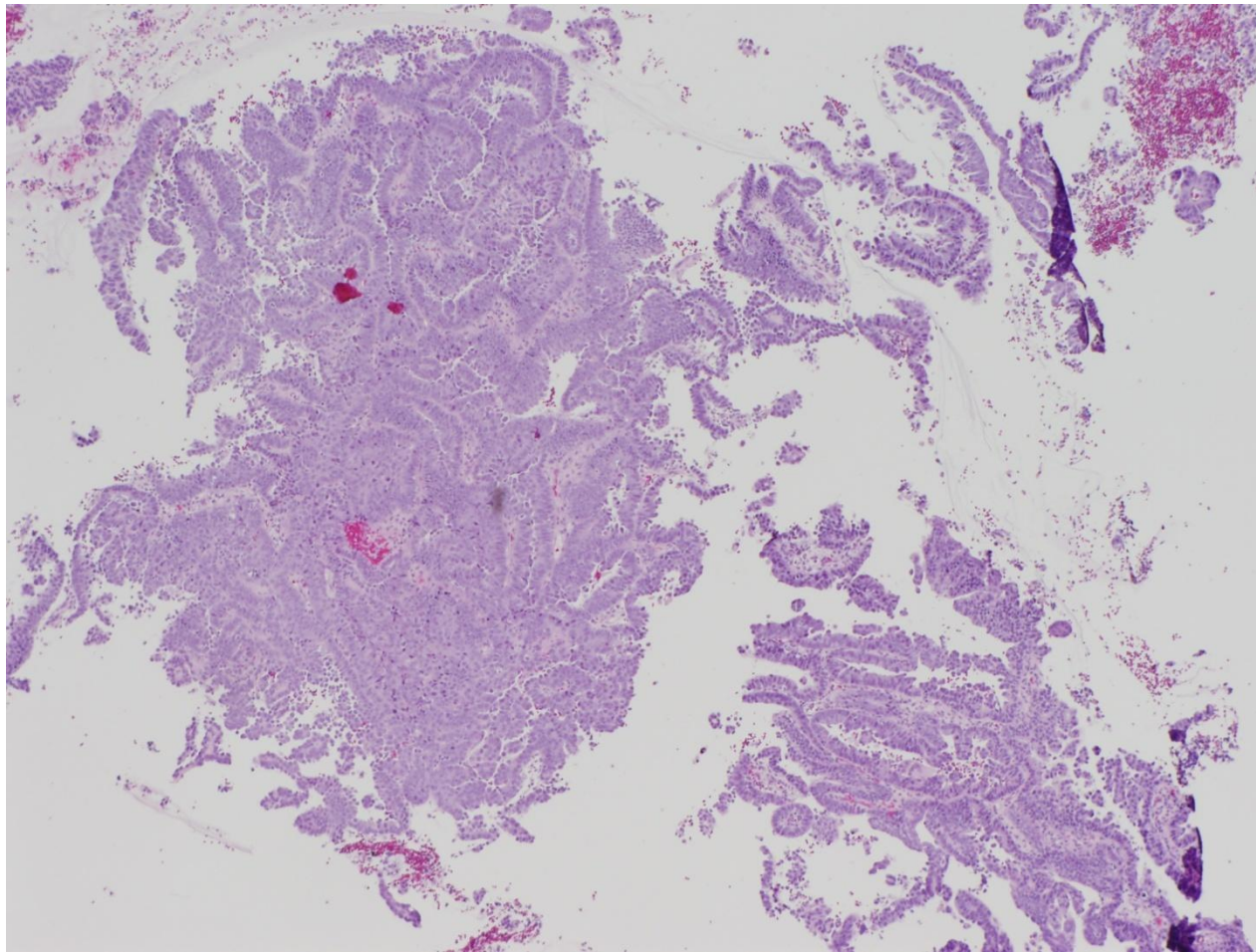
EEC with SNVP



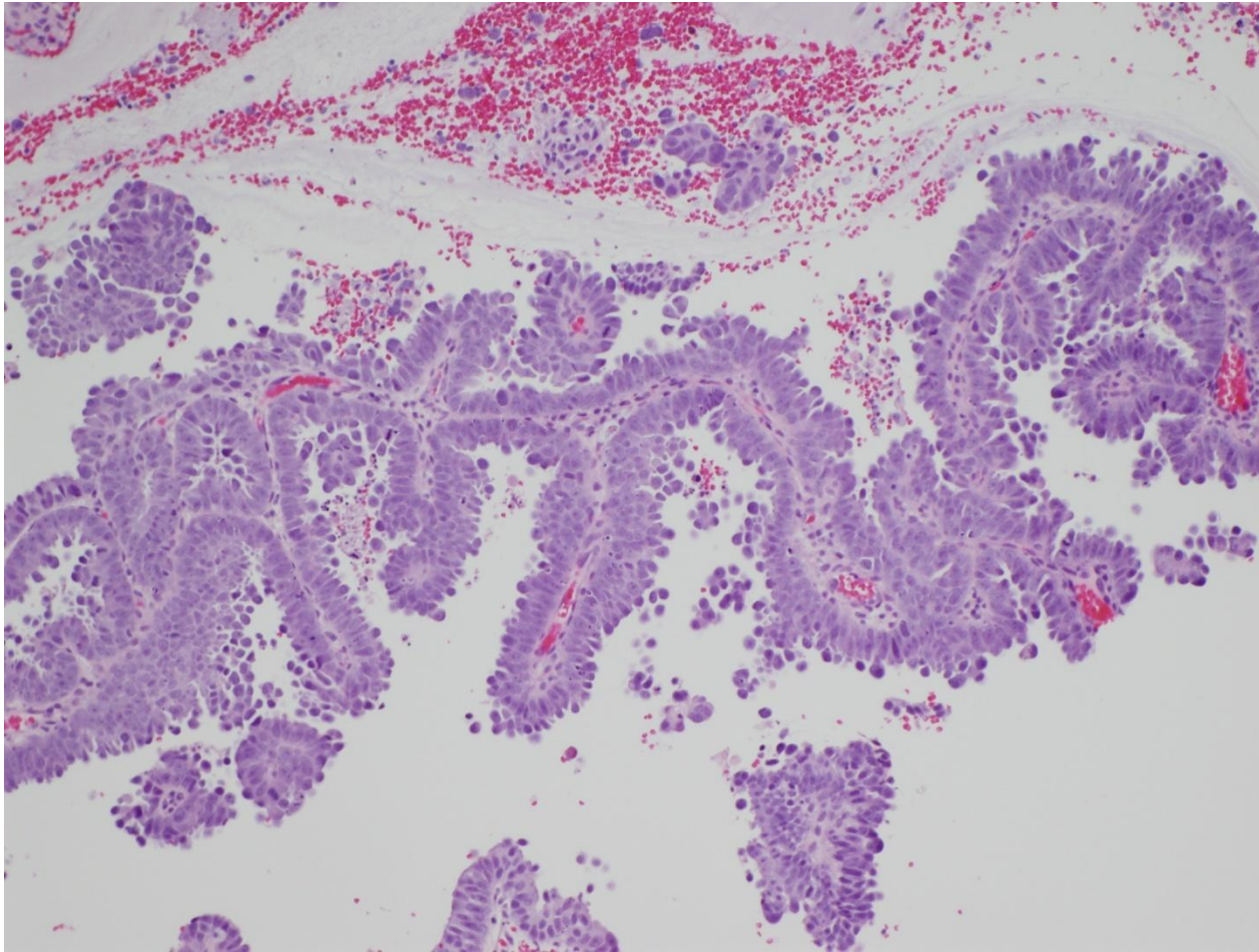
Uterine Serous Carcinoma

- 10% of endometrial carcinomas
- Patients ~ 10 yrs older than typical EEC
- Extrauterine spread common at presentation
 - Including non-myoinvasive tumors
- TP53 mutations
- Background atrophy, assoc. with polyps, EIC
- Complex papillary pattern, slit-like glands
- Diffuse high grade cytologic atypia

Uterine Serous Carcinoma

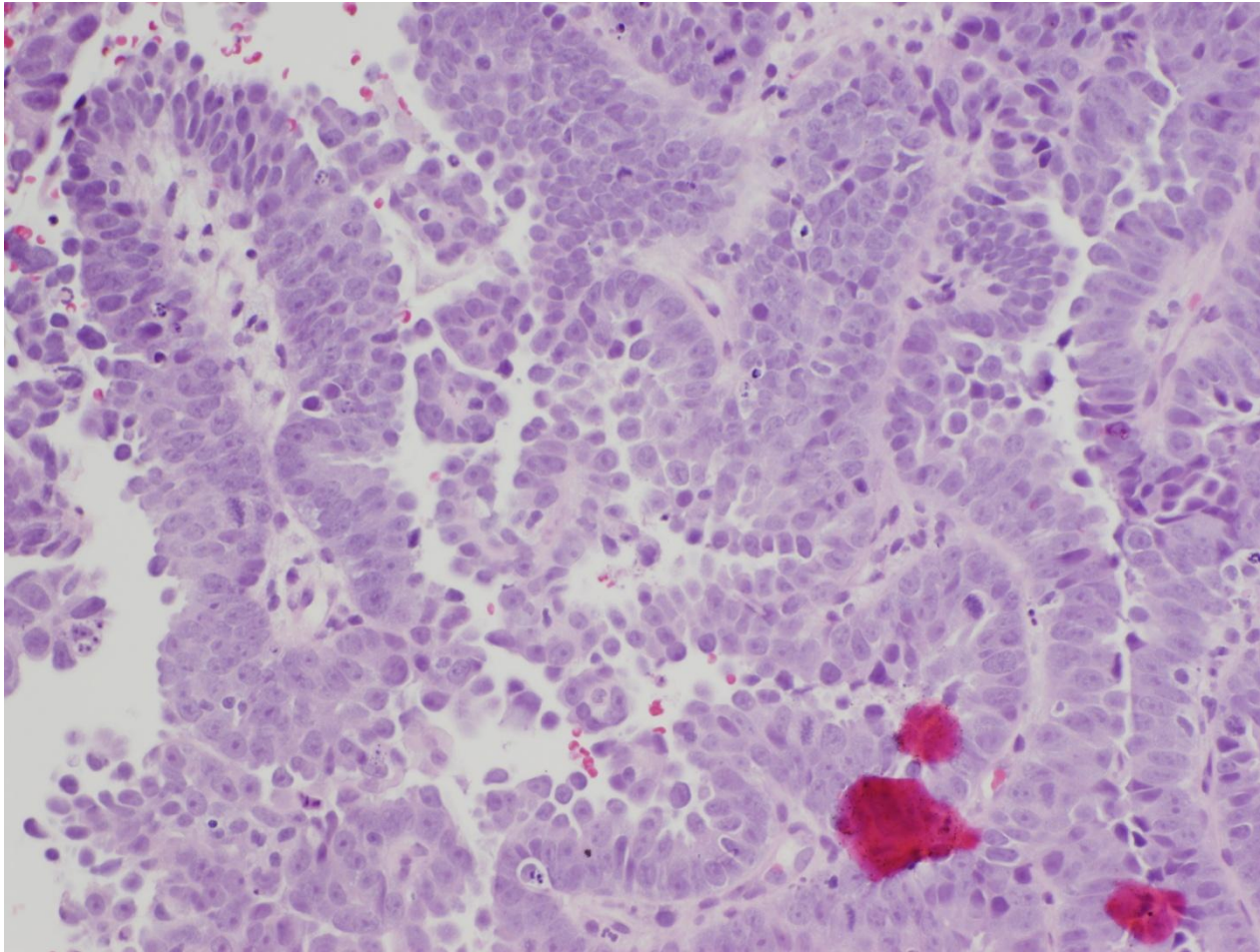


Uterine Serous Carcinoma



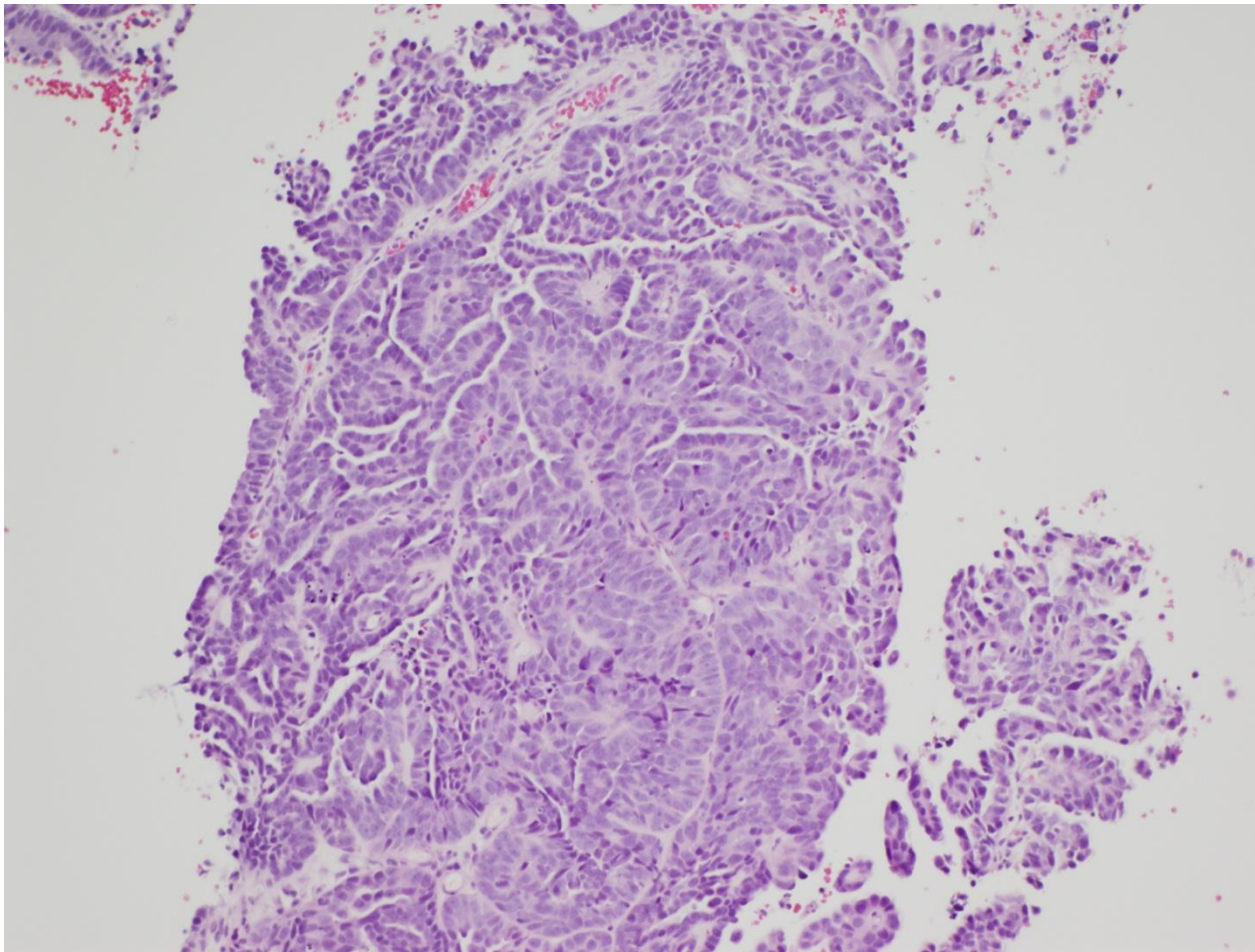
Stratified epithelial cells, cellular buds, single cell exfoliation

Uterine Serous Carcinoma



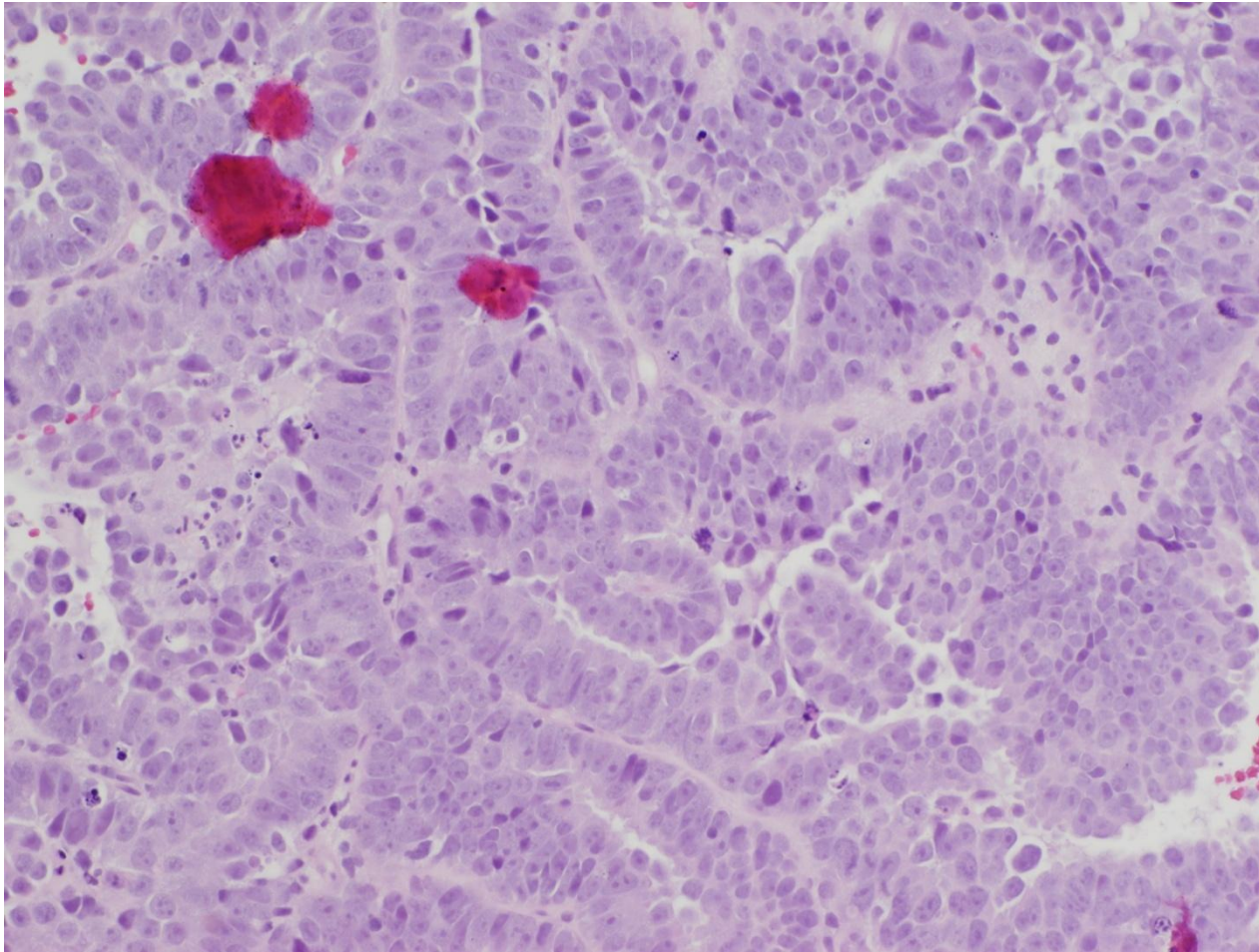
Stratified epithelial cells, cellular buds, single cell exfoliation

Uterine Serous Carcinoma



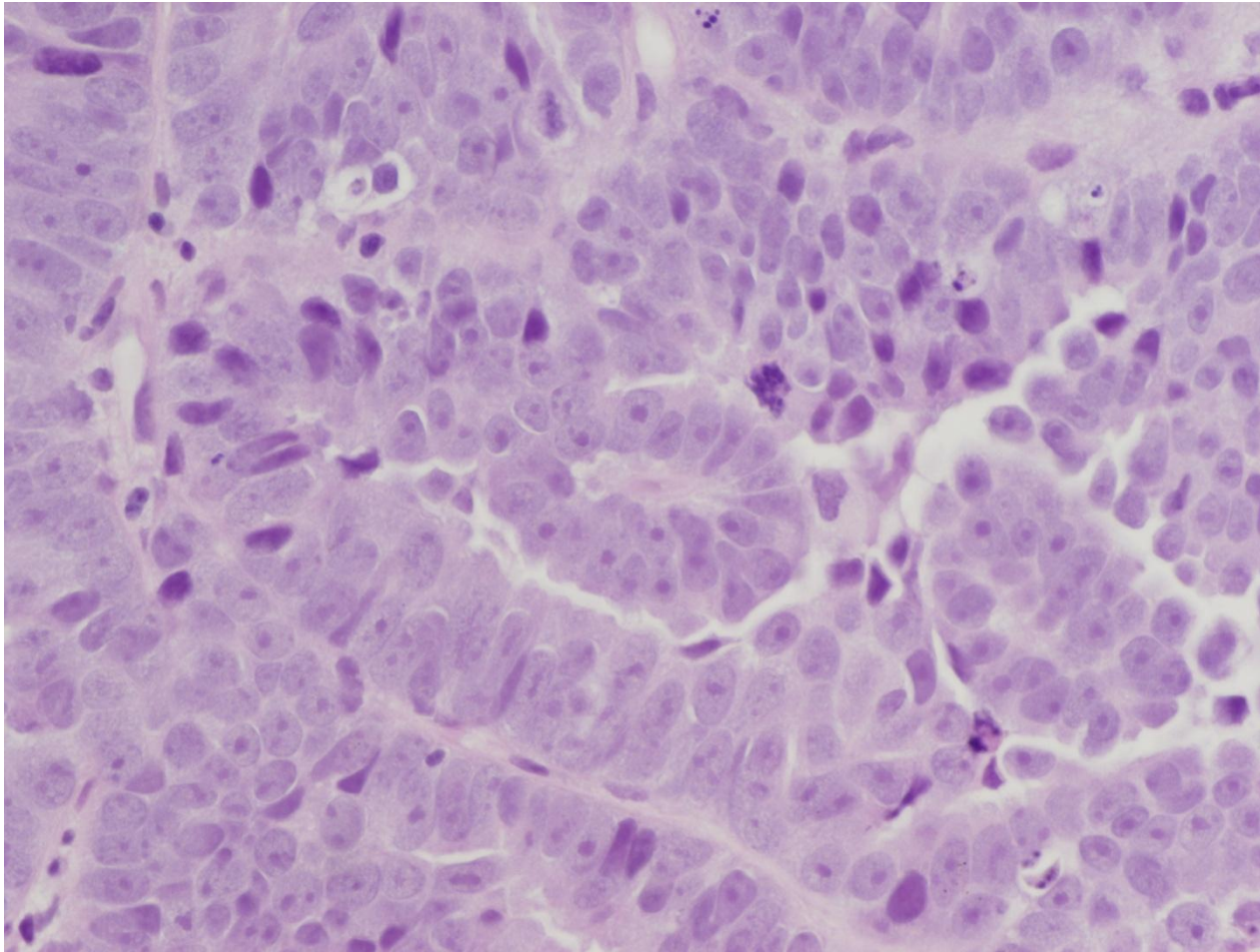
Slit-like gland spaces with serrated luminal profiles

Uterine Serous Carcinoma



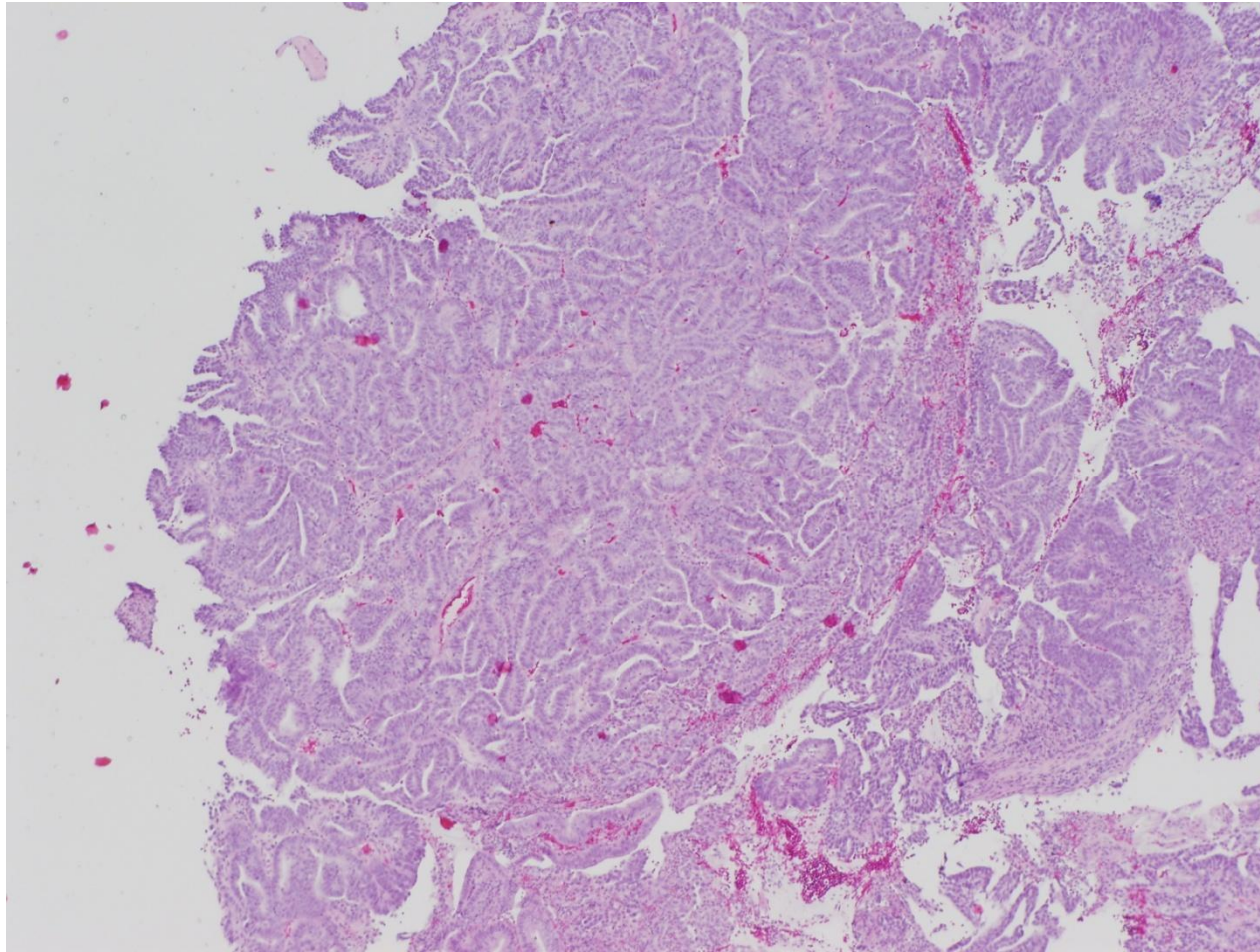
Complex glandular pattern

Uterine Serous Carcinoma

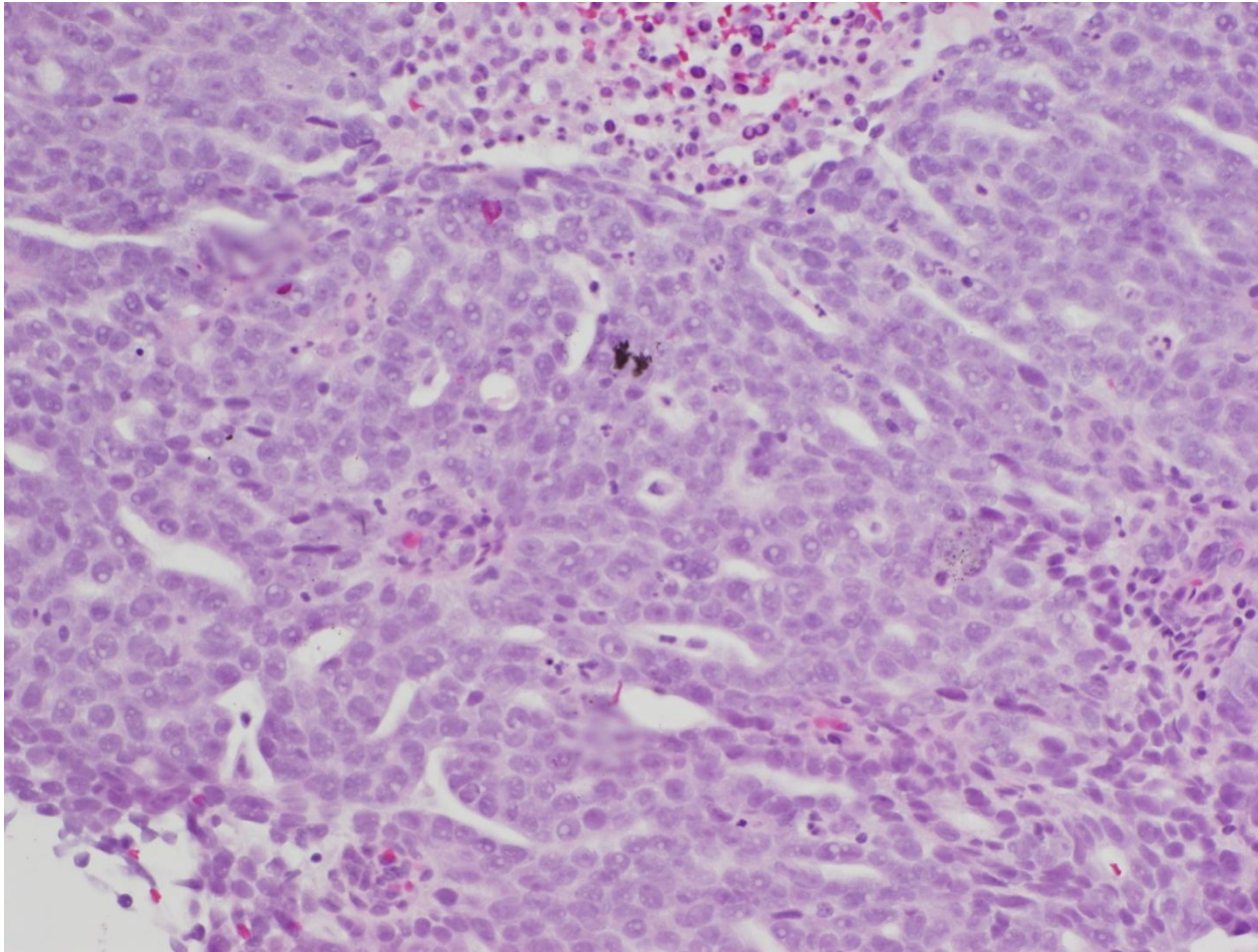


High grade atypia (with prominent nucleoli), frequent mits

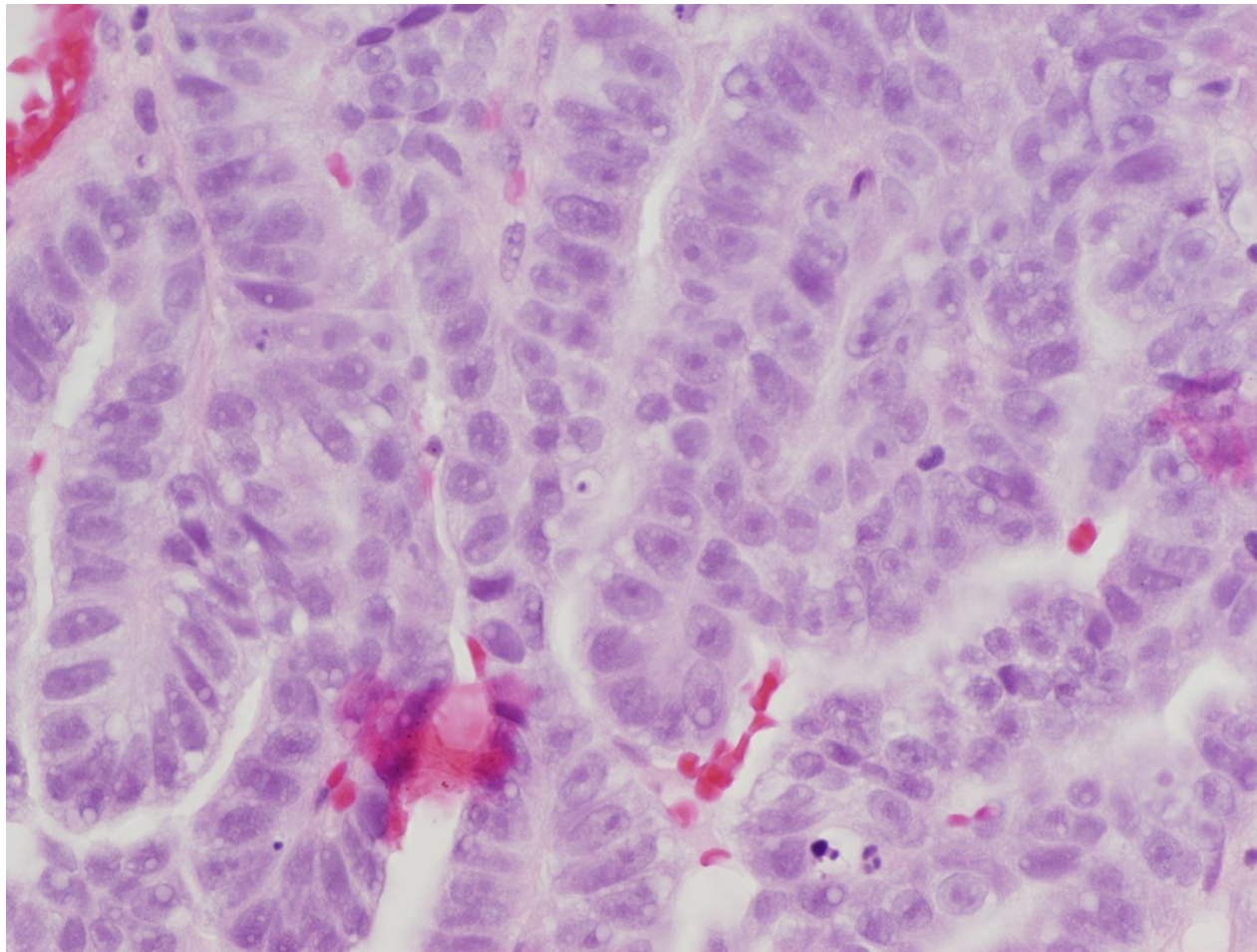
Endometrial biopsy



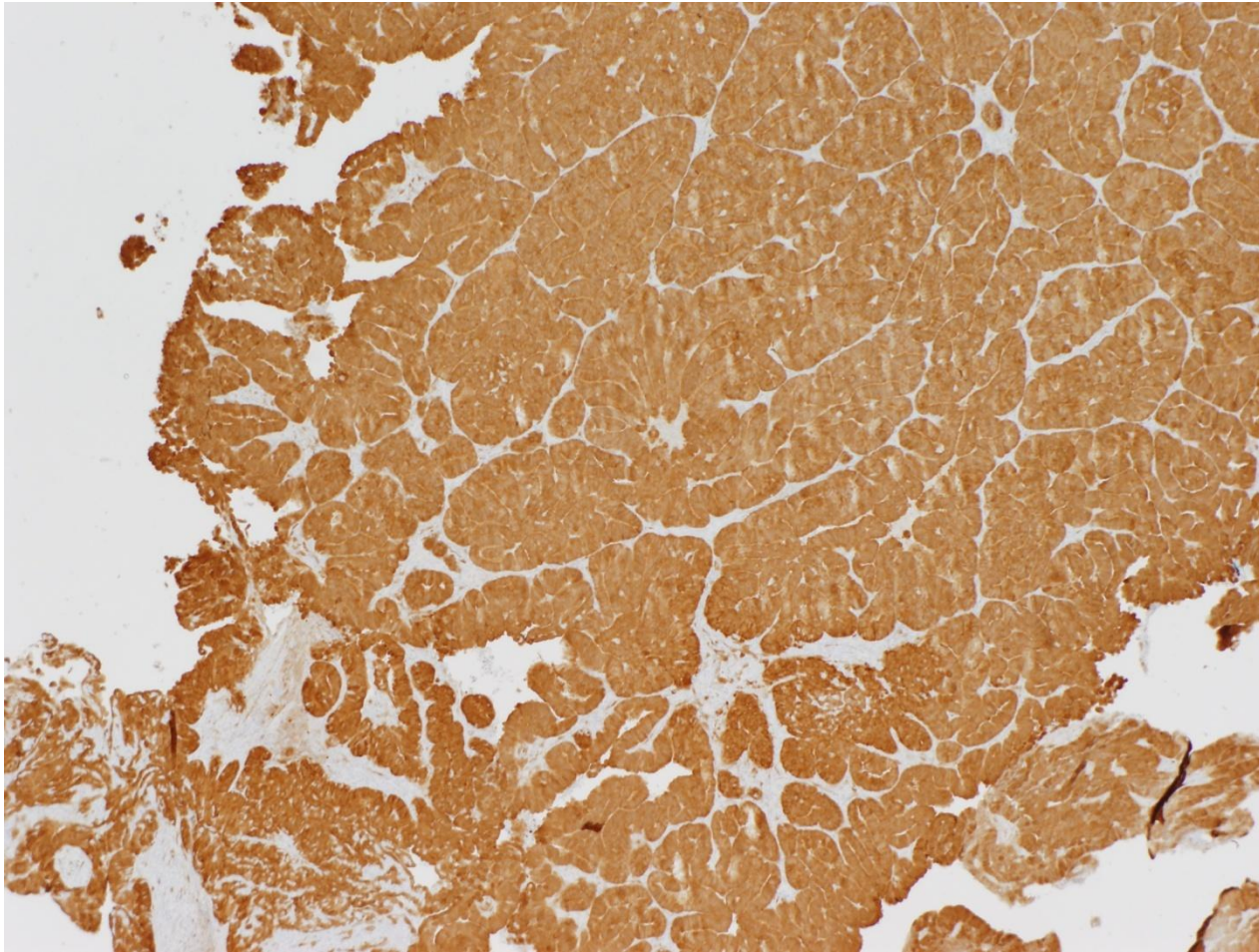
Endometrial biopsy



Endometrial biopsy

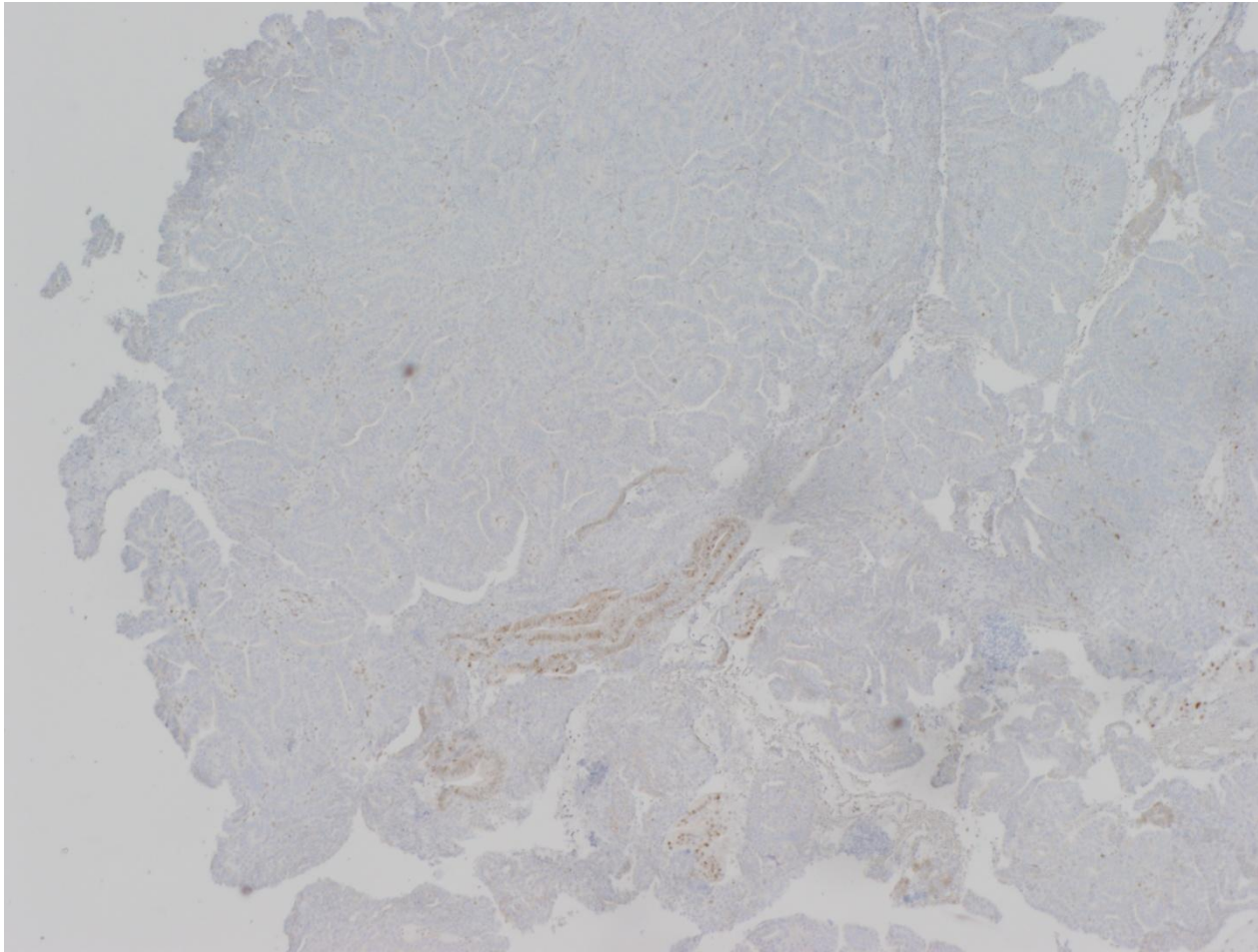


Endometrial biopsy



p16

Endometrial biopsy

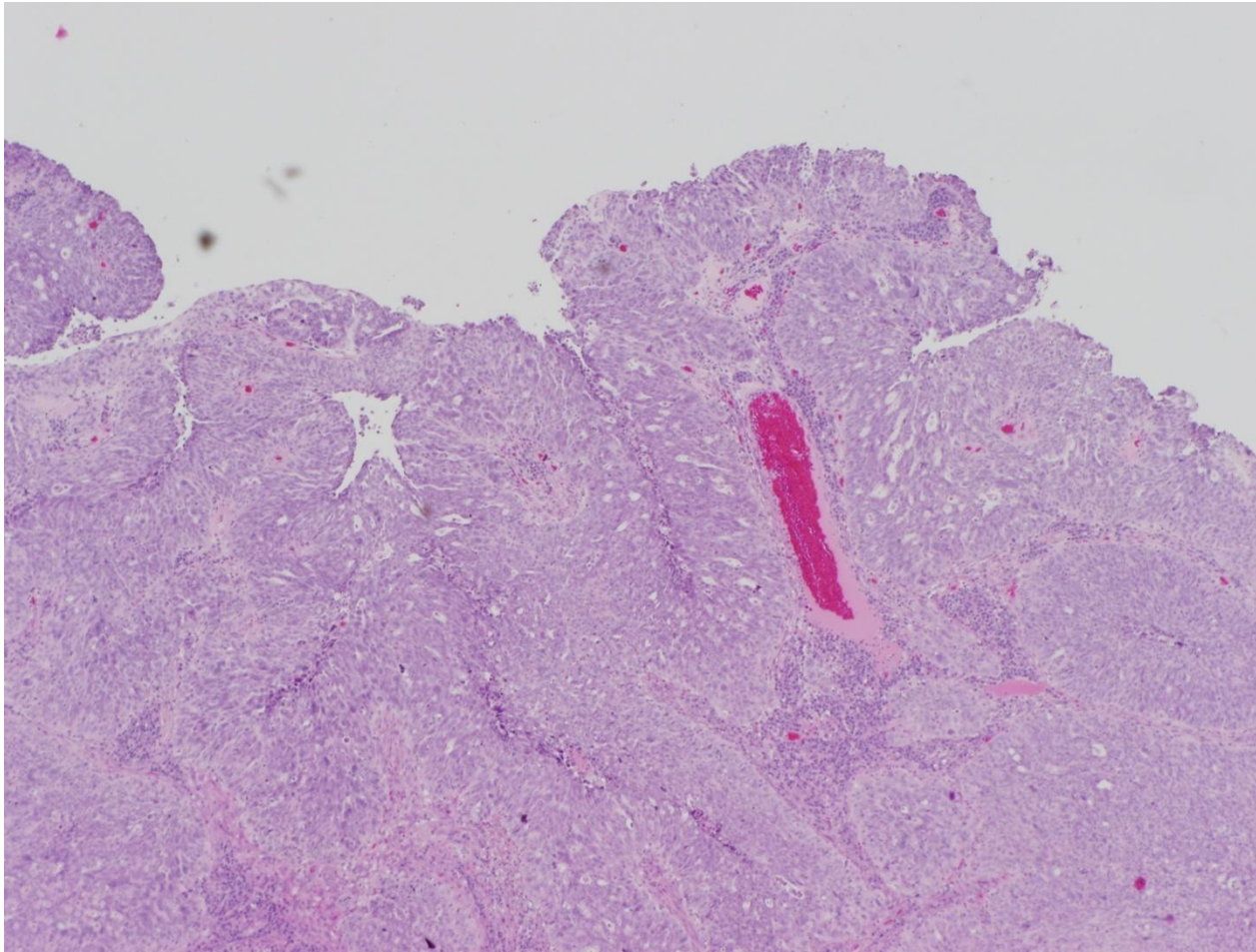


Dx: c/w (endometrioid-like) USC

p53

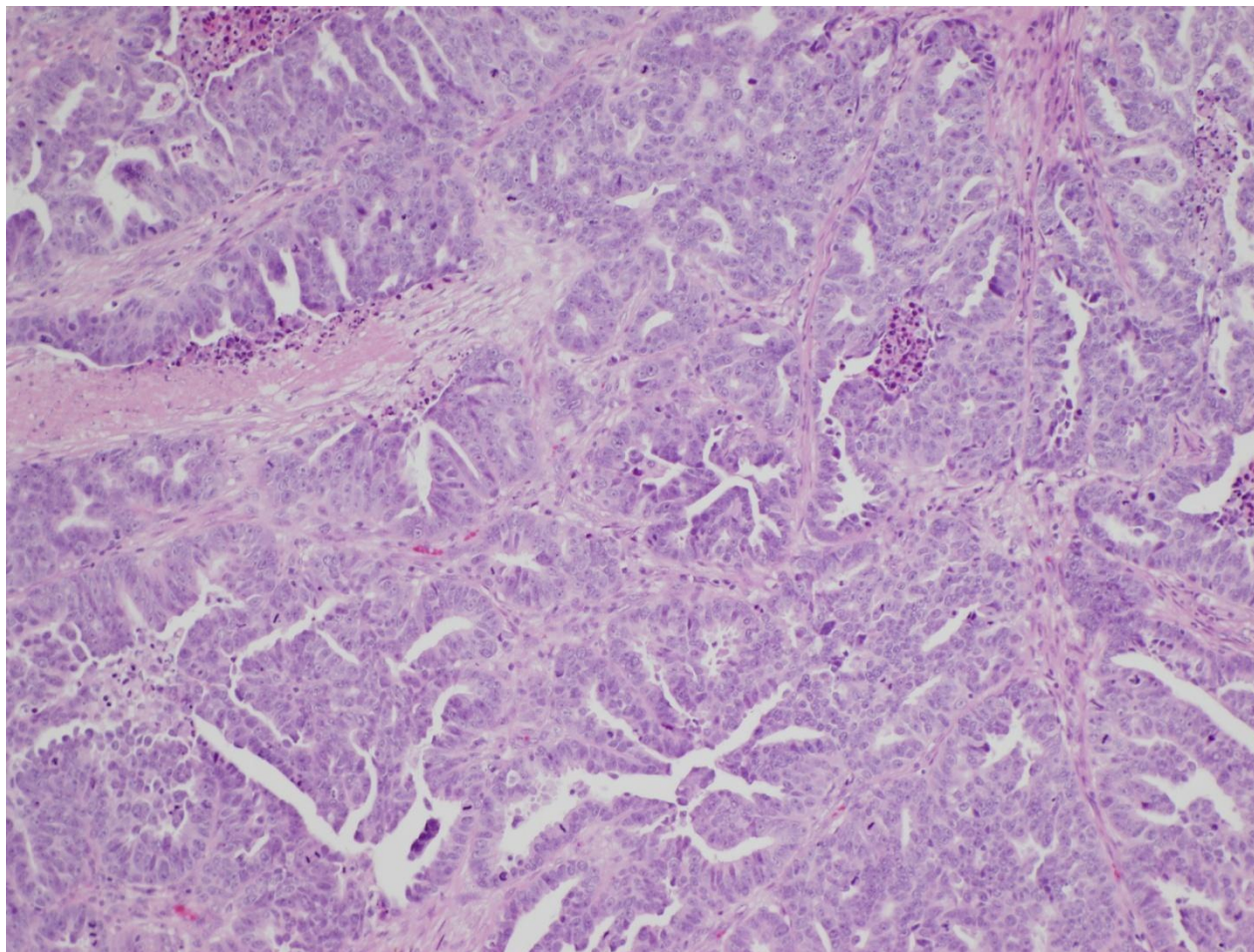
Endometrioid-like USC

* Corresponding hysterectomy



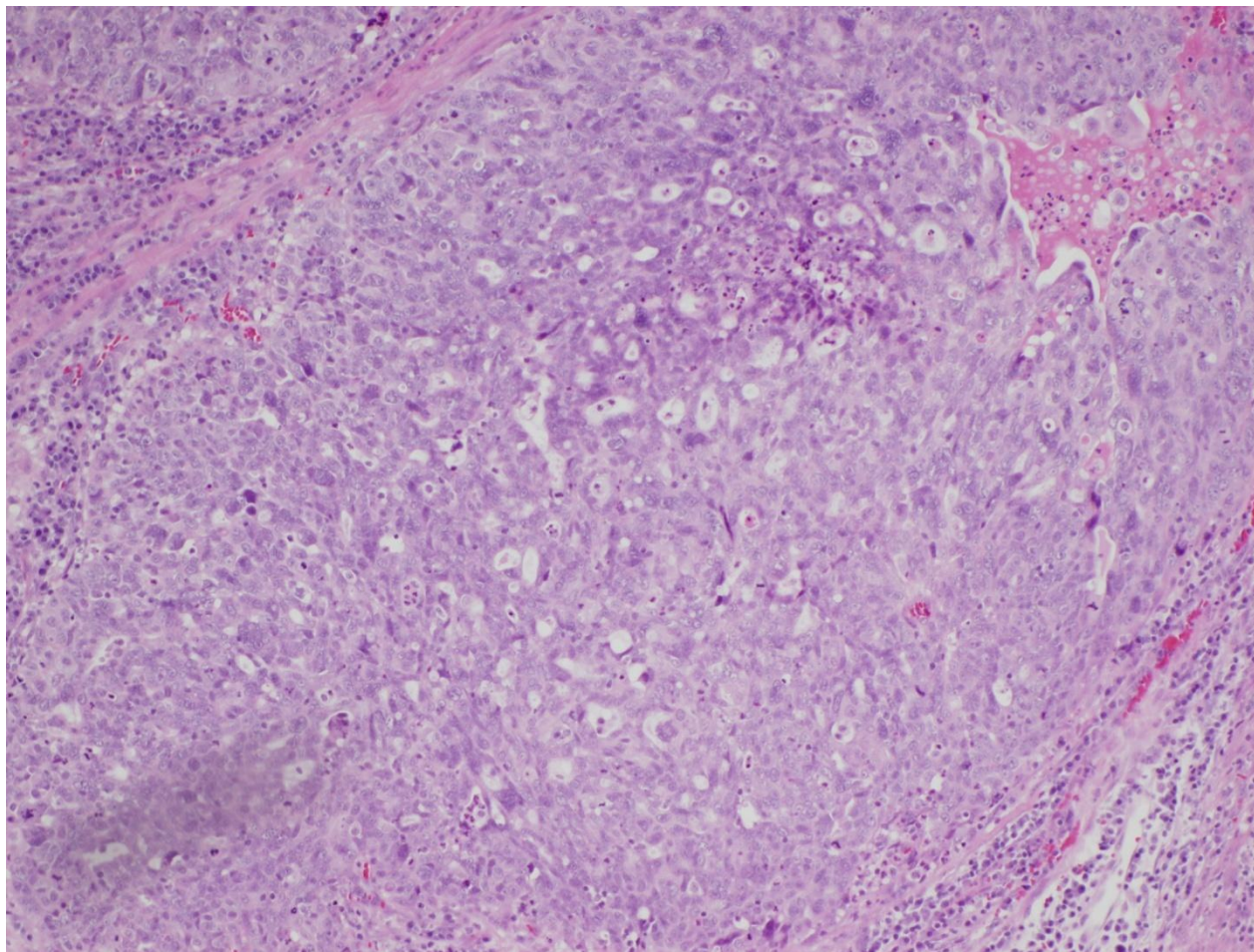
Tubular predominate

Endometrioid-like USC



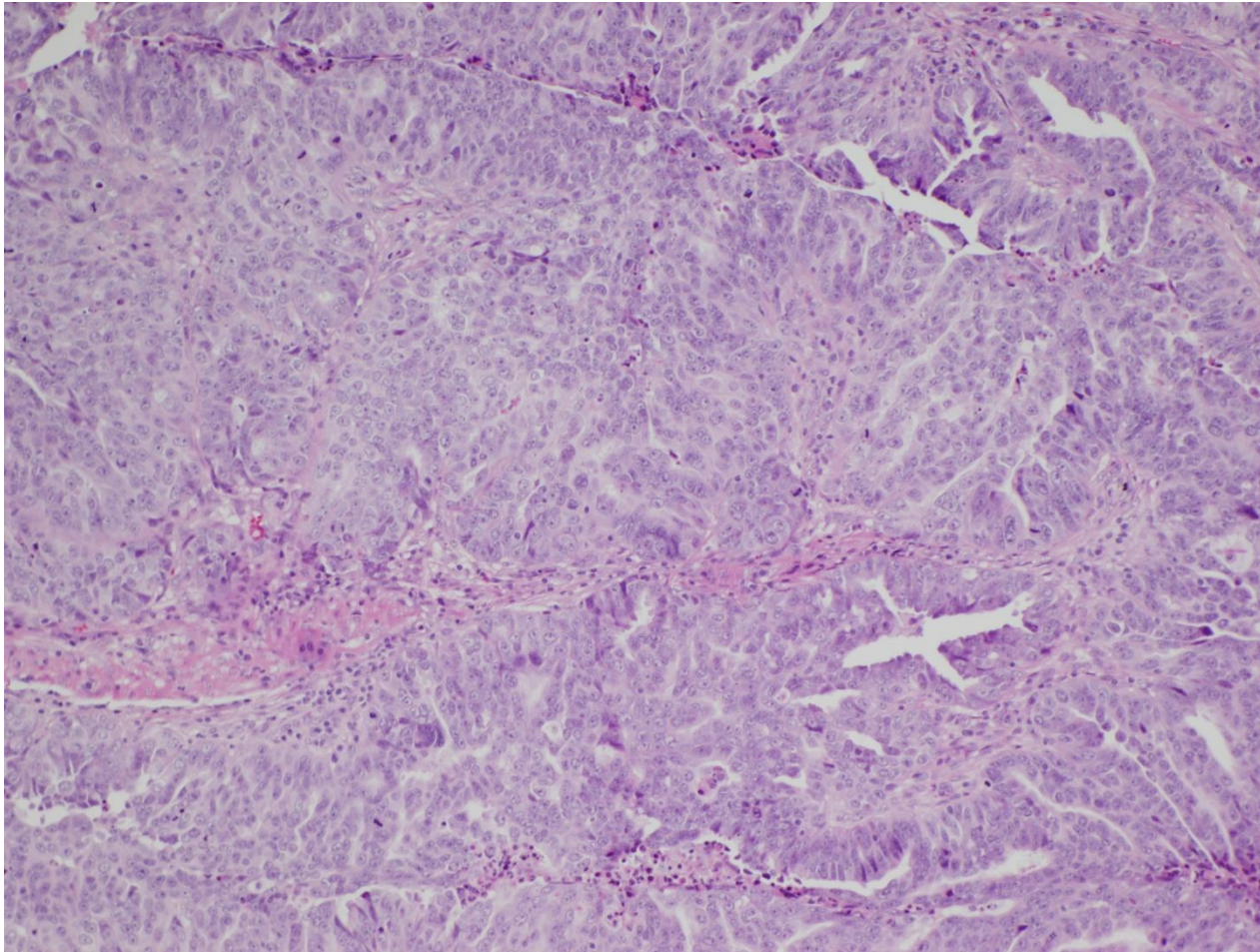
Complex glandular pattern

Endometrioid-like USC



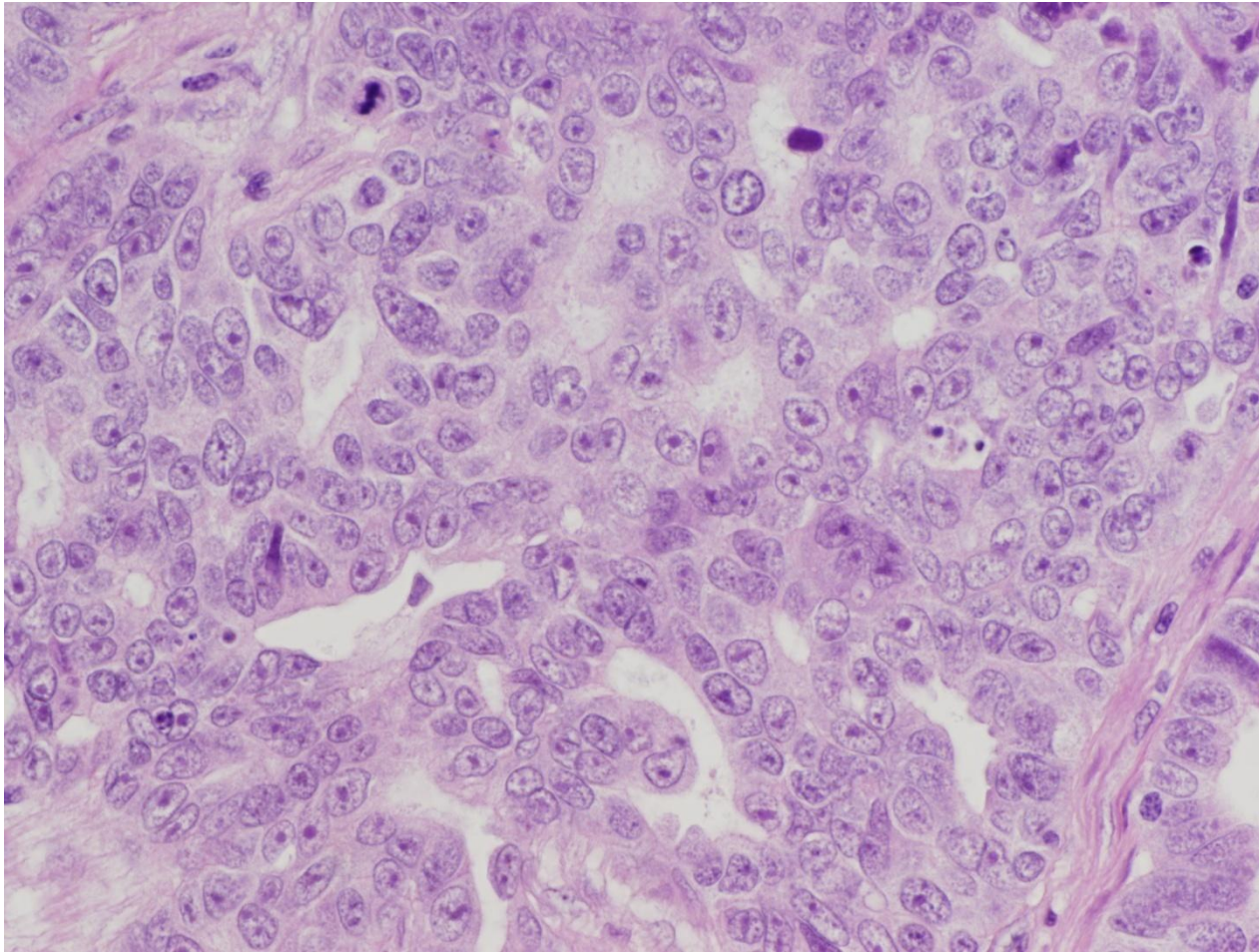
Cribriform pattern

Endometrioid-like USC



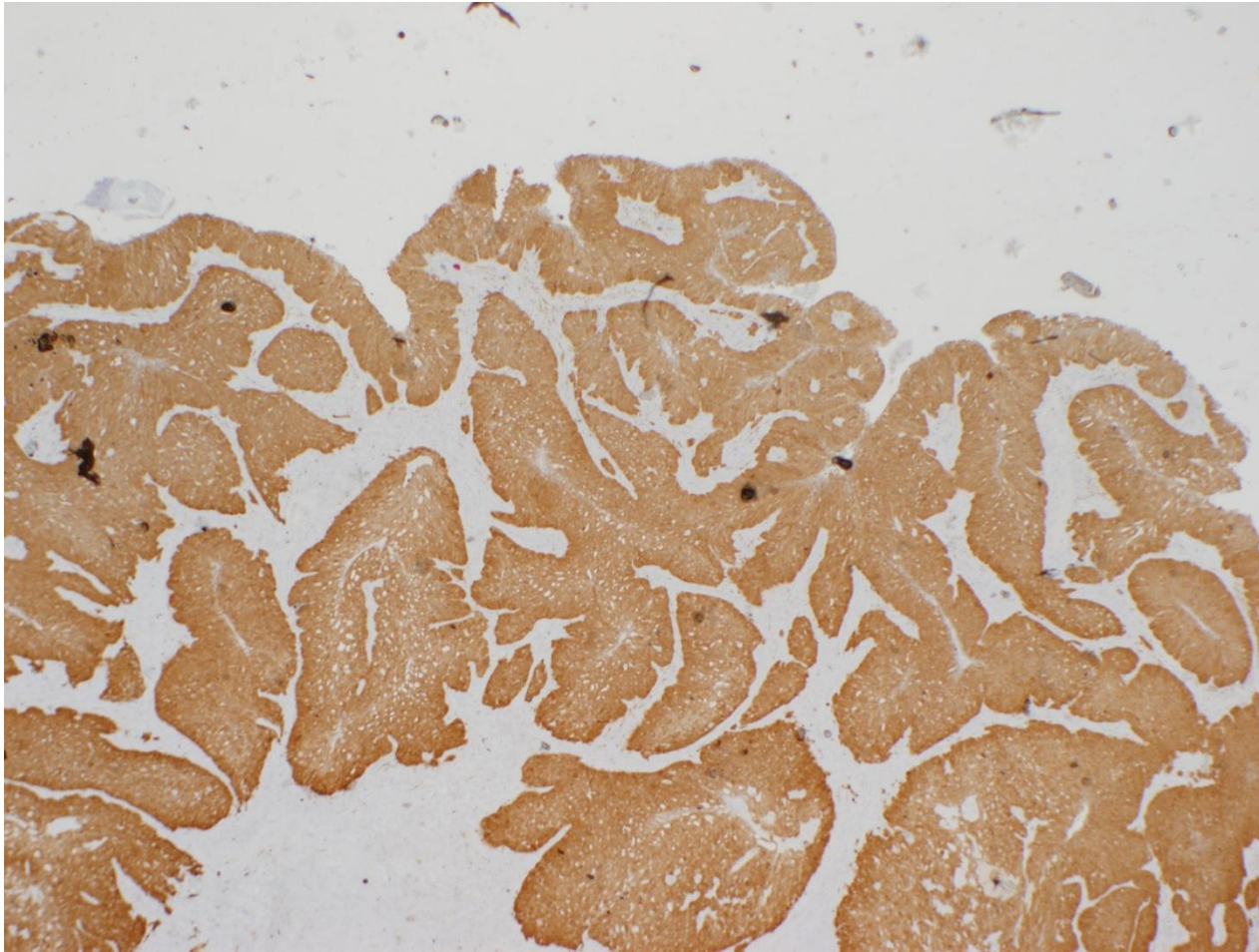
Solid zones, mimicking HG EEC

Endometrioid-like USC



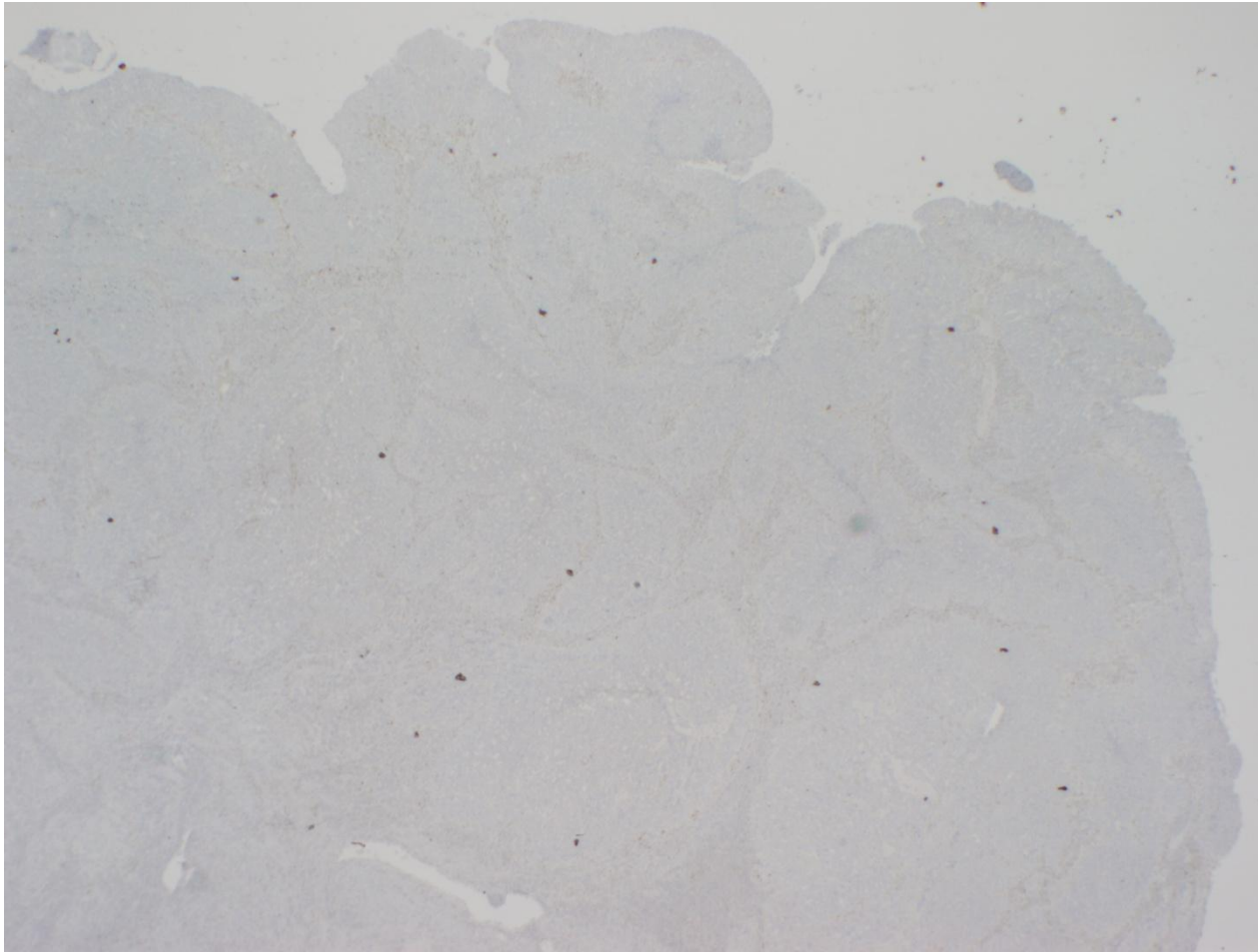
High grade atypia

Endometrioid-like USC



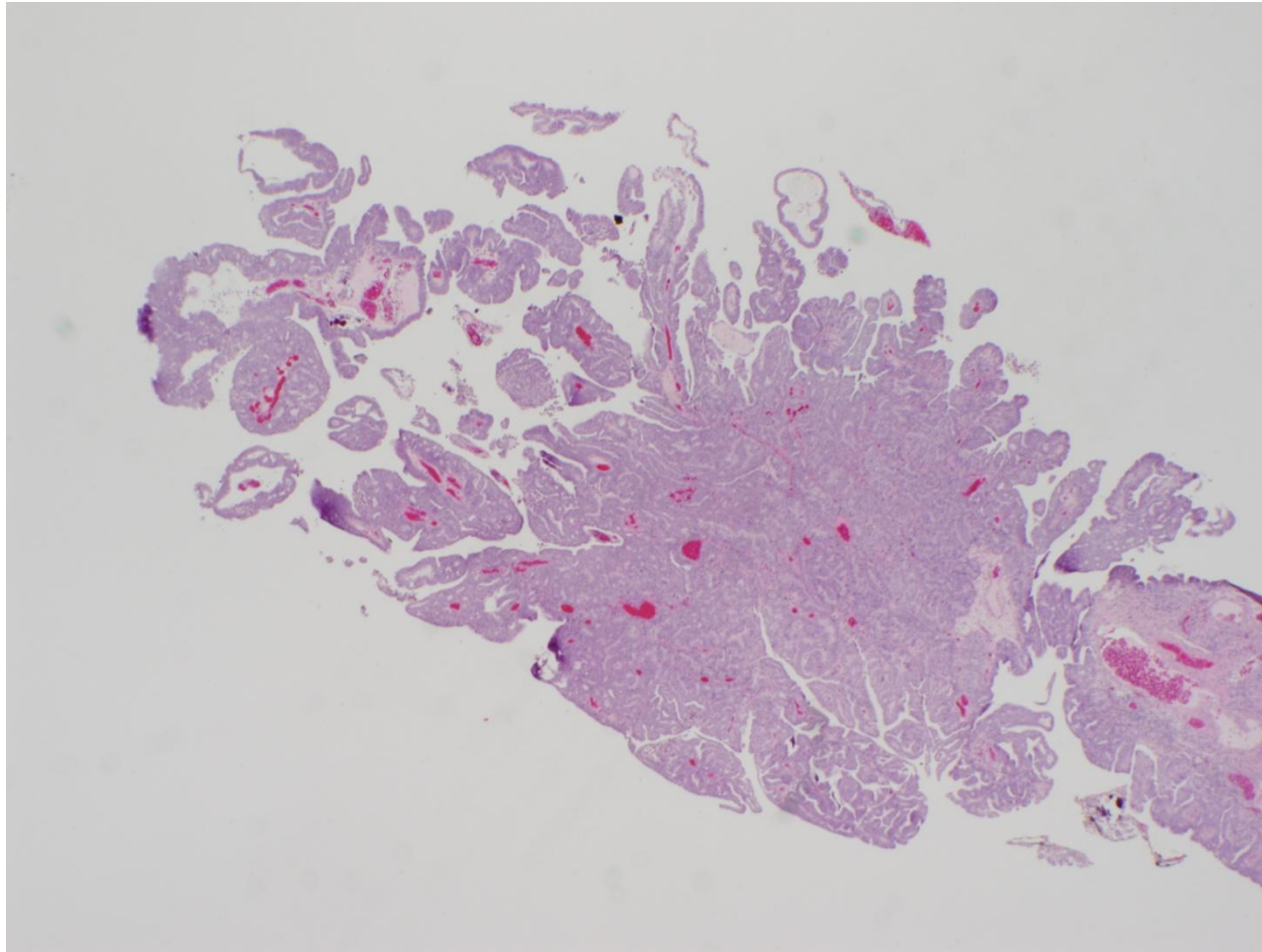
p16

Endometrioid-like USC



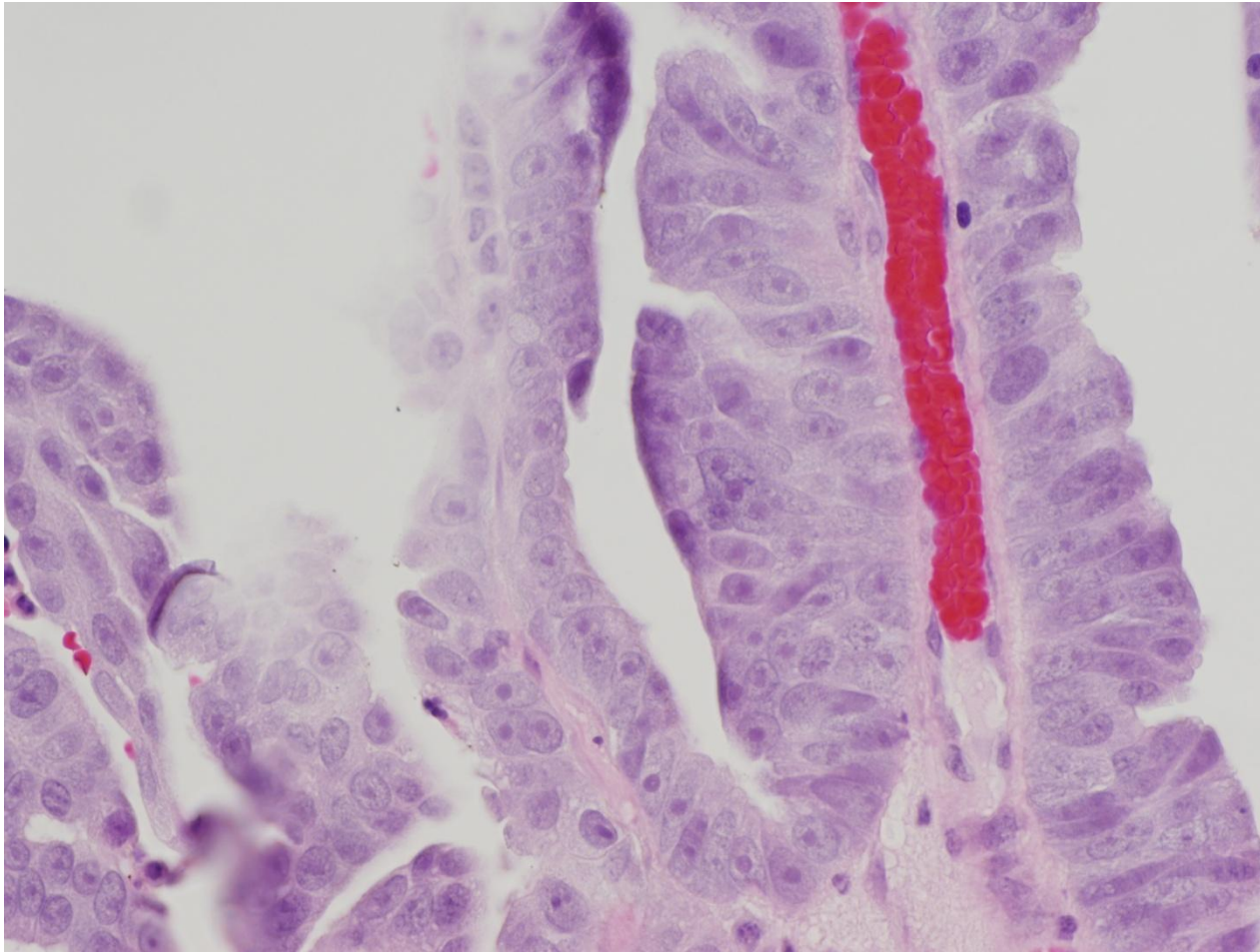
p53

Endometrioid-like USC



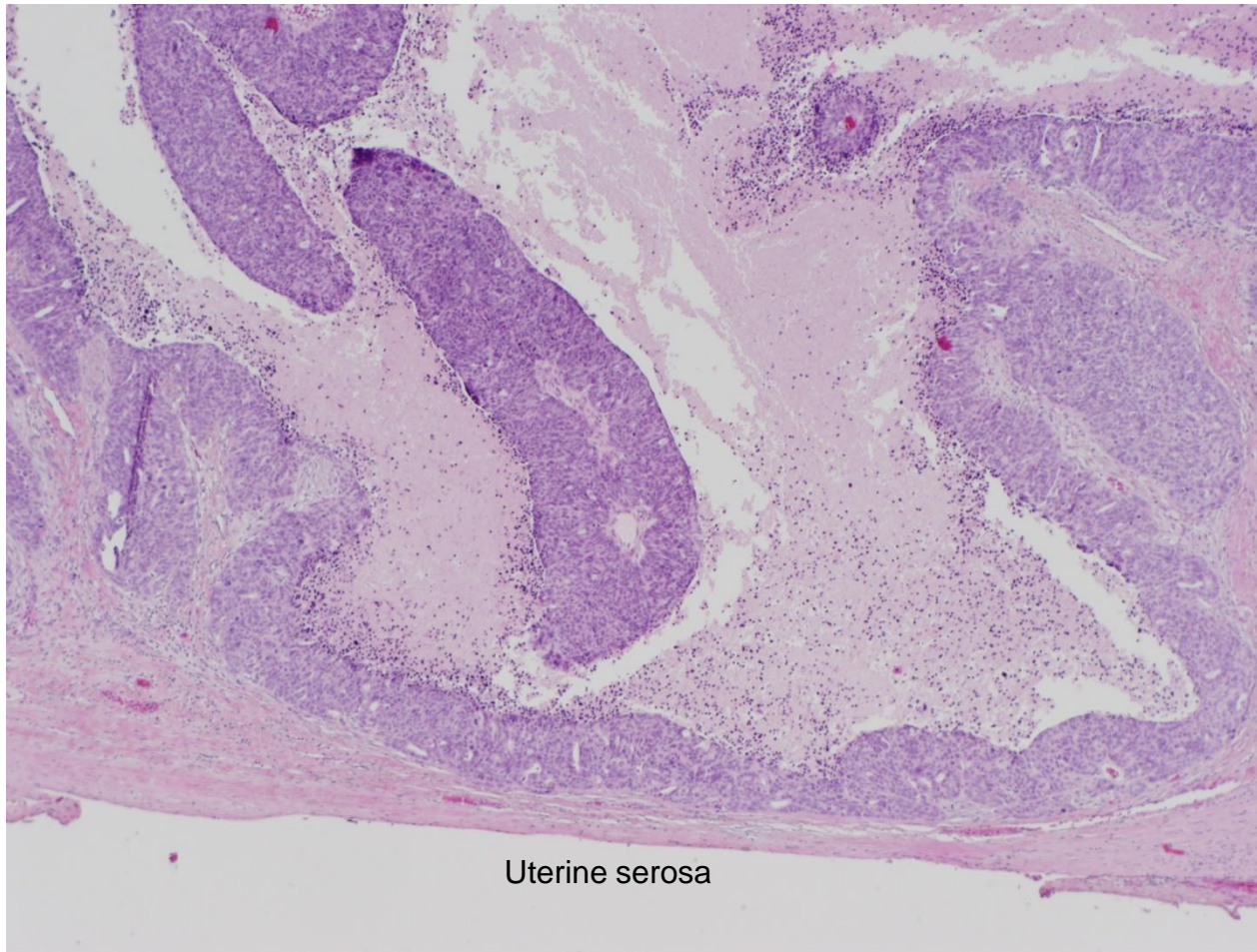
Conventional papillae

Endometrioid-like USC



Papillae with HG atypia

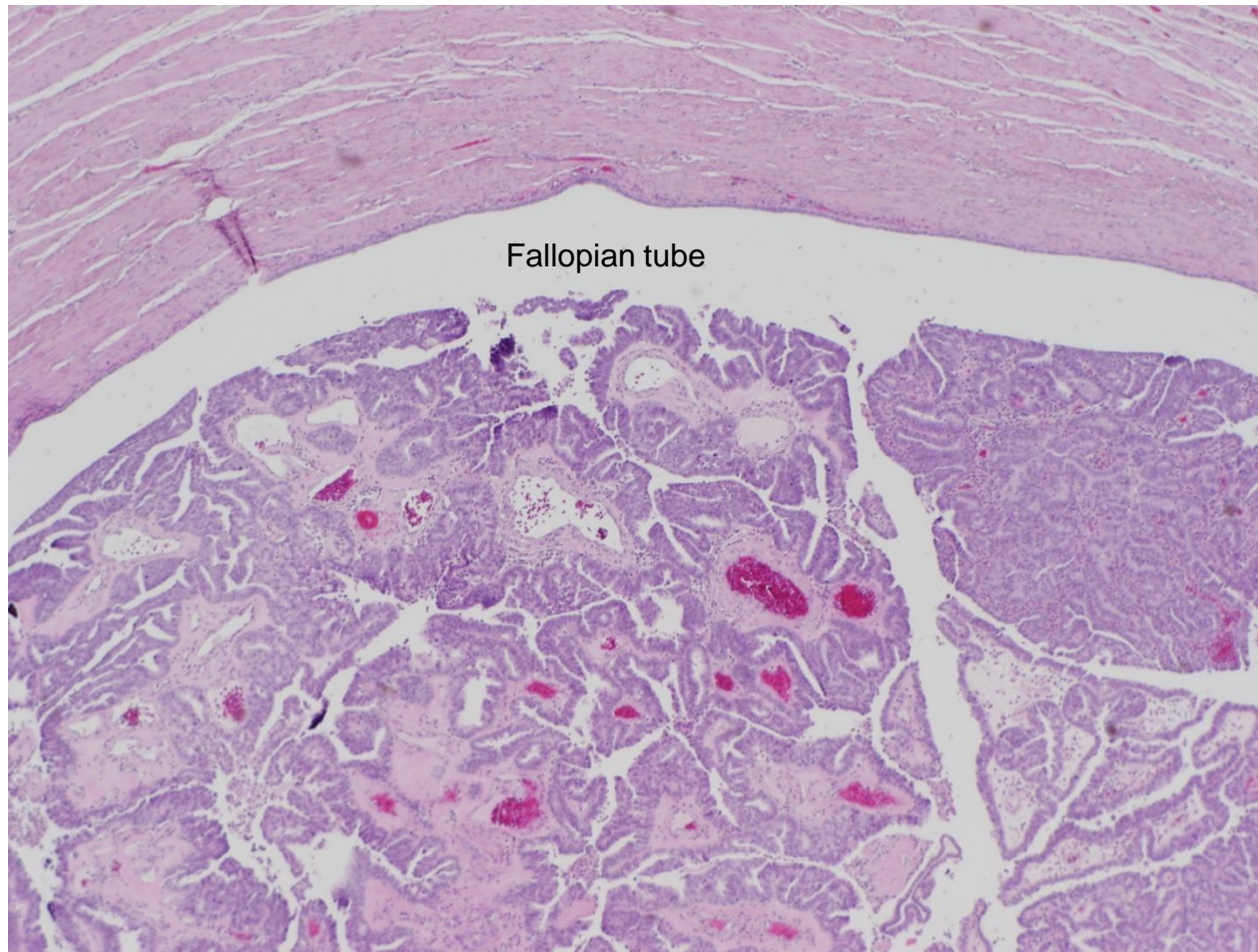
Endometrioid-like USC



Uterine serosa

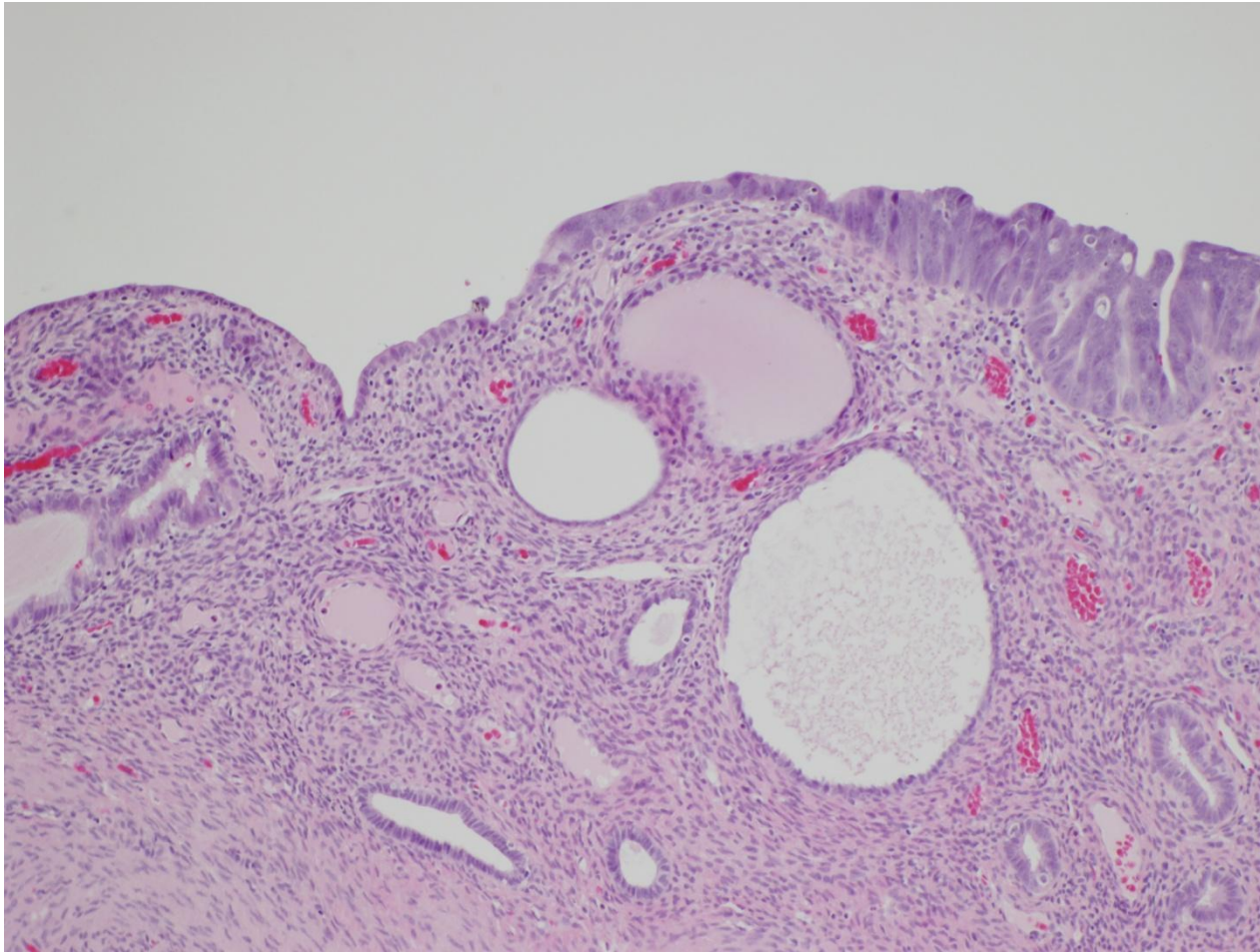
Deep myoinvasion

Endometrioid-like USC



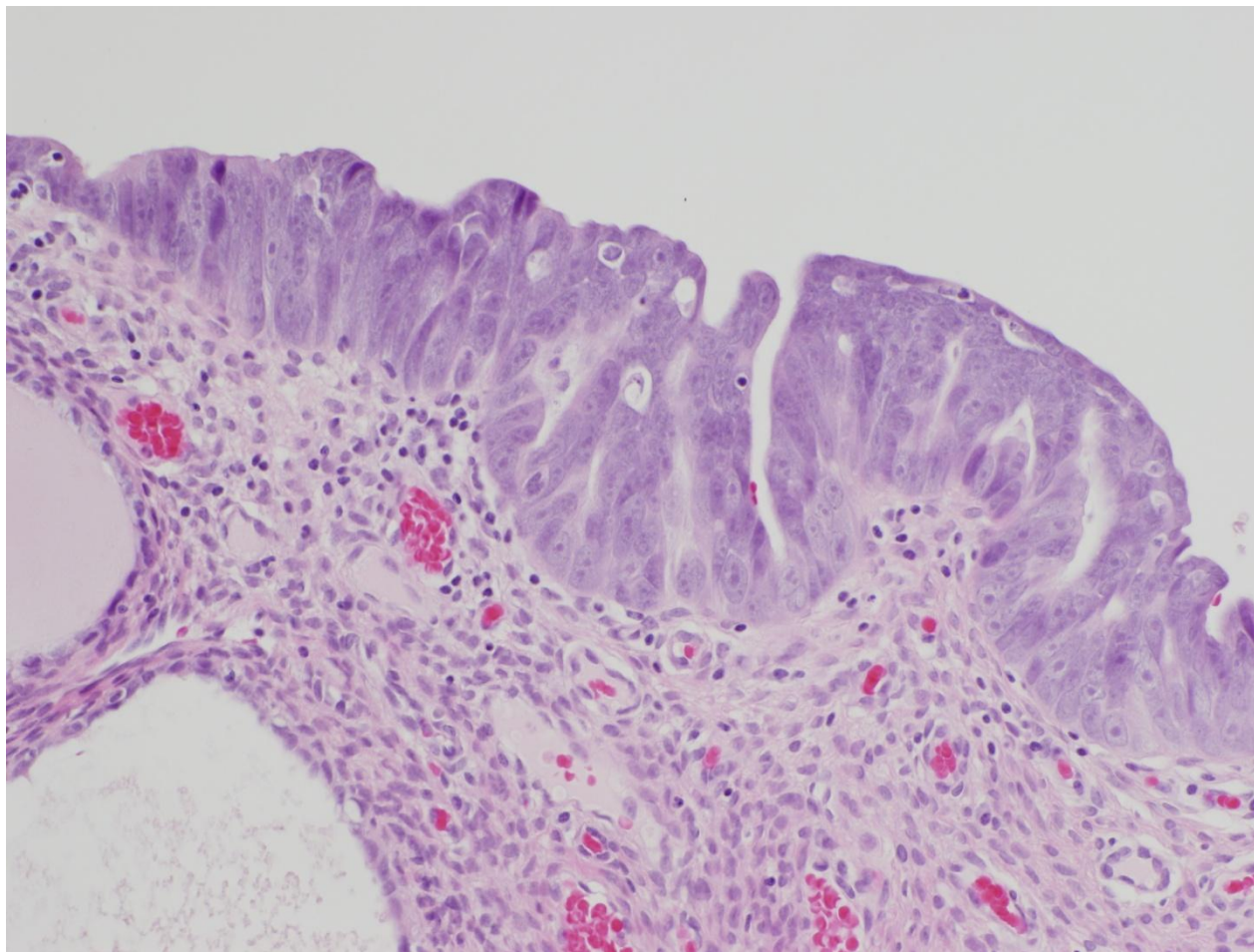
Tube involved (high stage)

Endometrioid-like USC



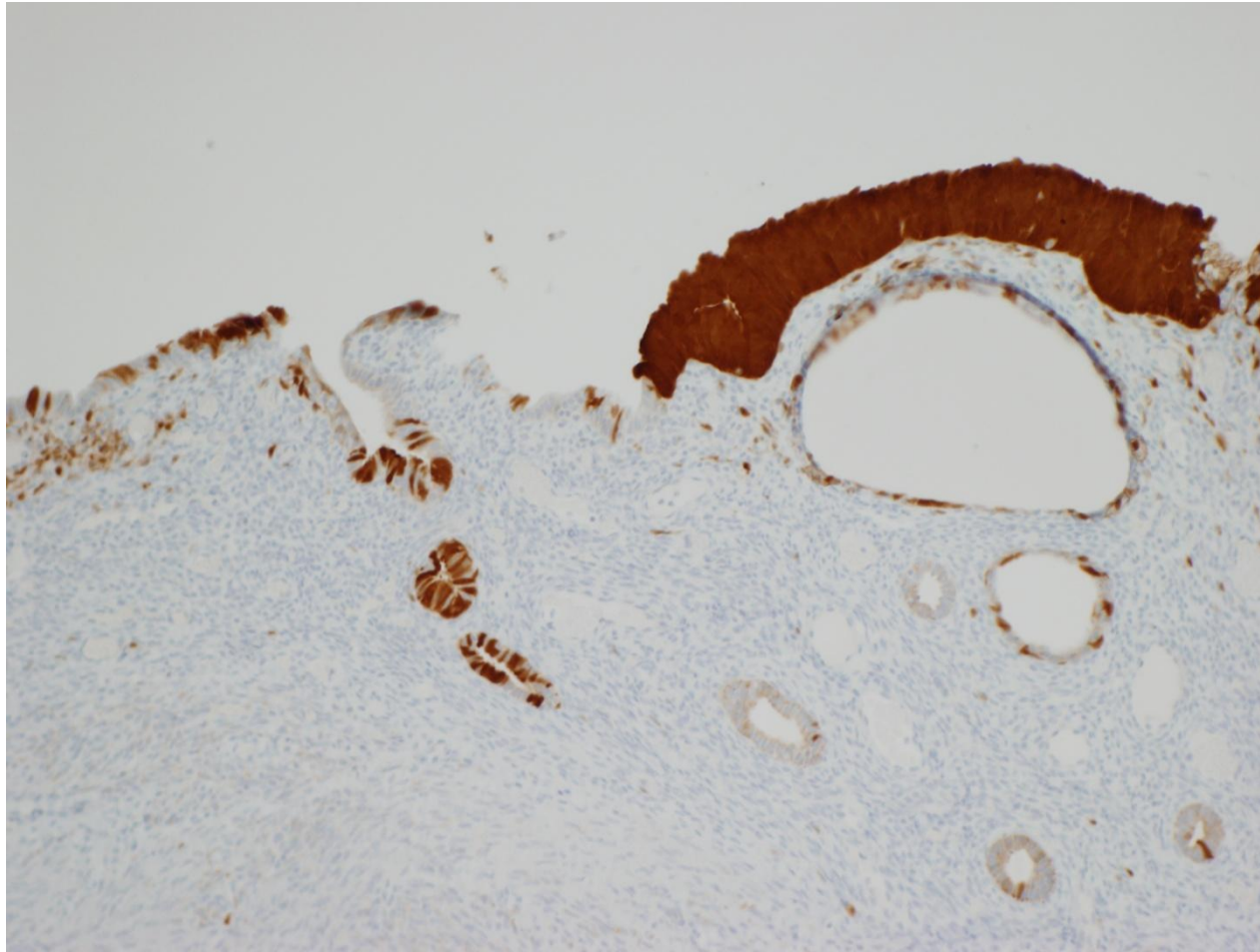
EIC

Endometrioid-like USC



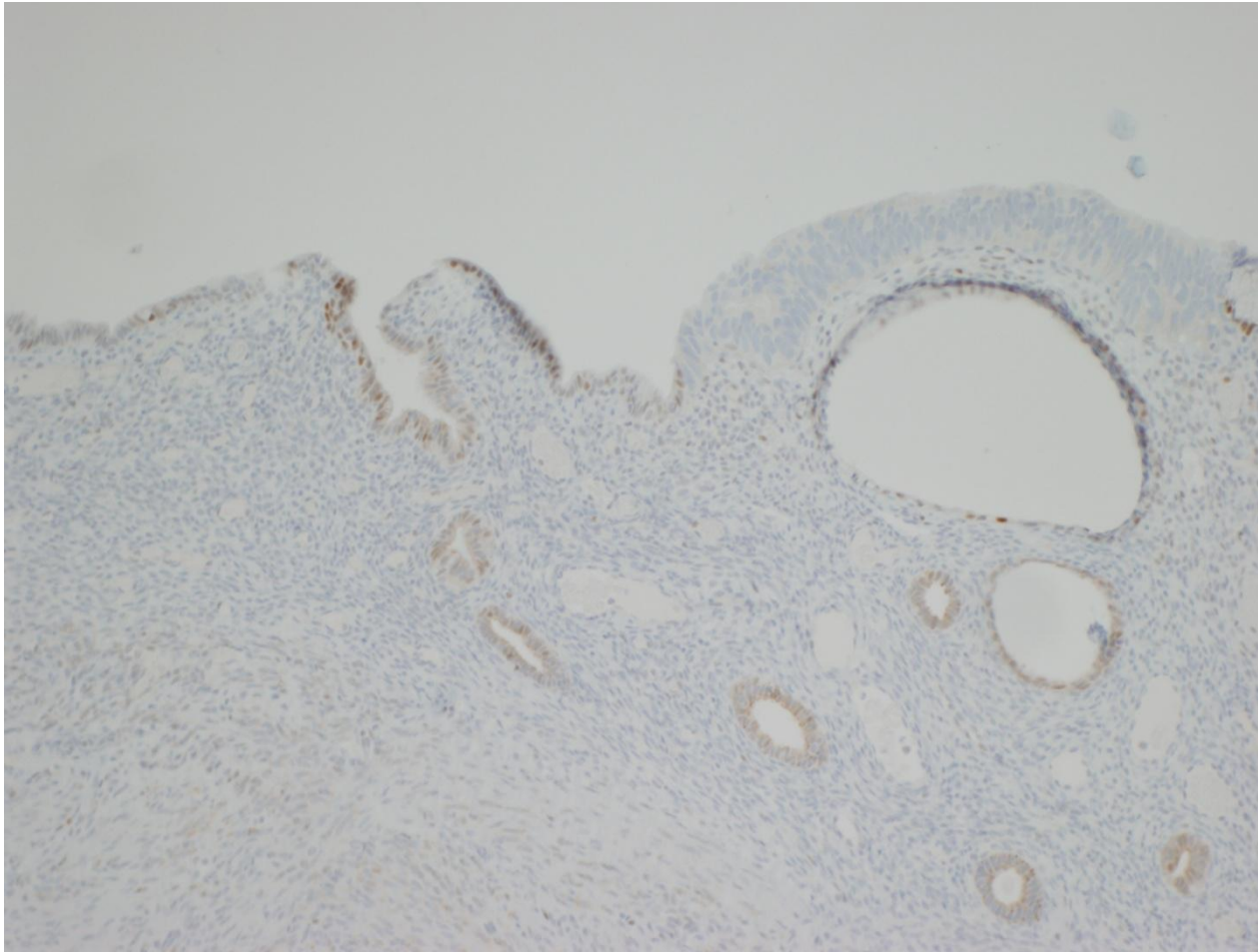
EIC

Endometrioid-like USC



p16

Endometrioid-like USC



p53

EEC vs. USC

EEC

- Cribriforming > papillary
- Tubular glands, smooth luminal contours
- Papillae – VG, SNVP
- Generally low grade atypia
- Squamous and mucinous differentiation, endometrial hyperplasia
- ER+, p53 (WT), p16 (patchy)

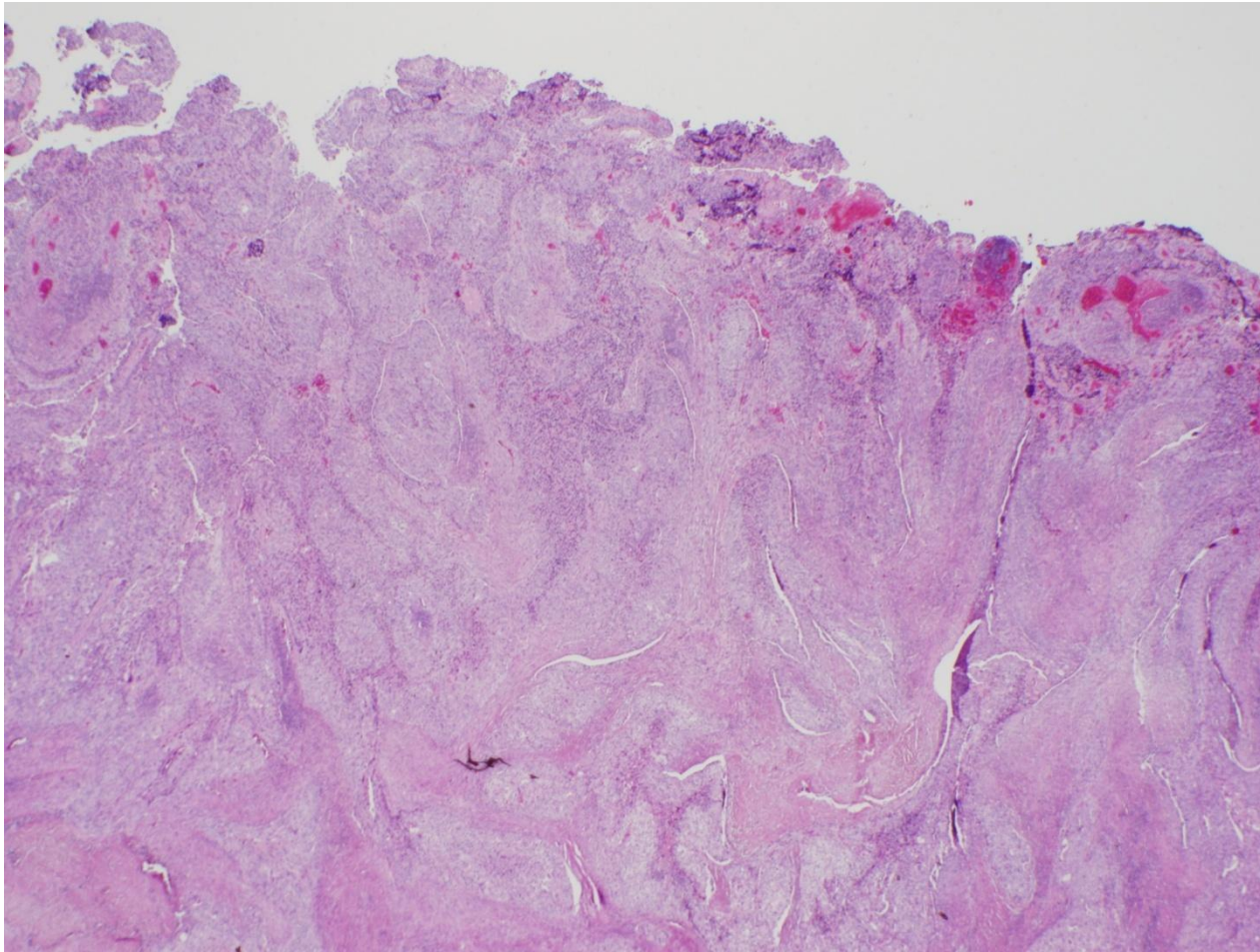
USC

- Papillary > cribriform
- Slit-like glands, serrated luminal contours
- Papillae – complex
- Diffuse high grade atypia, stratification, budding
- Endometrial intraepithelial carcinoma (EIC)
- ER-, p53 (all or none), p16+

EEC, high grade

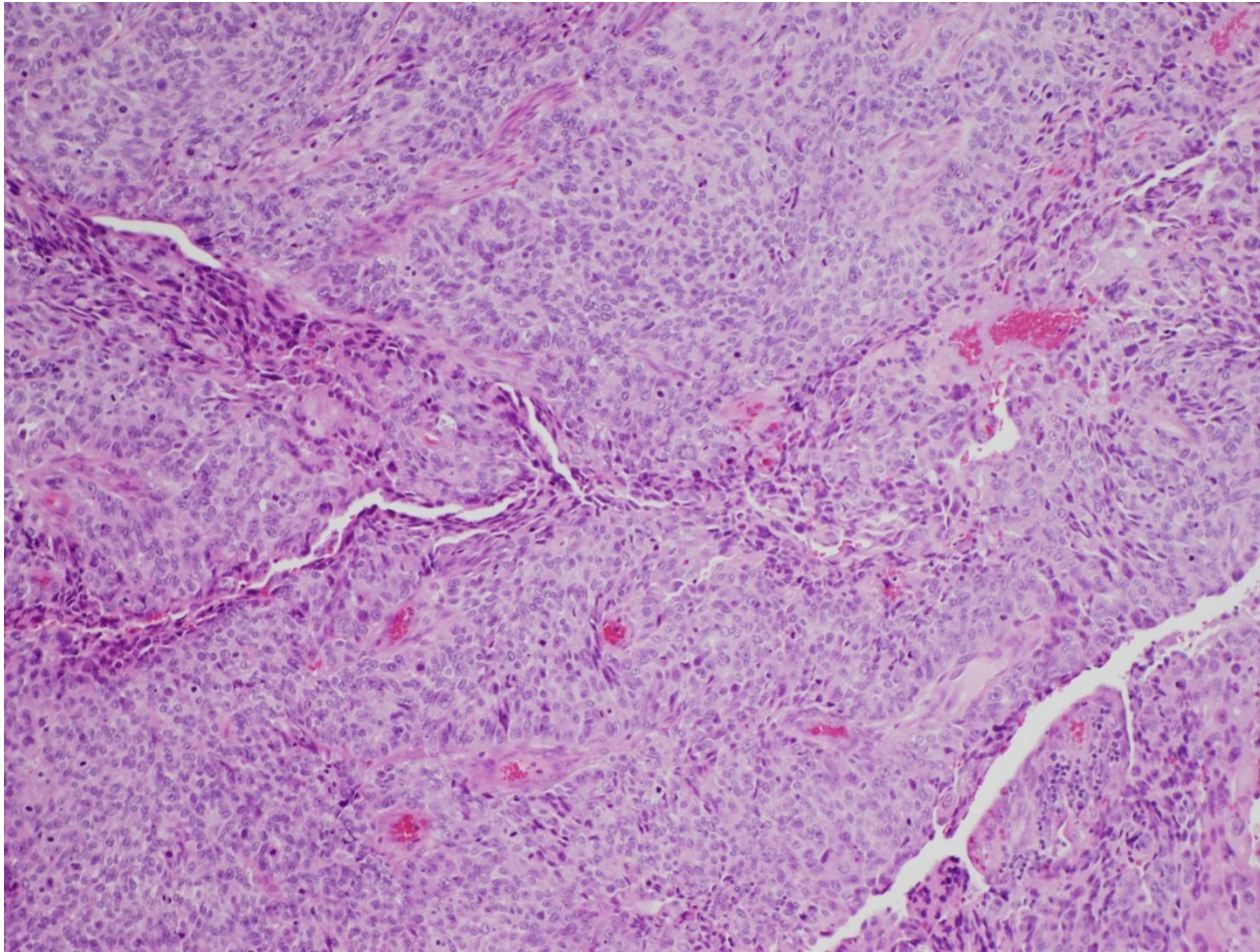
- FIGO grade 3 EEC
- Mixed EEC and undifferentiated carcinoma, so-called 'dedifferentiated EC'
- DDx:
 - MMMT

EEC, FIGO grade 3



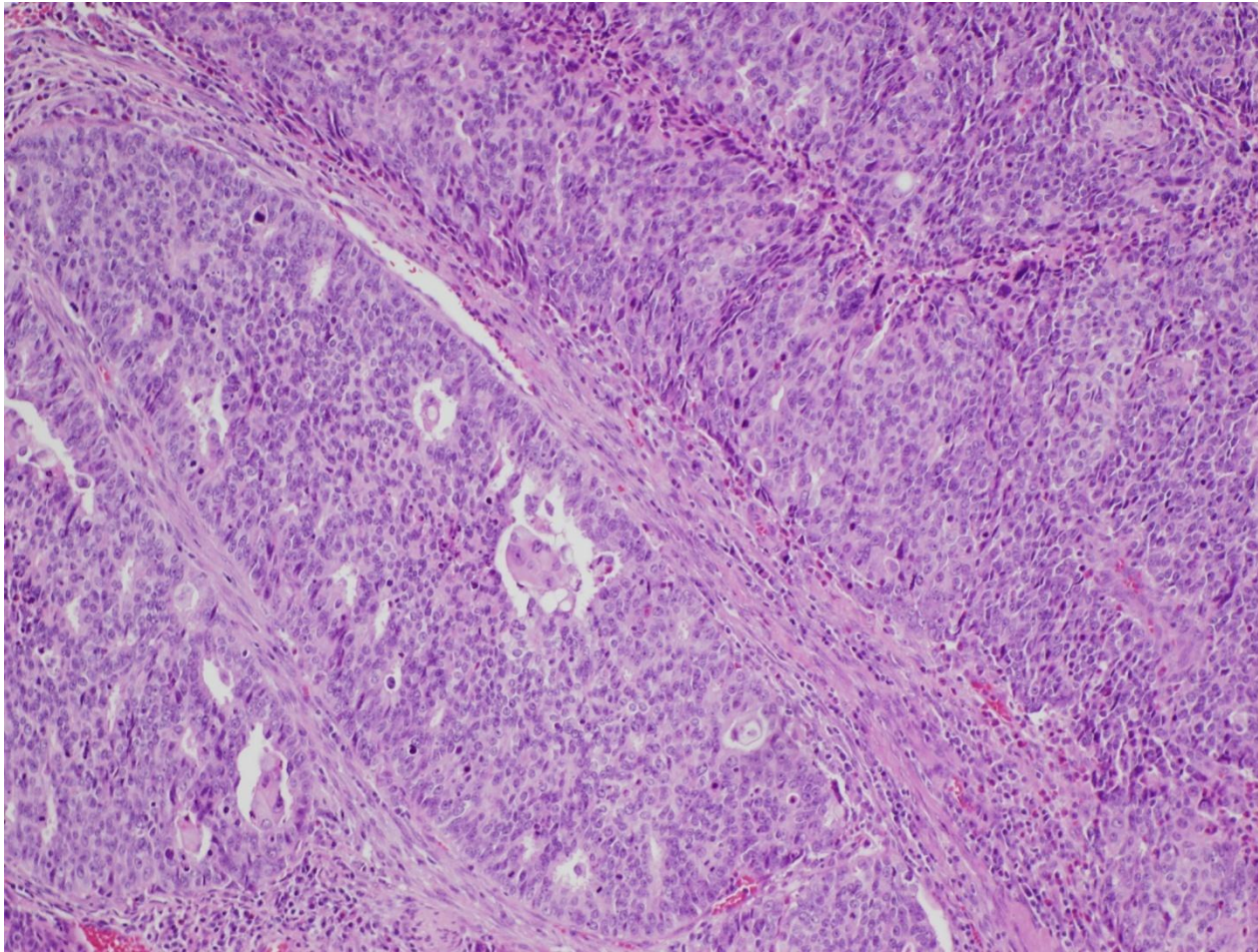
Sheet-like growth

EEC, FIGO grade 3



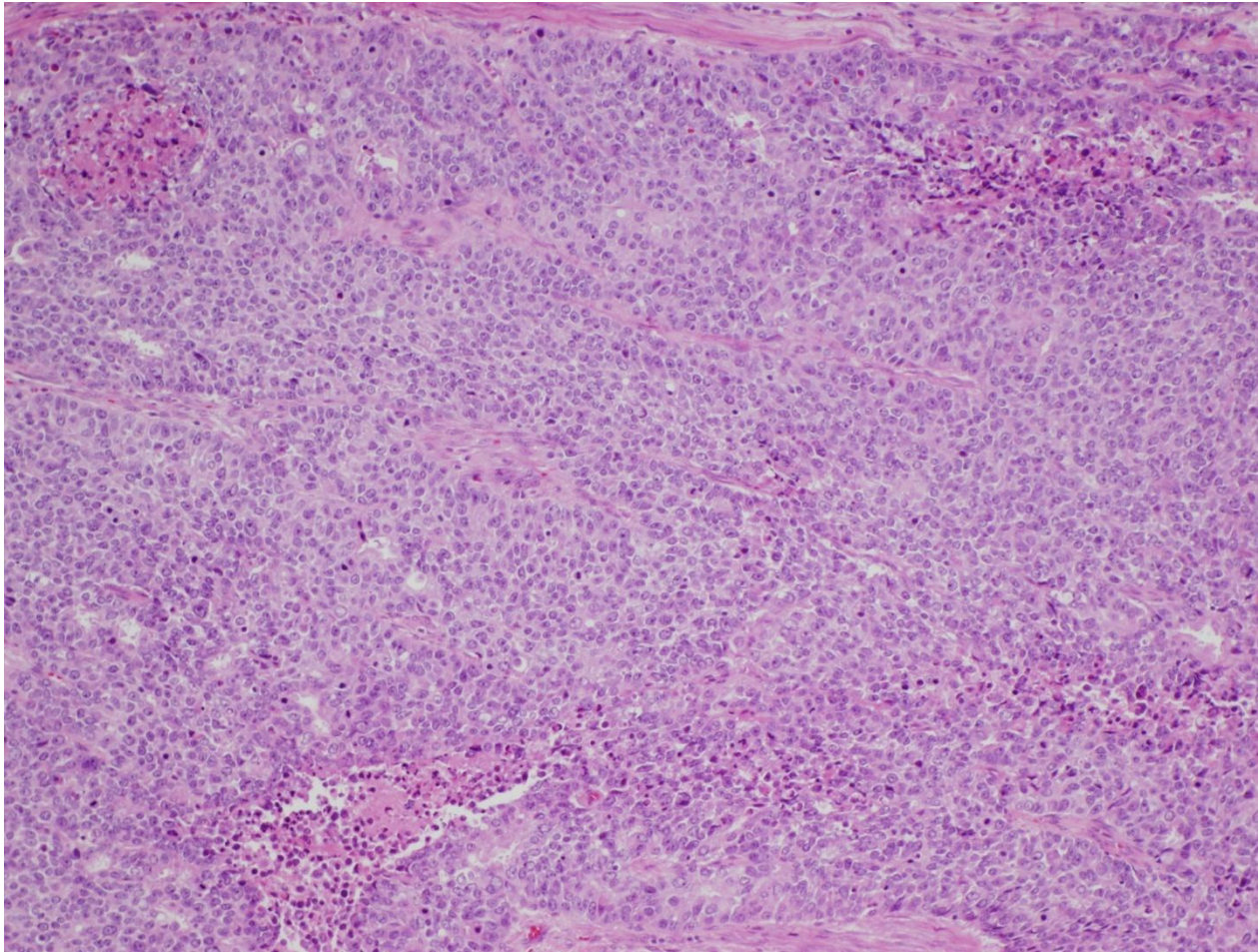
Epithelioid contours, polarization

EEC, FIGO grade 3



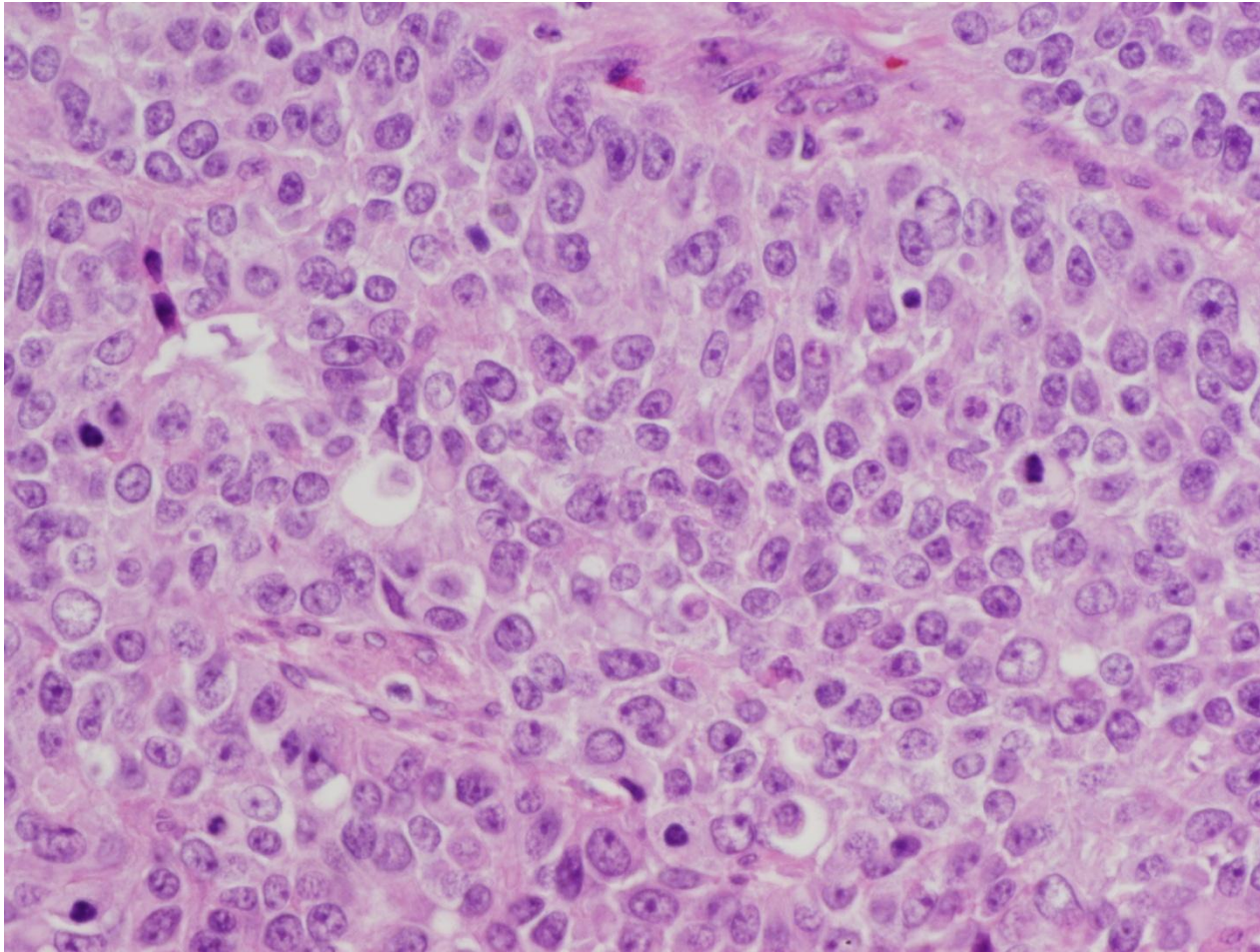
Merging of gland poor / rich areas

EEC, FIGO grade 3



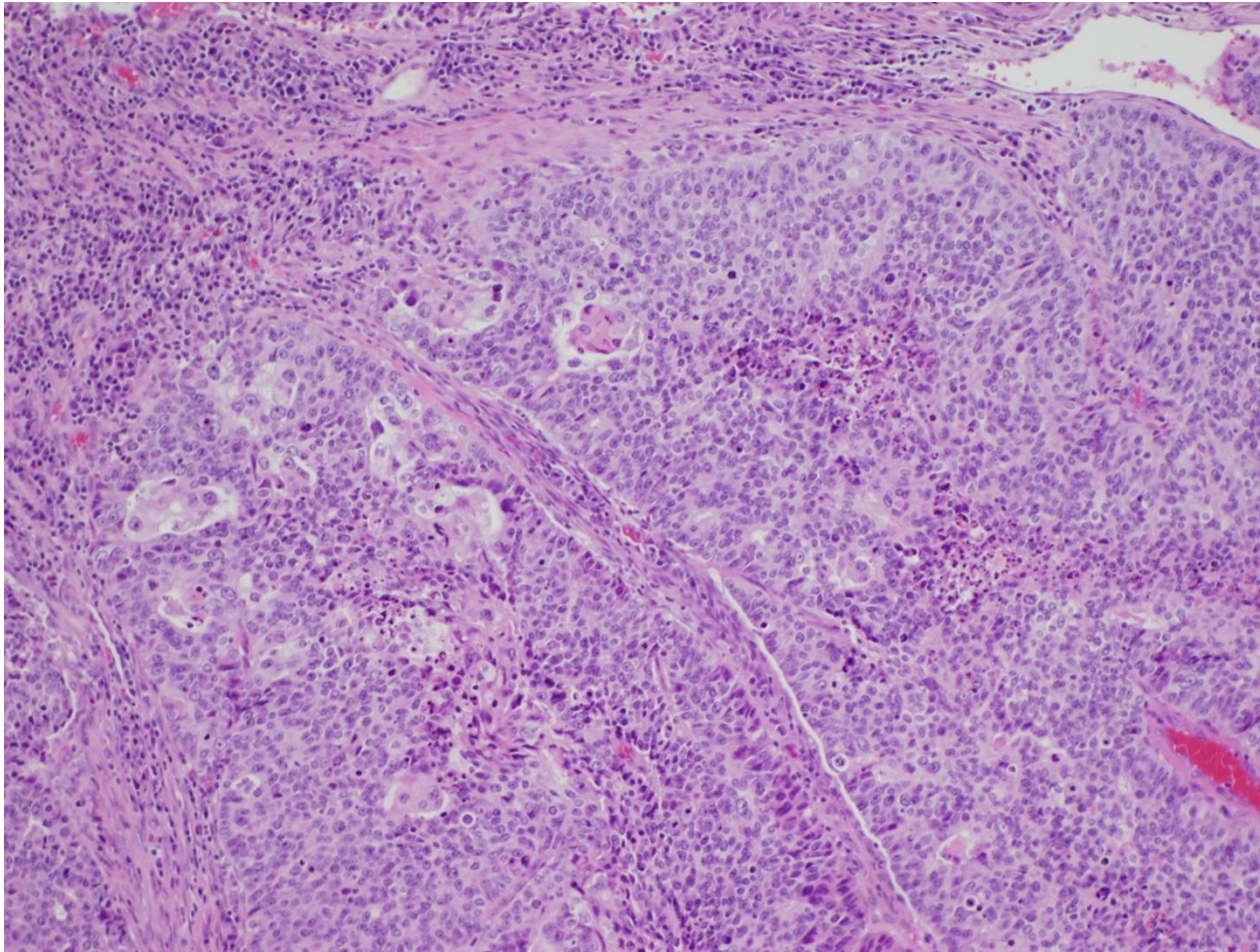
Sheets punctuated by glands

EEC, FIGO grade 3



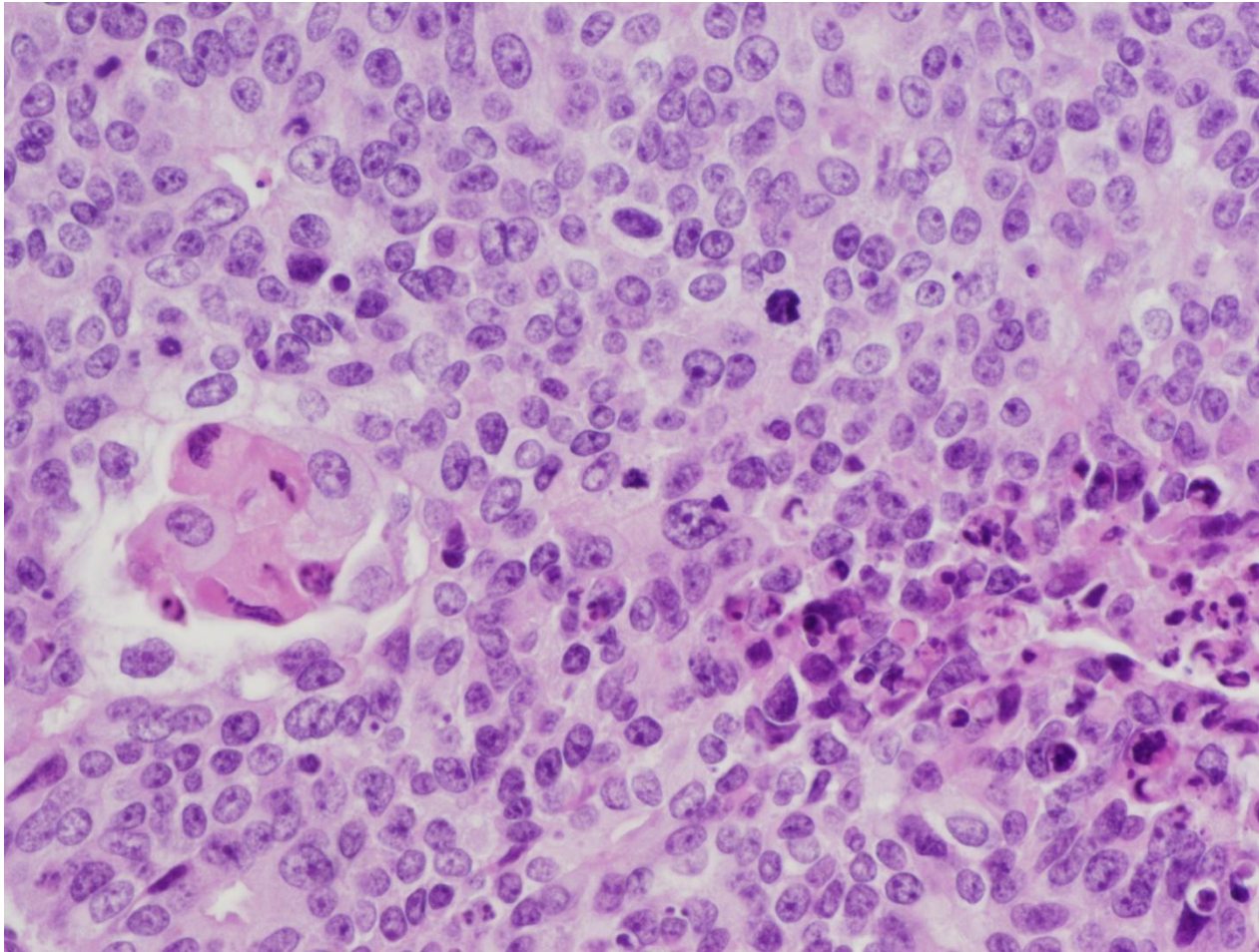
Sheets punctuated by glands

EEC, FIGO grade 3



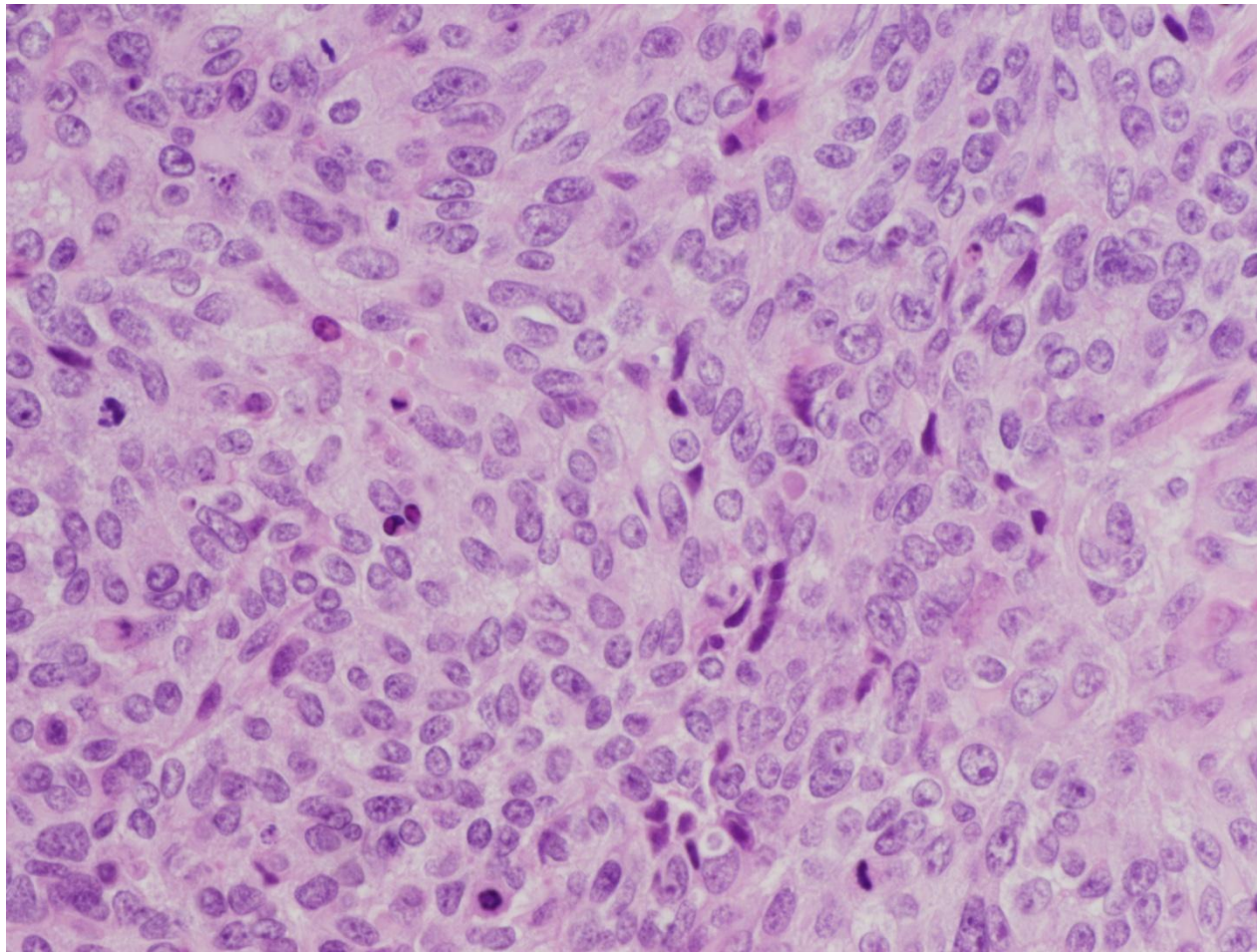
Spotty squamous differentiation

EEC, FIGO grade 3



Spotty squamous differentiation

EEC, FIGO grade 3



Mild-moderate cytologic atypia*, resembling cytology in gland forming regions

Dedifferentiated EC

- Mixed EEC (Gr. 1 or 2) and undifferentiated carcinoma (UC) components
- Behave more aggressively than FIGO 3 EEC
- Association with HNPCC
- DDx:
 - FIGO grade 3 EEC
 - MMMT
 - Lymphomas, mets from cervix, sarcomas, PSTT, PNET