

Gynecologic Pathology: The Differential Diagnosis

Shawn K. Murray MD FRCPC

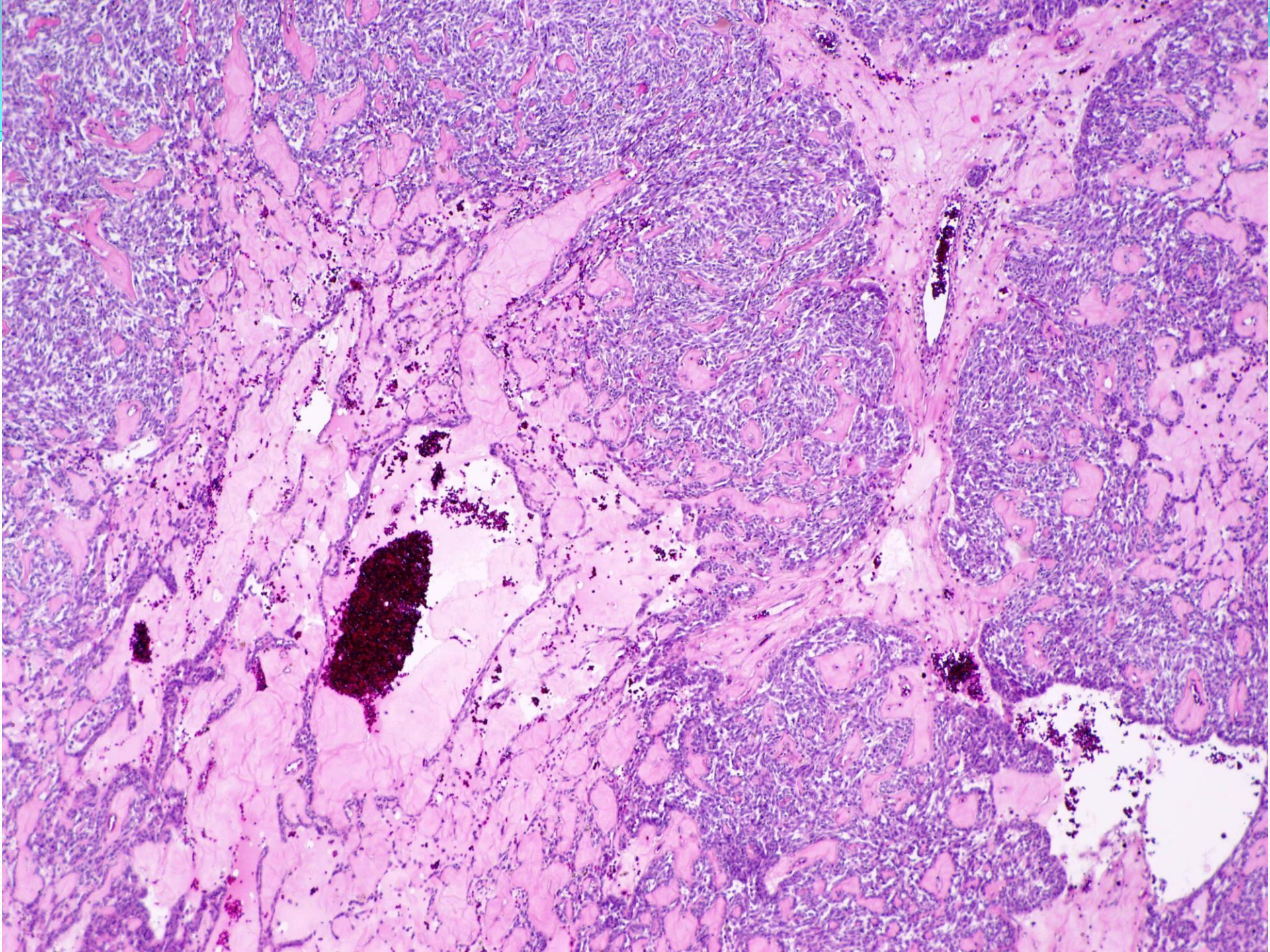
Jan. 19, 2016

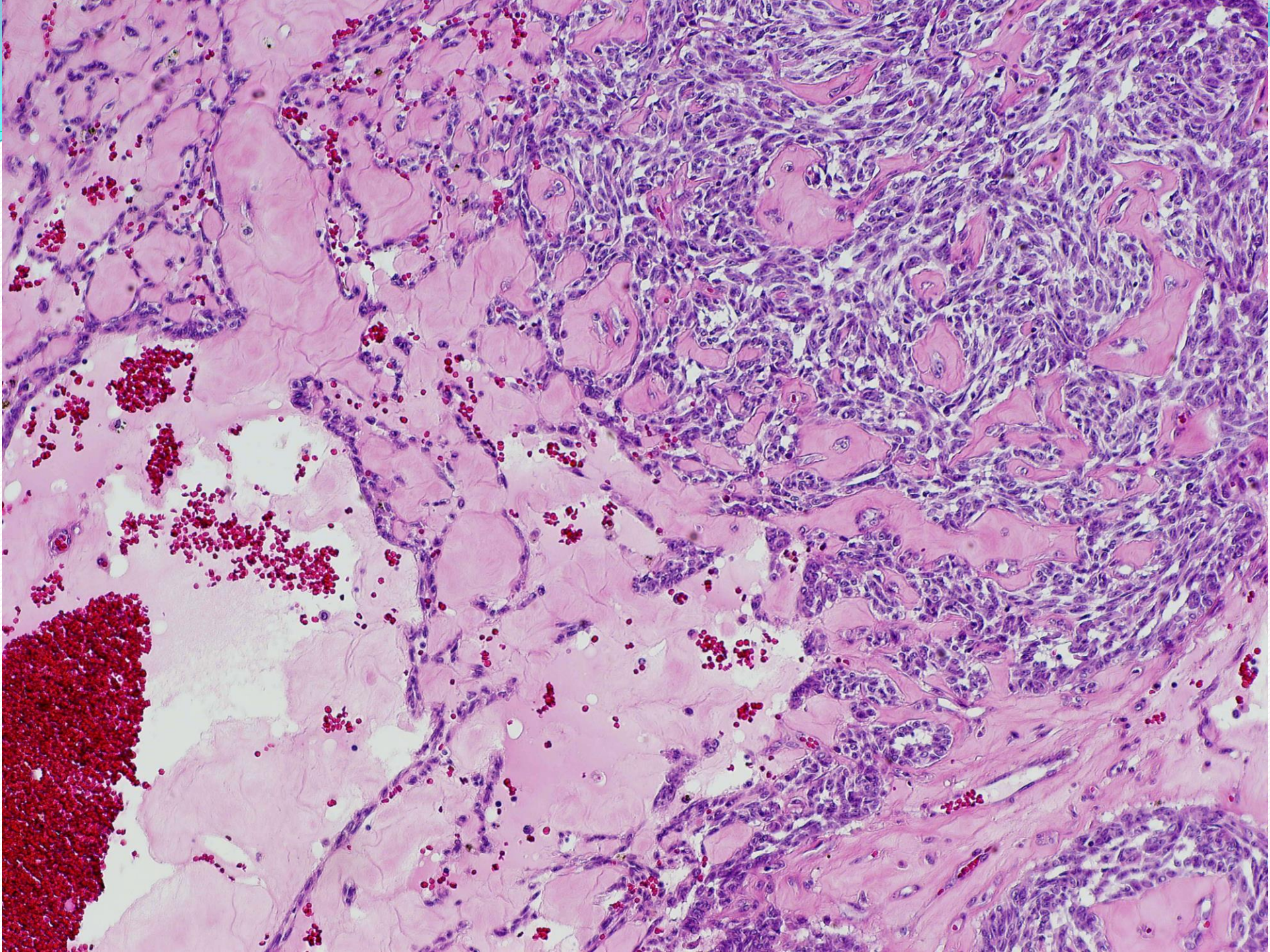
Gynecologic Pathology

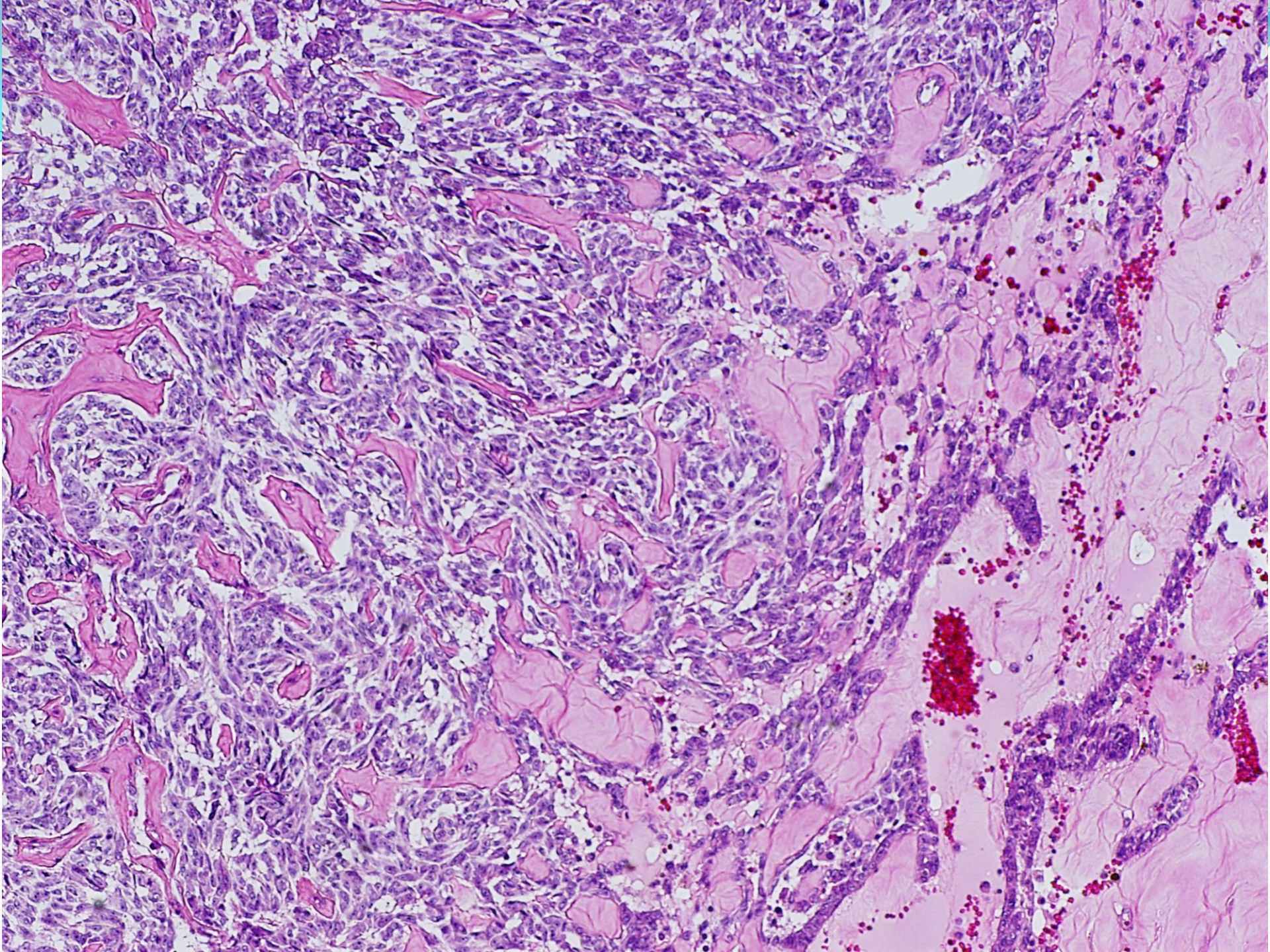
[skm/VCjan2016]

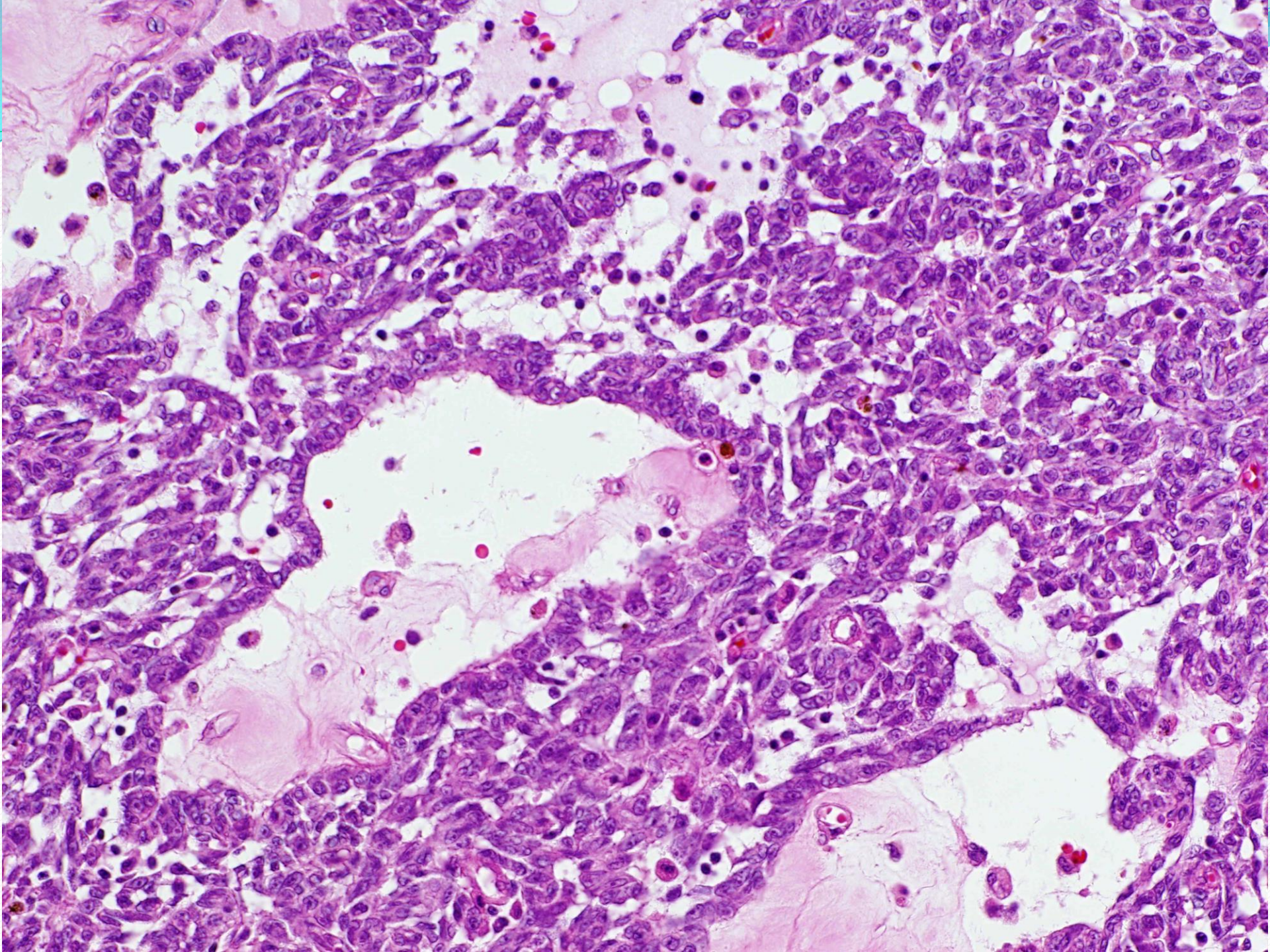
CASE I

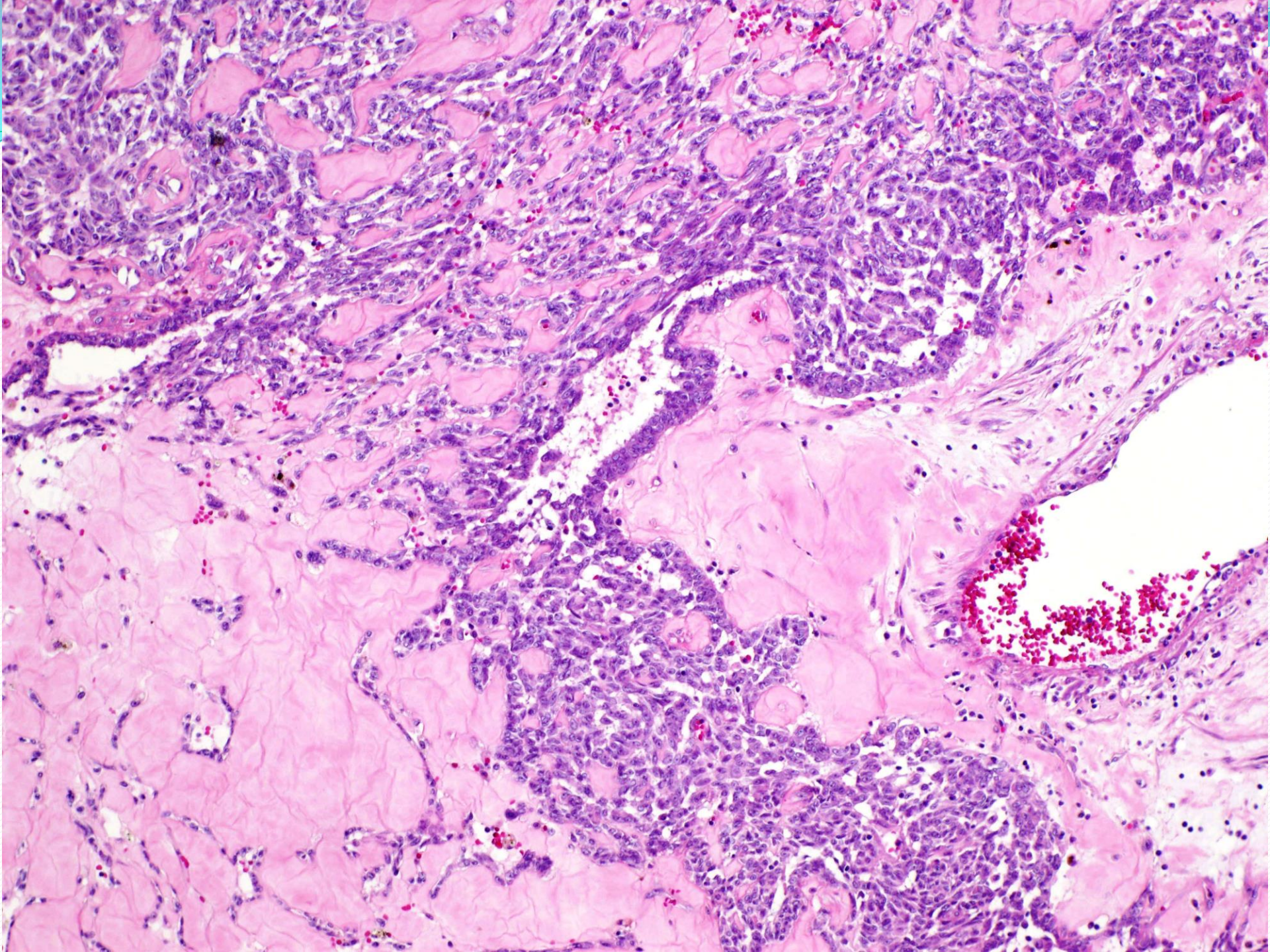


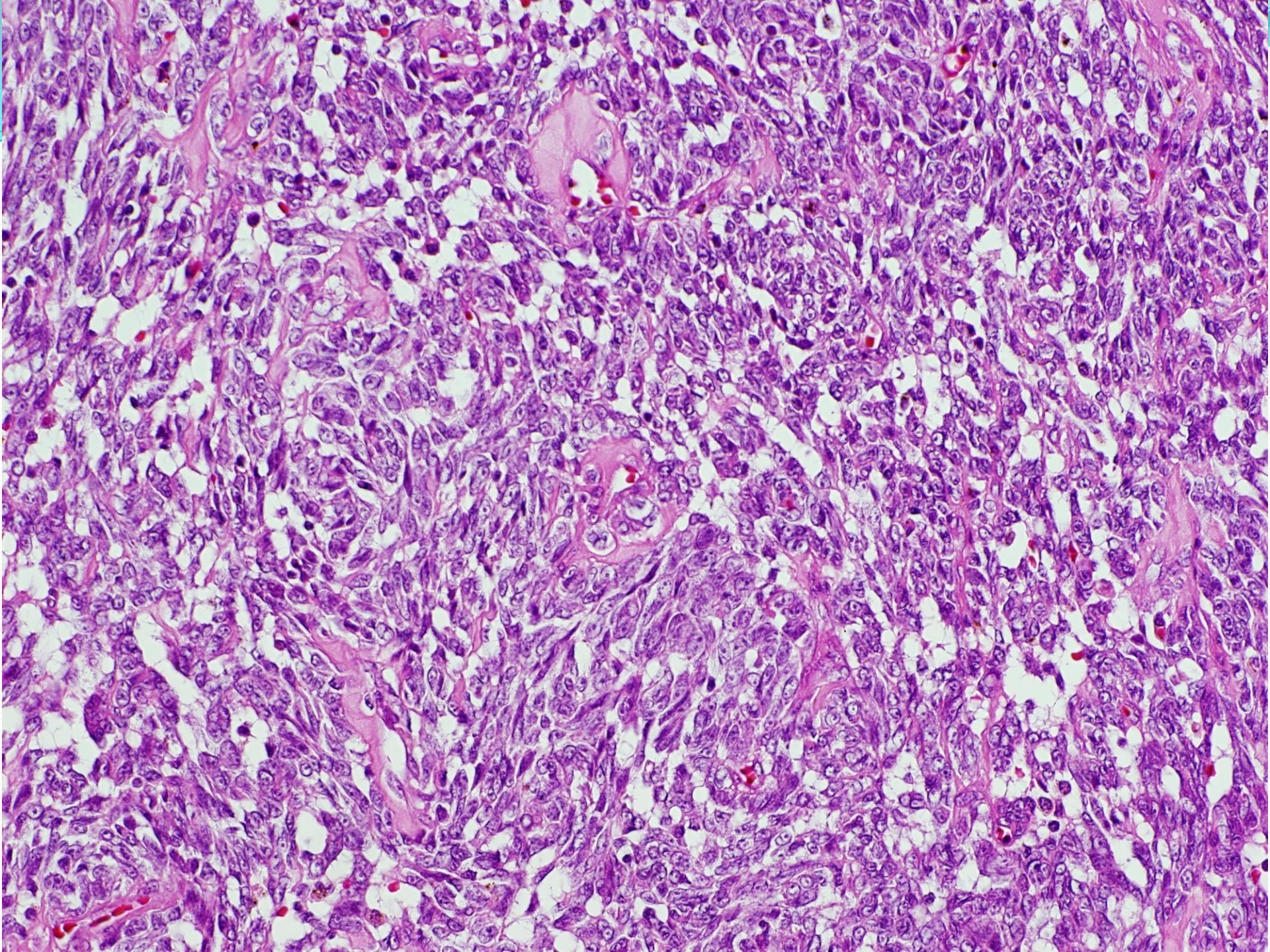












“BIPHASIC” UTERINE TUMOR

- MMMT
- ESS [glands/sex cord differentiation]
- UTROSCT
- ADENOSARCOMA (?S/O)
- CHEC

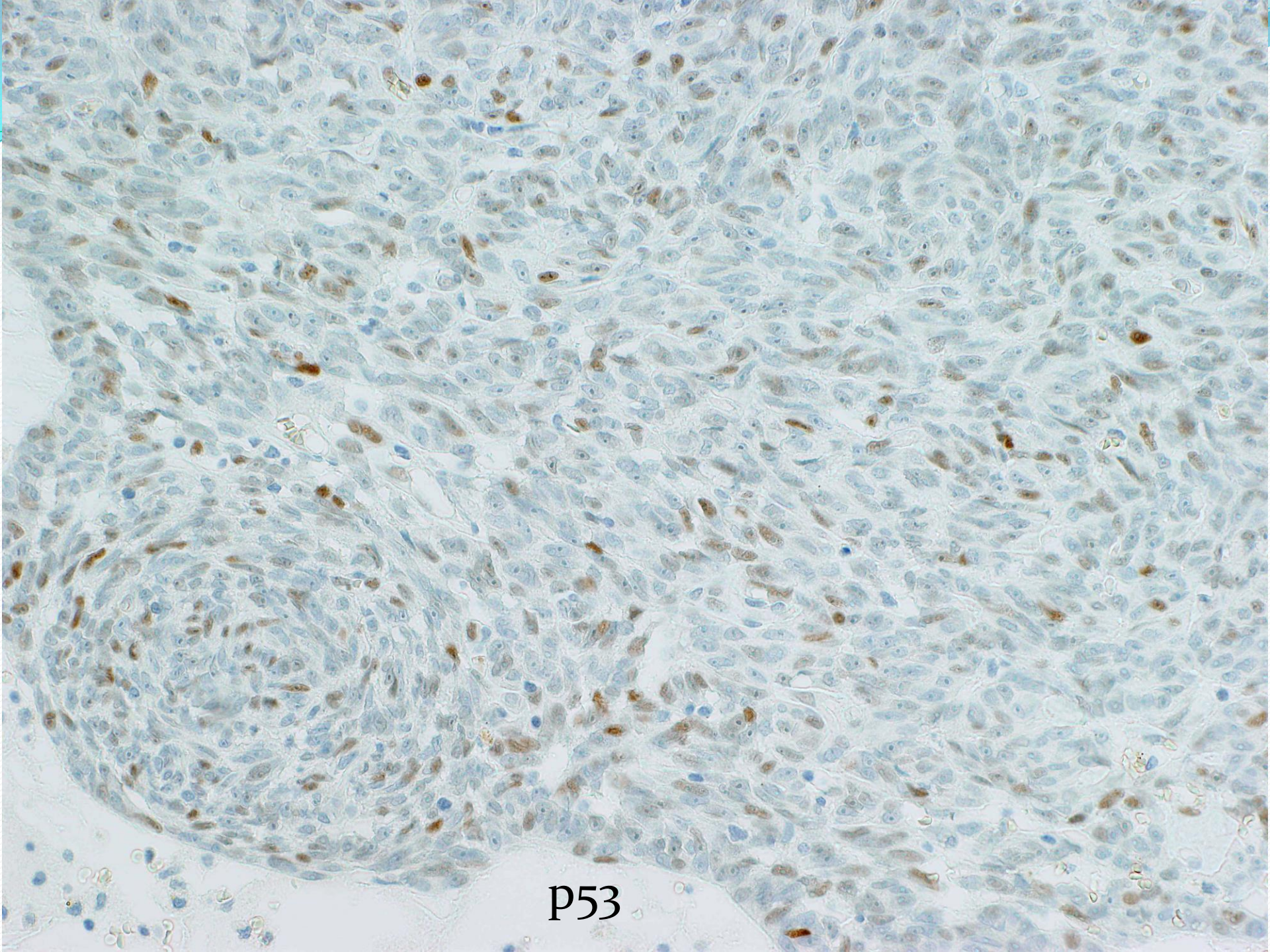


Ae1/Ae3



ER

This is a histological section of tissue, likely stained with hematoxylin and eosin (H&E). The tissue shows a complex arrangement of cells and structures. The brown staining is prominent in the cytoplasm and nuclei of many cells, suggesting a high concentration of certain cellular components or the presence of specific markers. The blue staining highlights the nuclei of the cells. The overall structure appears to be a glandular or epithelial tissue, with various ducts and cellular clusters visible. The label 'ER' is located in the lower-left corner of the image.



p53

CORDED AND HYALINIZED ENDOMETRIOID CARCINOMA (CHEC)

- (1) Wani Y, Saegusa M, Notohara K. Aberrant nuclear beta-catenin expression in the spindle or corded cells in so-called corded and hyalinized endometrioid carcinomas. Another critical role of the unique morphological feature. *Histol Histopathol.* 2009 Feb;24(2):149-55.
(2) ['SPICO' CELLS]
- (3) Murray SK, Clement PB, Young RH. Endometrioid carcinomas of the uterine corpus with sex cord-like formations, hyalinization, and other unusual morphologic features: a report of 31 cases of a neoplasm that may be confused with carcinosarcoma and other uterine neoplasms. *Am J Surg Pathol.* 2005 Feb;29(2):157-66.