

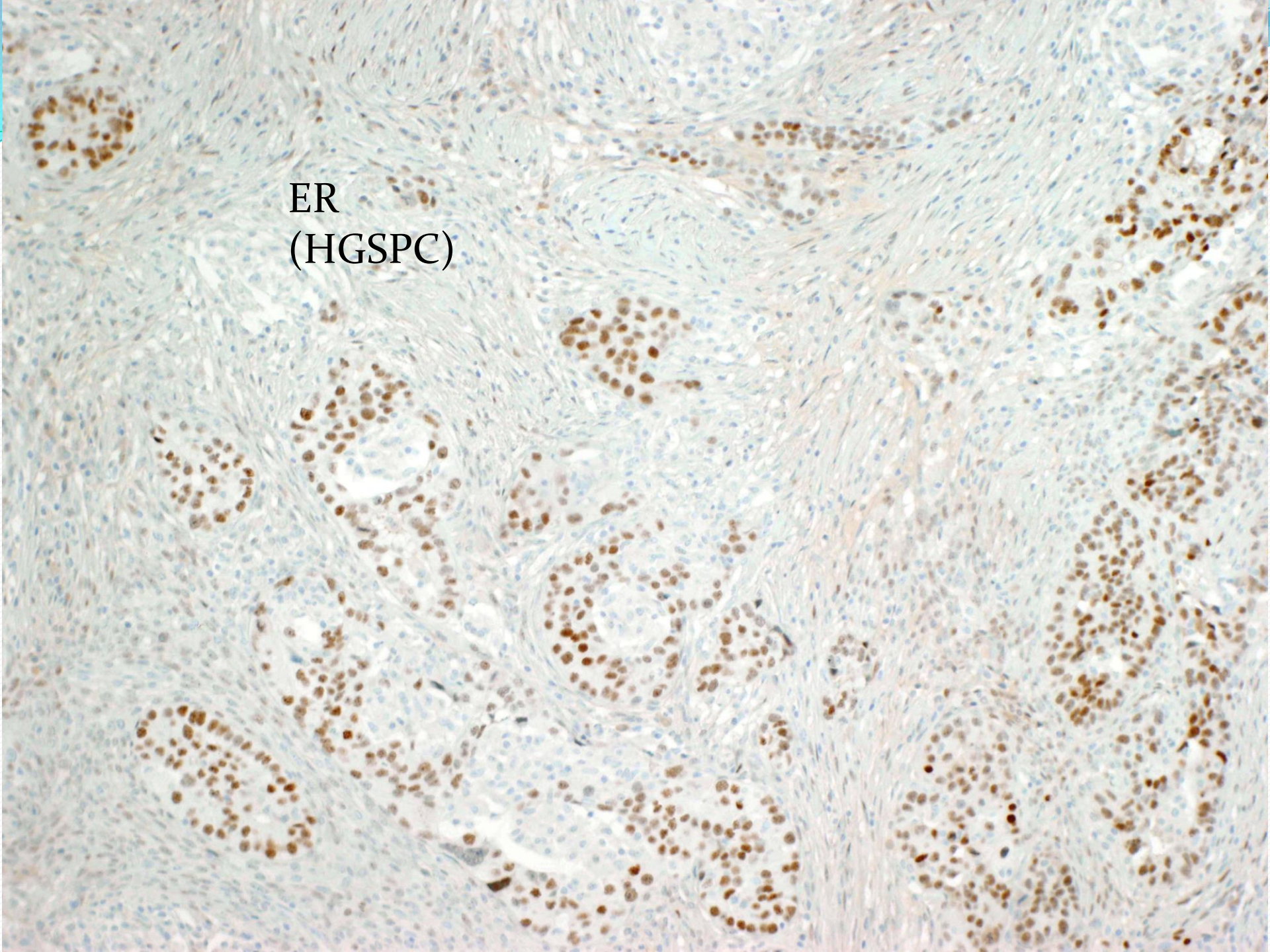
HIGH GRADE MIXED TUMOR OF FALLOPIAN TUBE: DIFFERENTIAL DIAGNOSIS

- Giant Cell Carcinoma
- Spindled Wolffian-like Ca of FT
- Biphasic (1) MMMT
- Biphasic (2) HGSPC + UC
- Biphasic (3) HGSPC + 'dedifferentiated' tumor
- METASTASIS

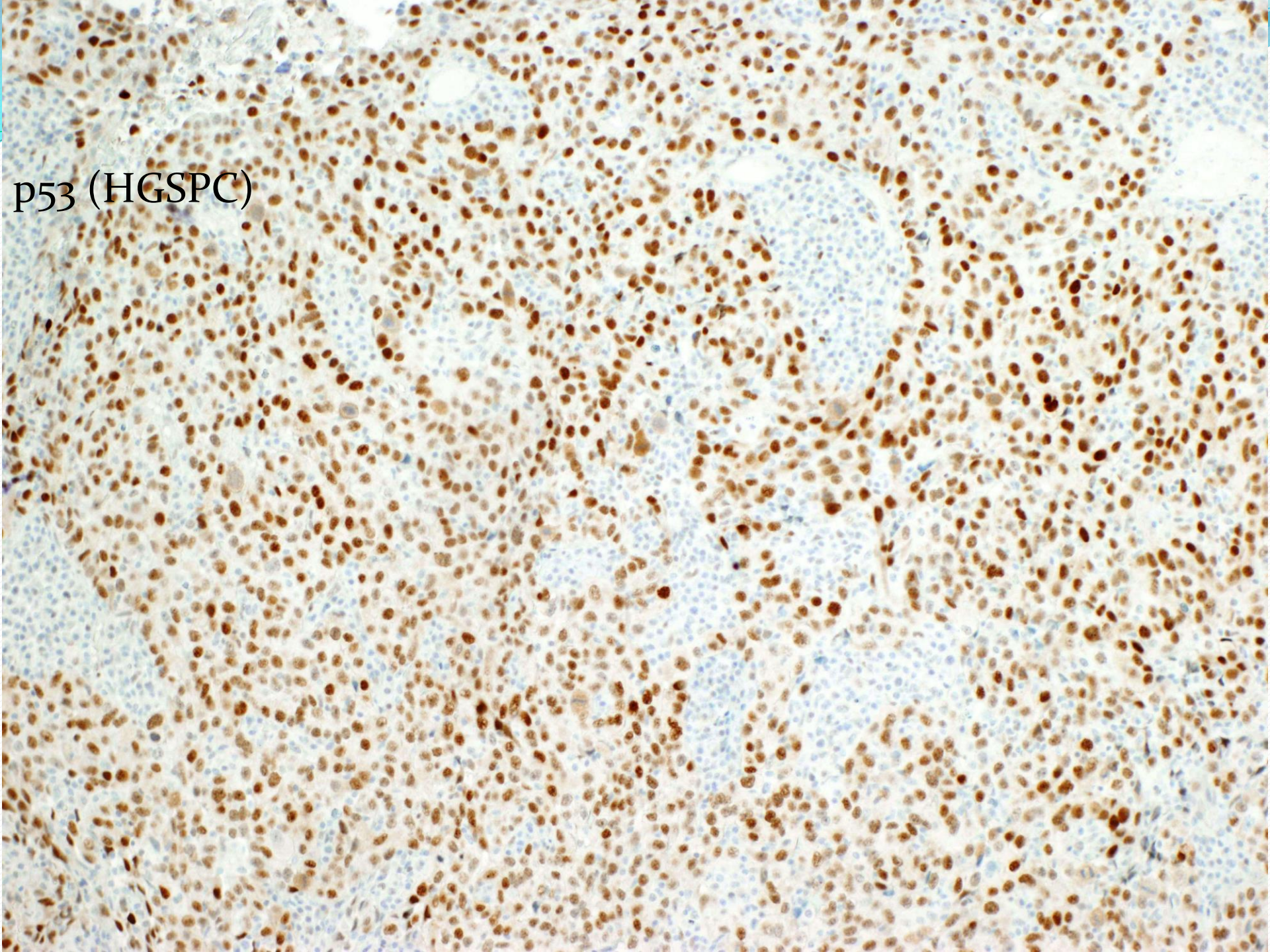
(De)differentiation in Mullerian Tumors:

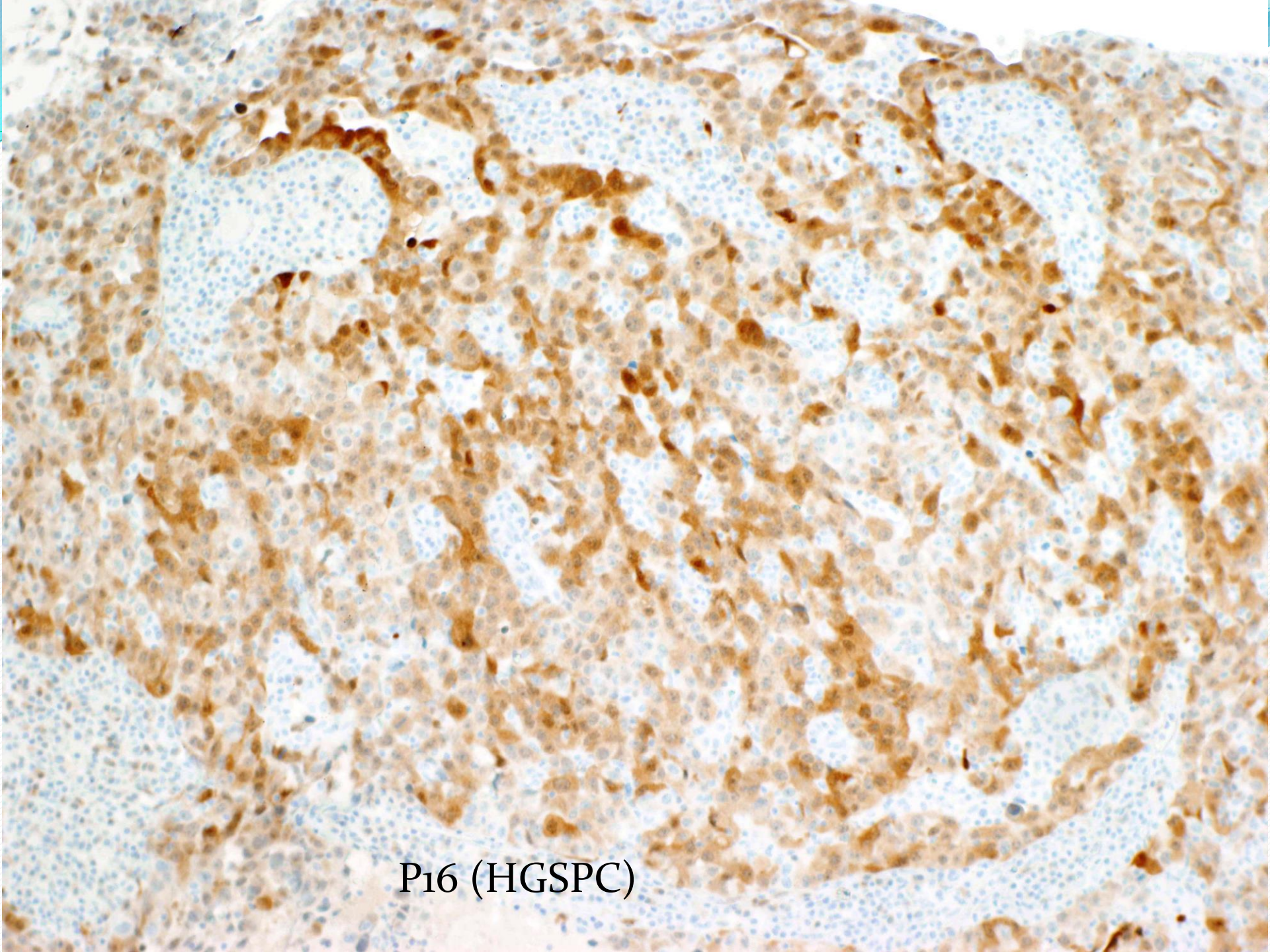
- 1. High Grade Surface Epithelial Carcinoma (HGSEC) -
---- undifferentiated/anaplastic Ca (solid epithelioid, 'lymphoma-like', or pleomorphic with patchy keratin expression)
- 2. HGSEC ----- high grade sarcoma (homologous, heterologous) (o/g by sarcoma (loss of biphasic growth), lack epithelial markers)
- 3. HGSEC ----- germ cell neoplasia (EST, CC)
- (HCG, HPL, PLAP, D2-40, c-kit, OCT_{3/4}, AFP)

ER
(HGSPC)

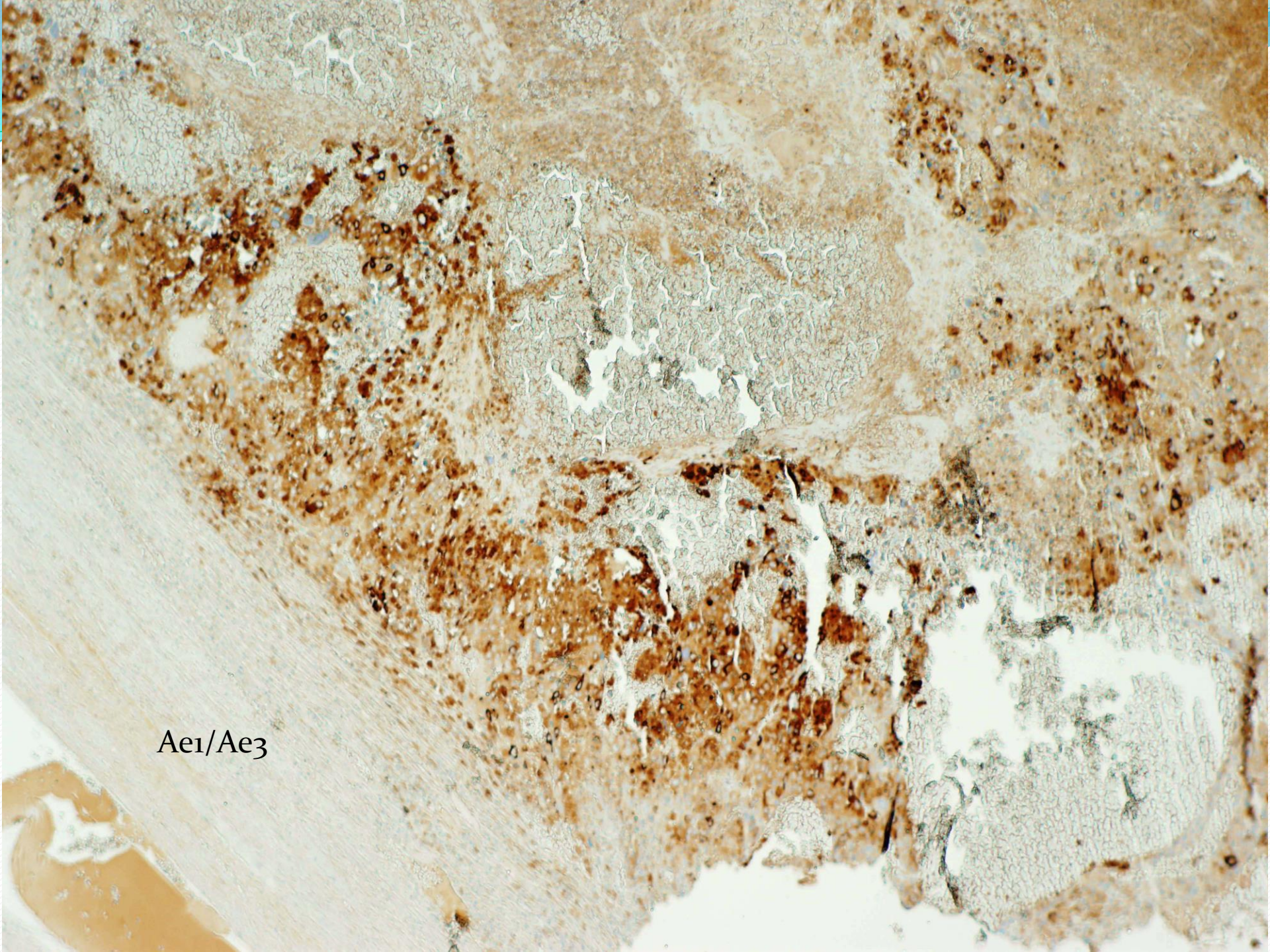


p53 (HGSPC)



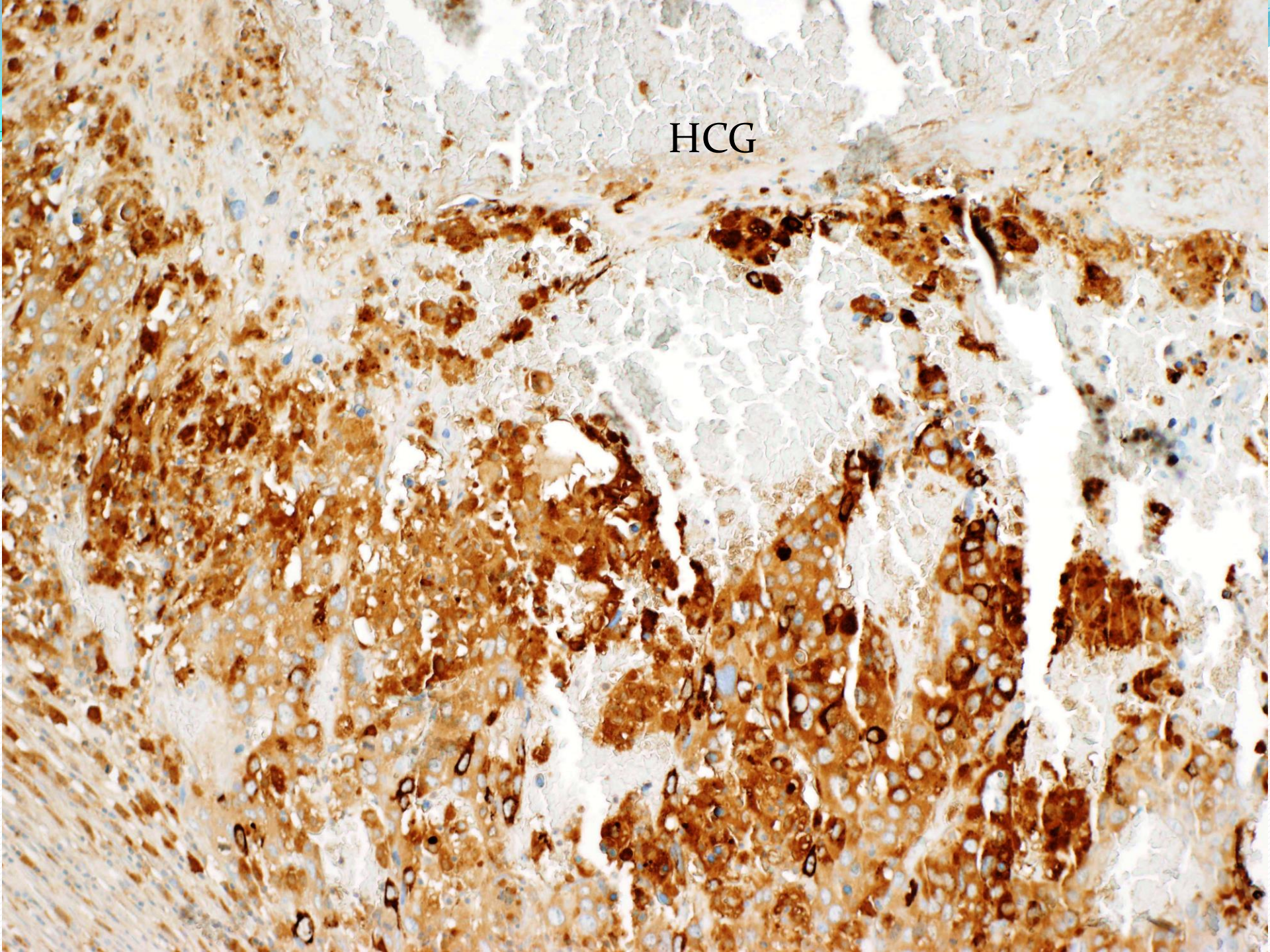


P16 (HGSPC)

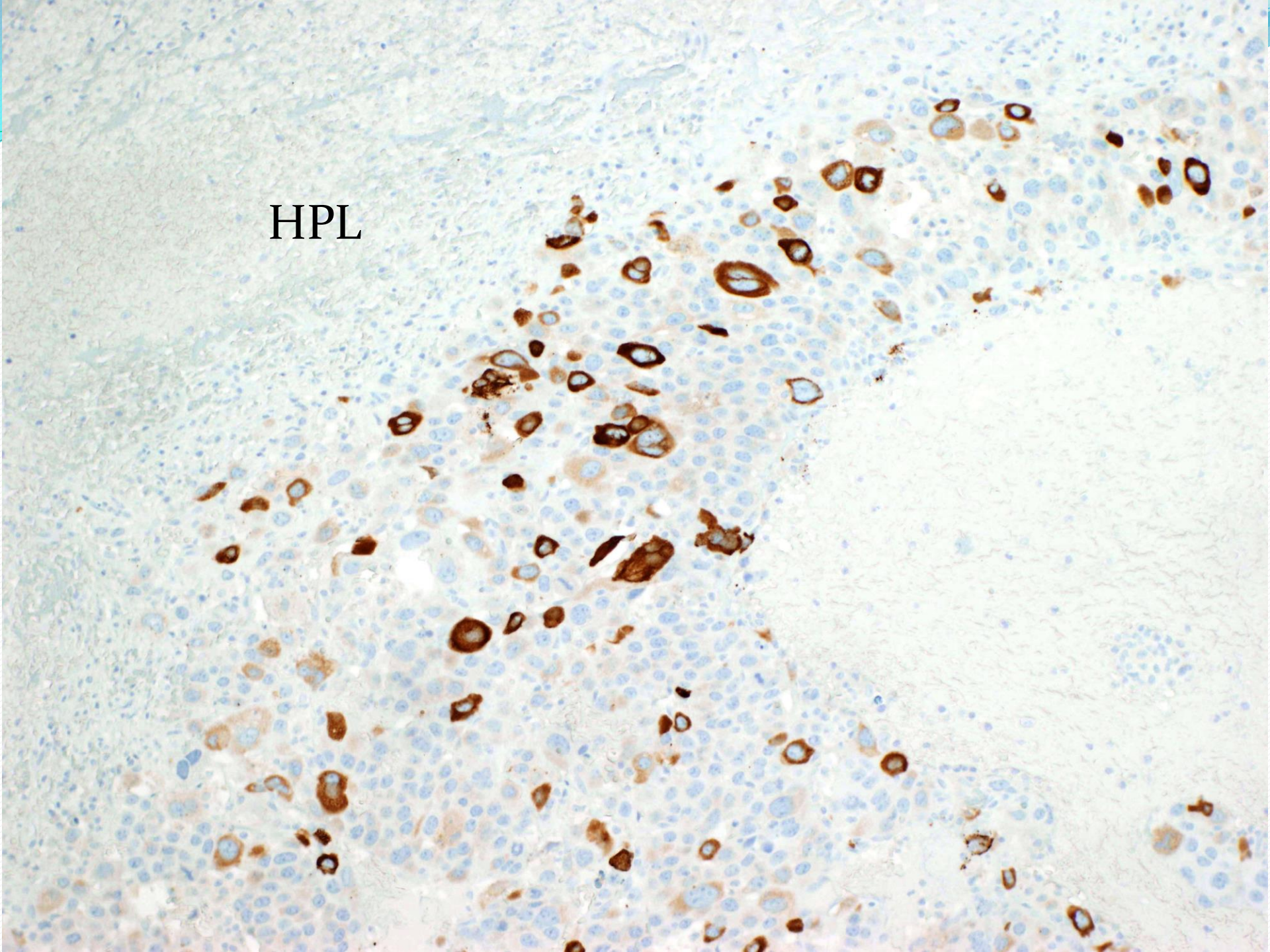


Ae1/Ae3

HCG



HPL



HGSPC/UNDIFF. Ca FT with (De)differentiation to Choriocarcinoma

- Choriocarcinoma (CC) (the '3rd pathway')
- 1. Gestational CC
- 2. Germ Cell Neoplasia (extraembryonic diff)
- 3. Somatic Cell Dedifferentiation
- (1) Wakahashi et al. J Cancer. 2012;3:14-8.
Endometrioid adenocarcinoma with high-grade transformation with serous and choriocarcinomatous differentiation.



Gynecologic Pathology

[skm/VCjan2016]

CASE IV

