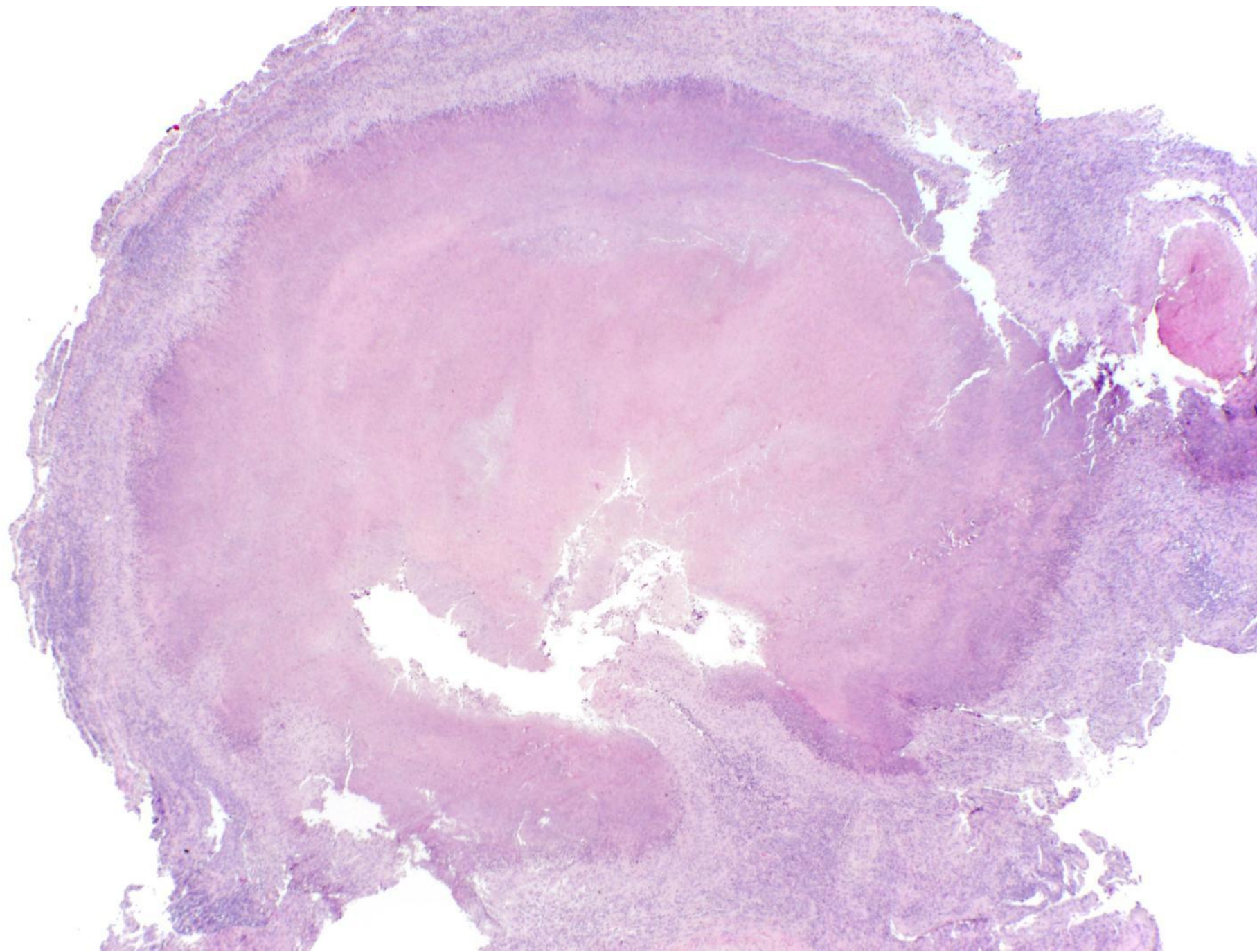
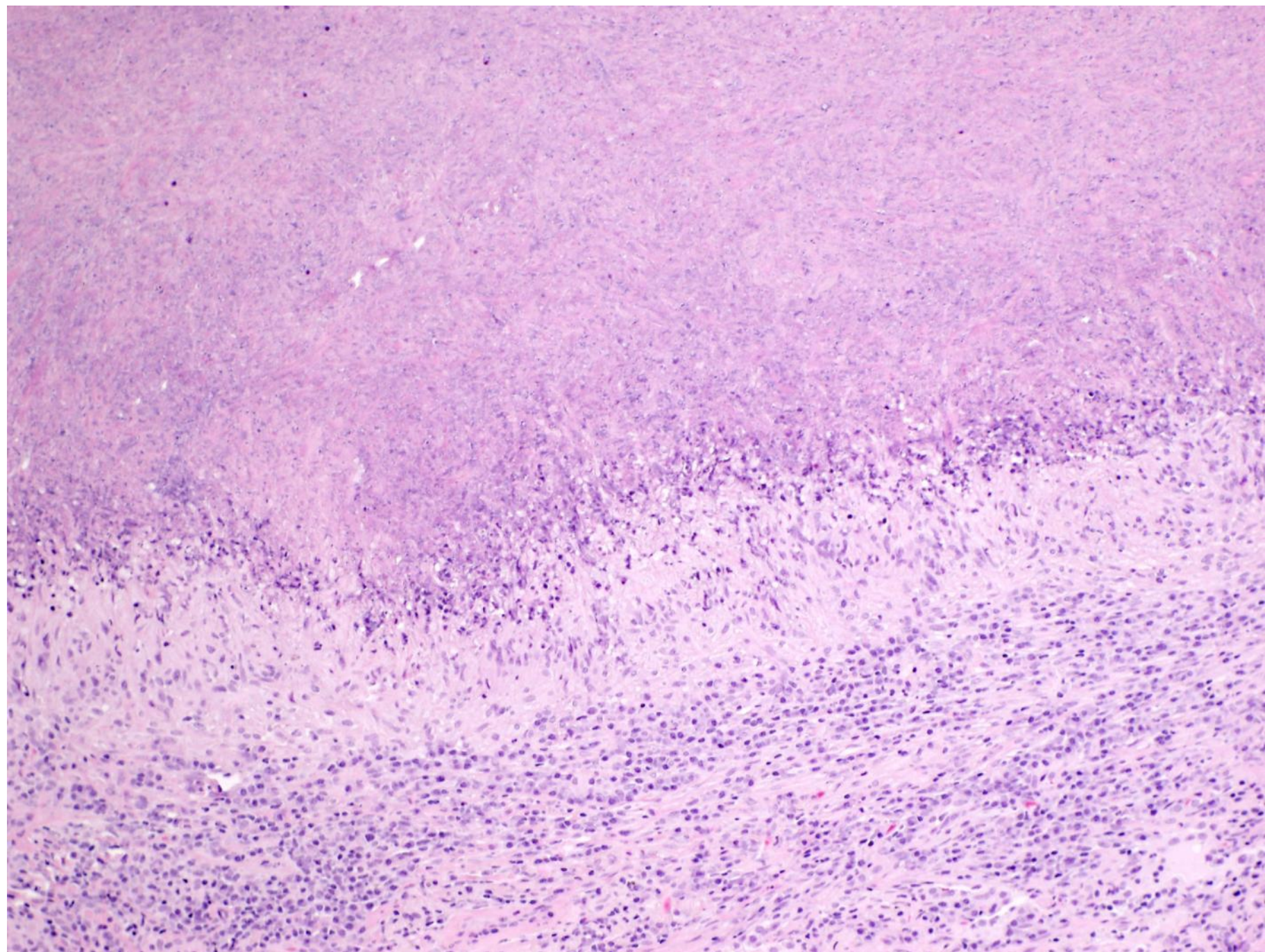
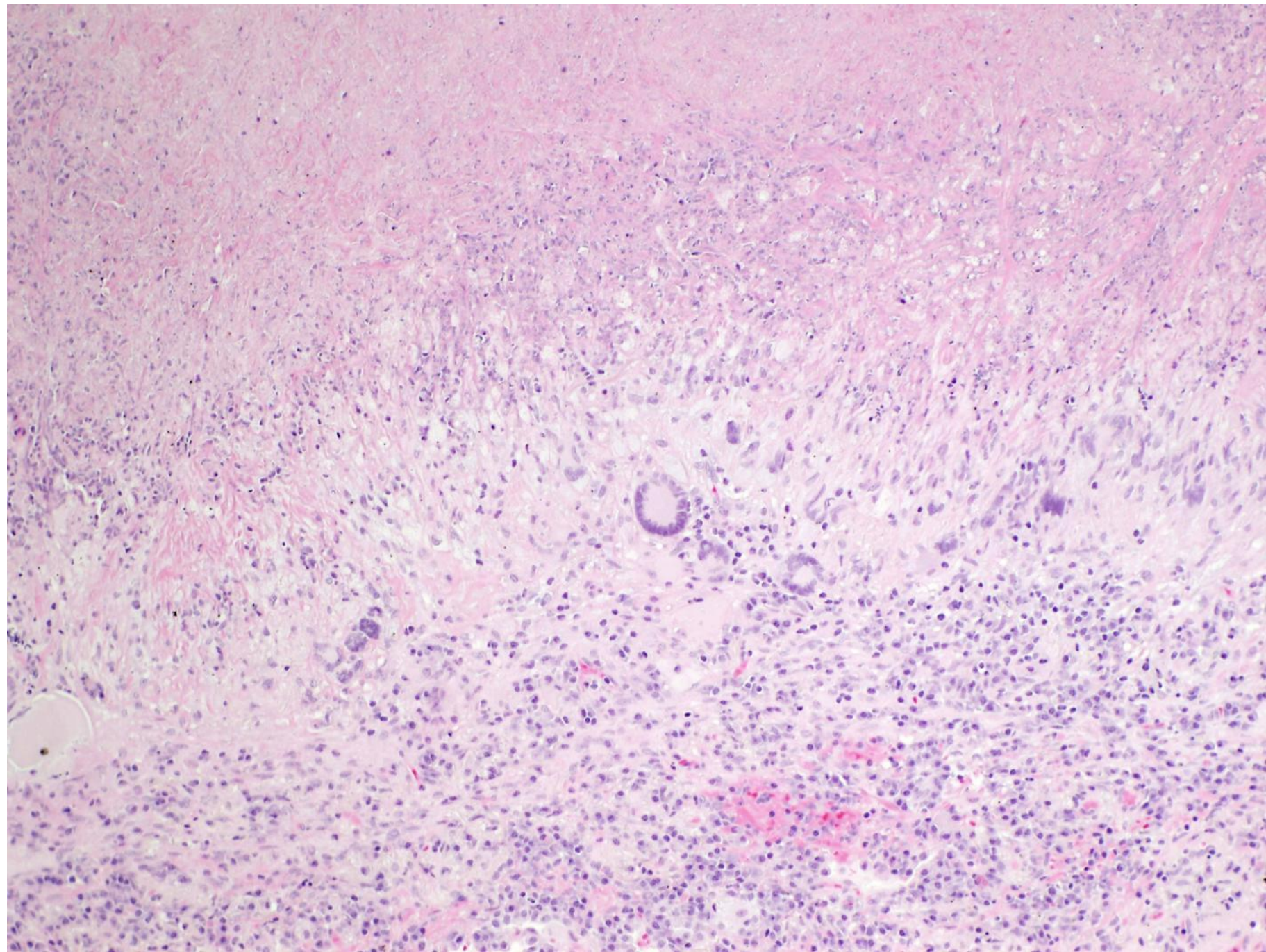


Miscellaneous lesions

- Rheumatoid nodule
 - uncommon in the lung
 - similar to subcutaneous rheumatoid nodules

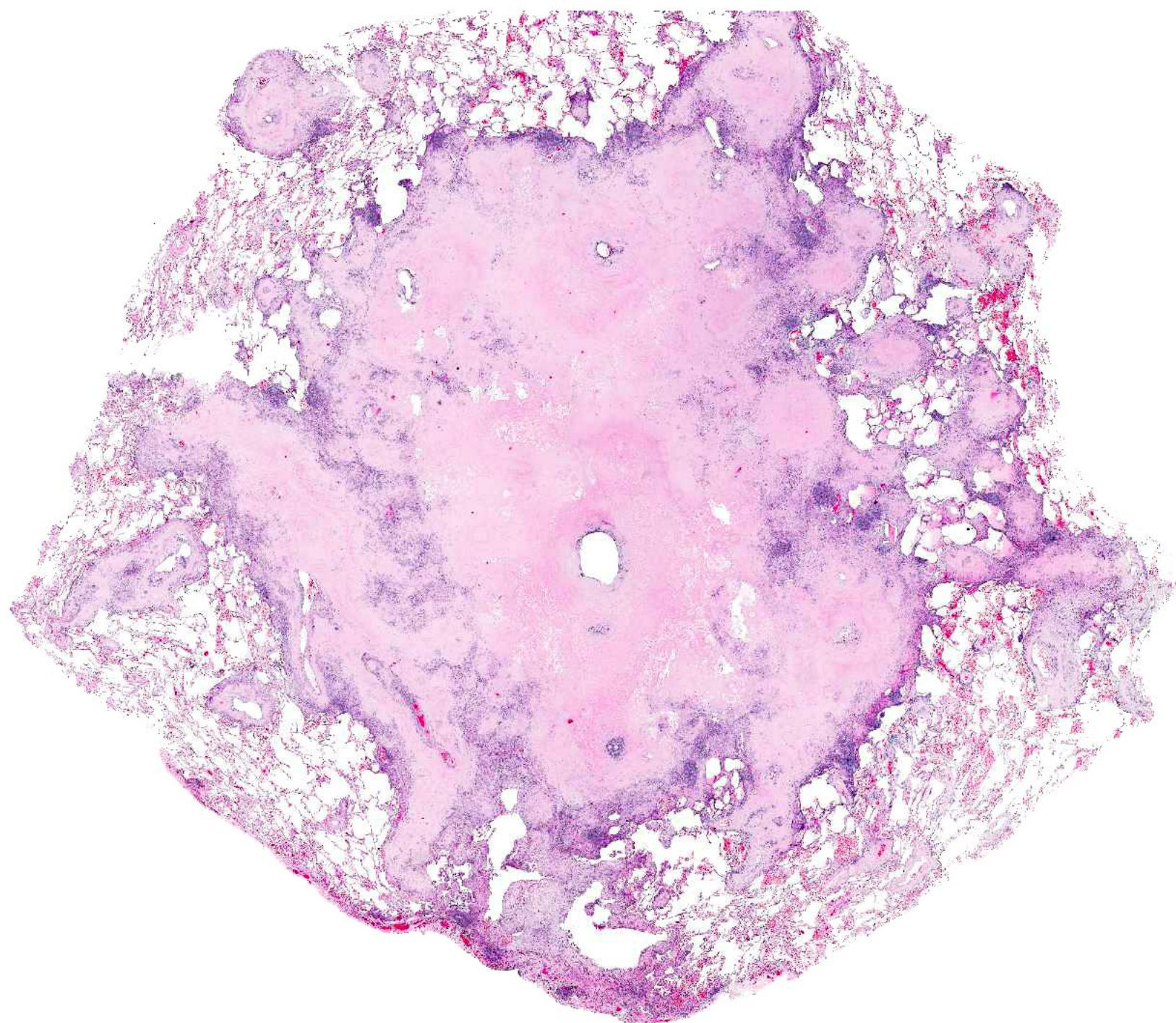


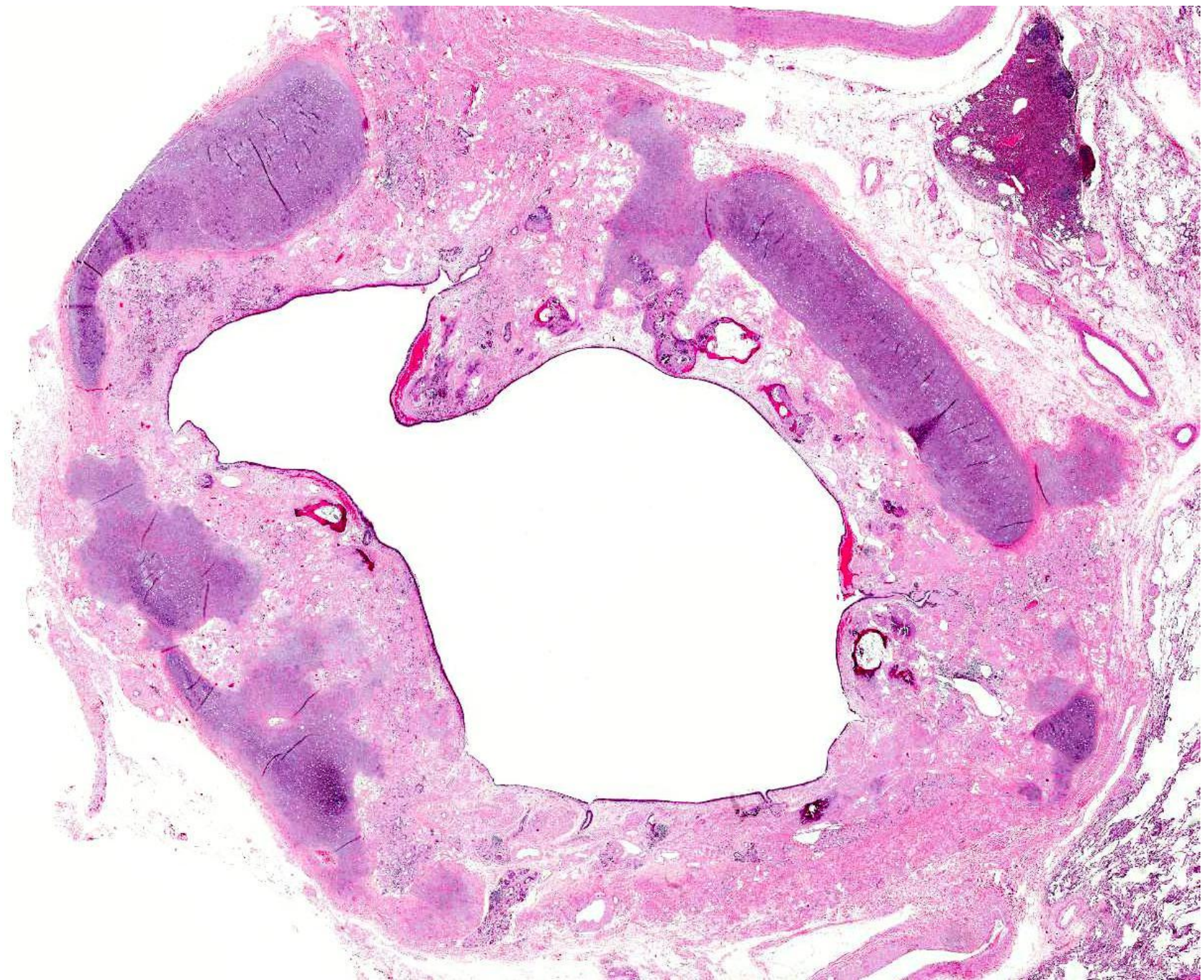


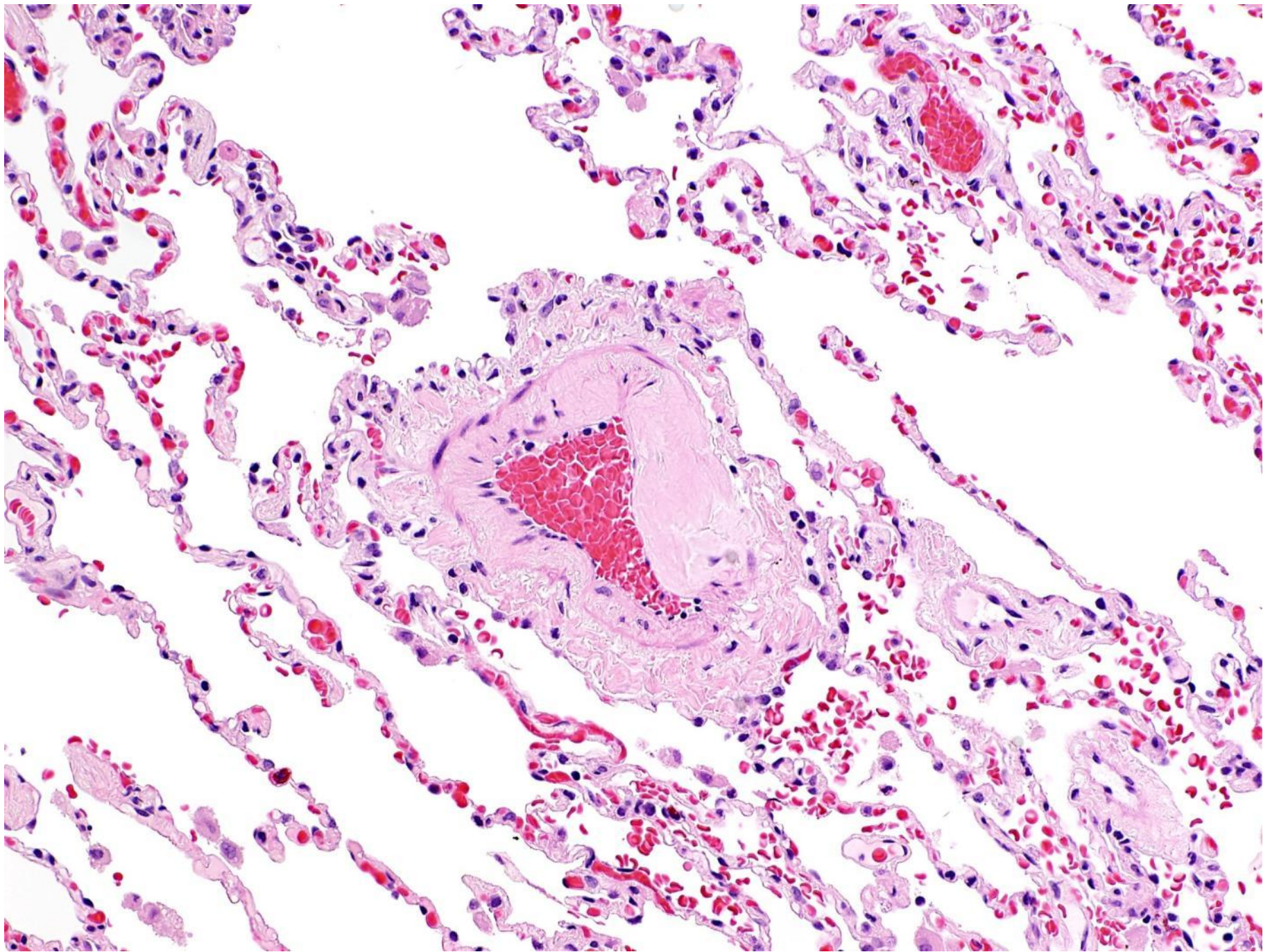


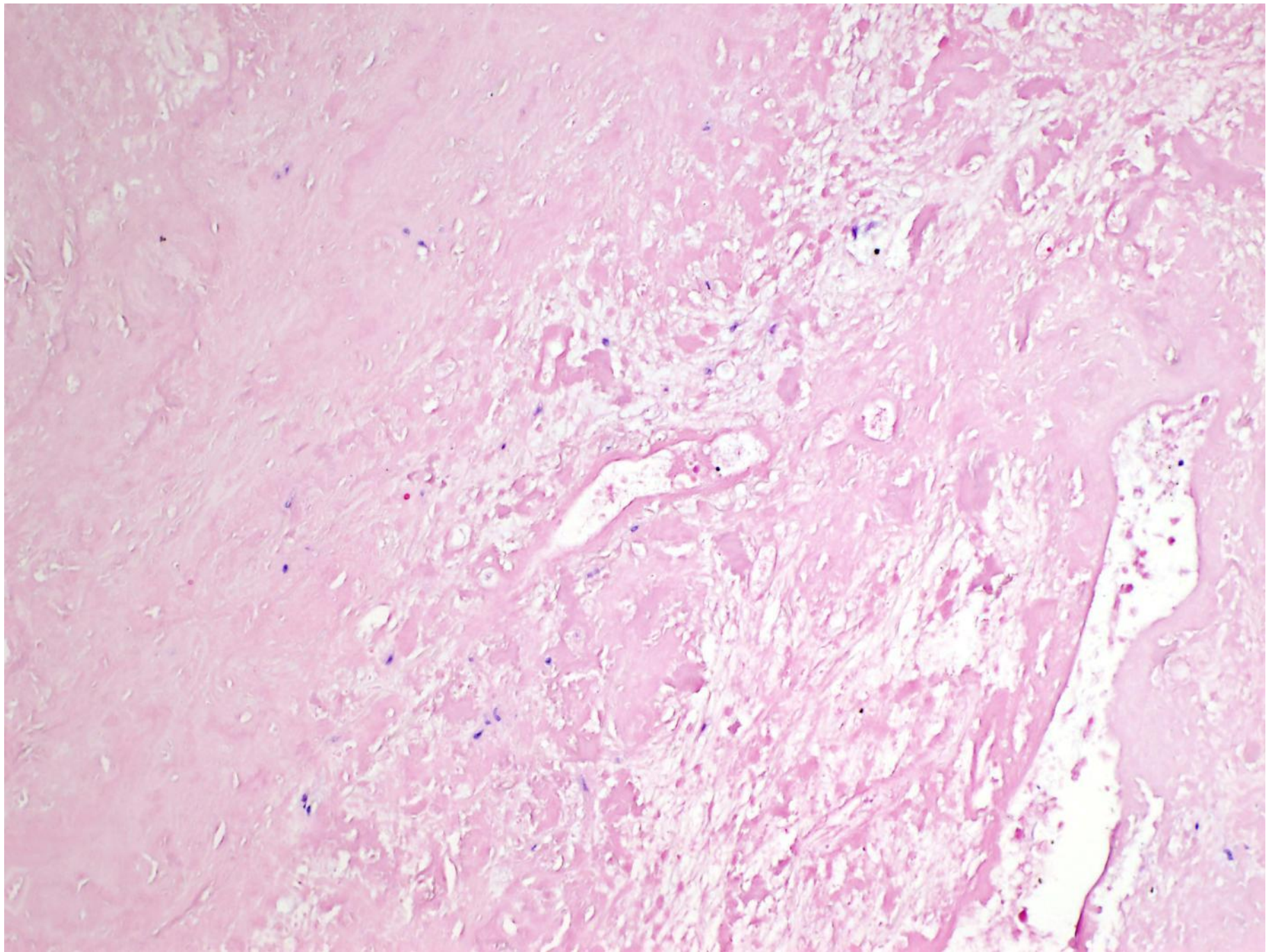
Miscellaneous lesions

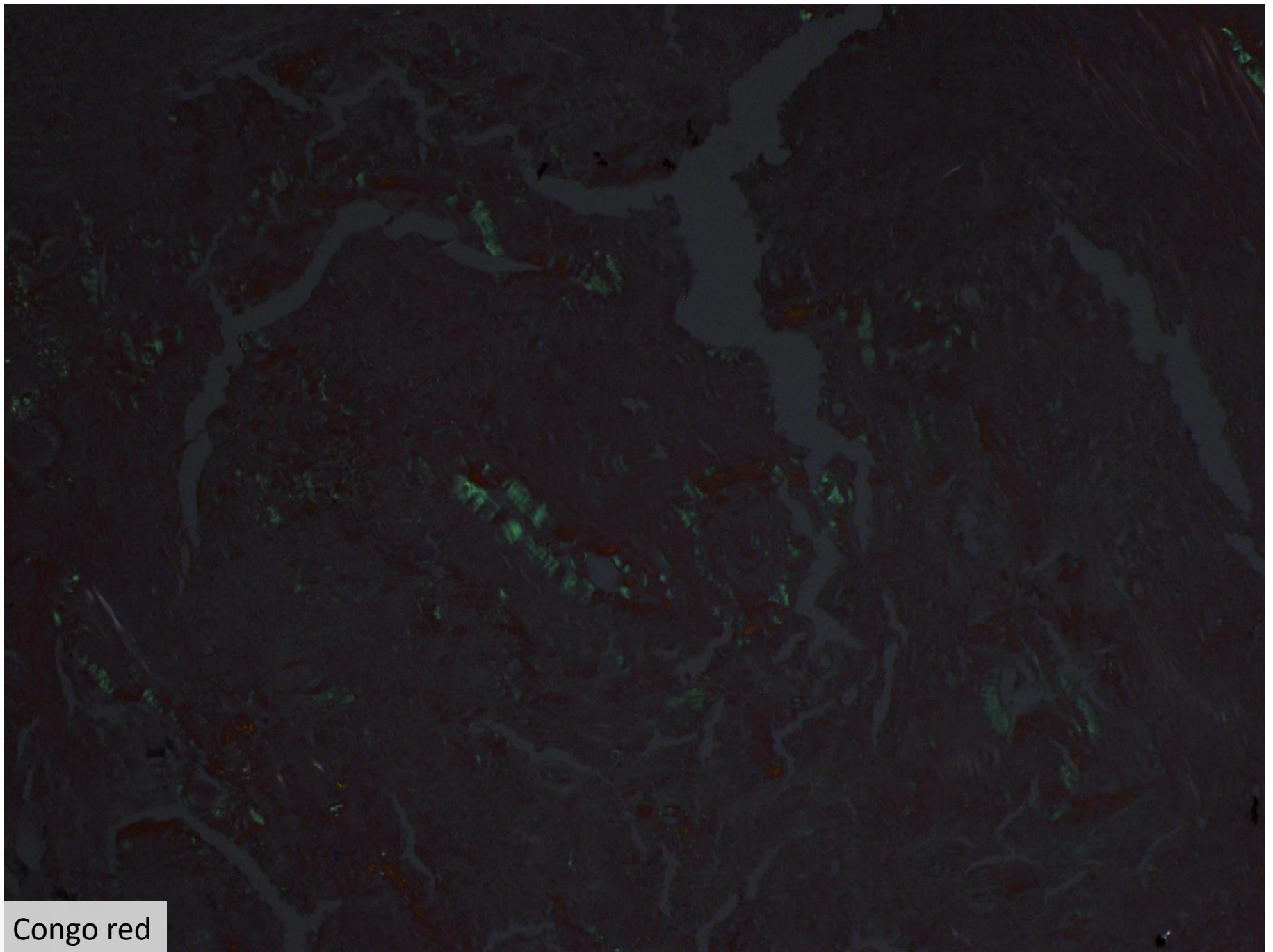
- Pulmonary amyloidosis
 - three main forms
 - nodular
 - tracheobronchial
 - diffuse parenchymal
 - RA, SLE, Sjögren







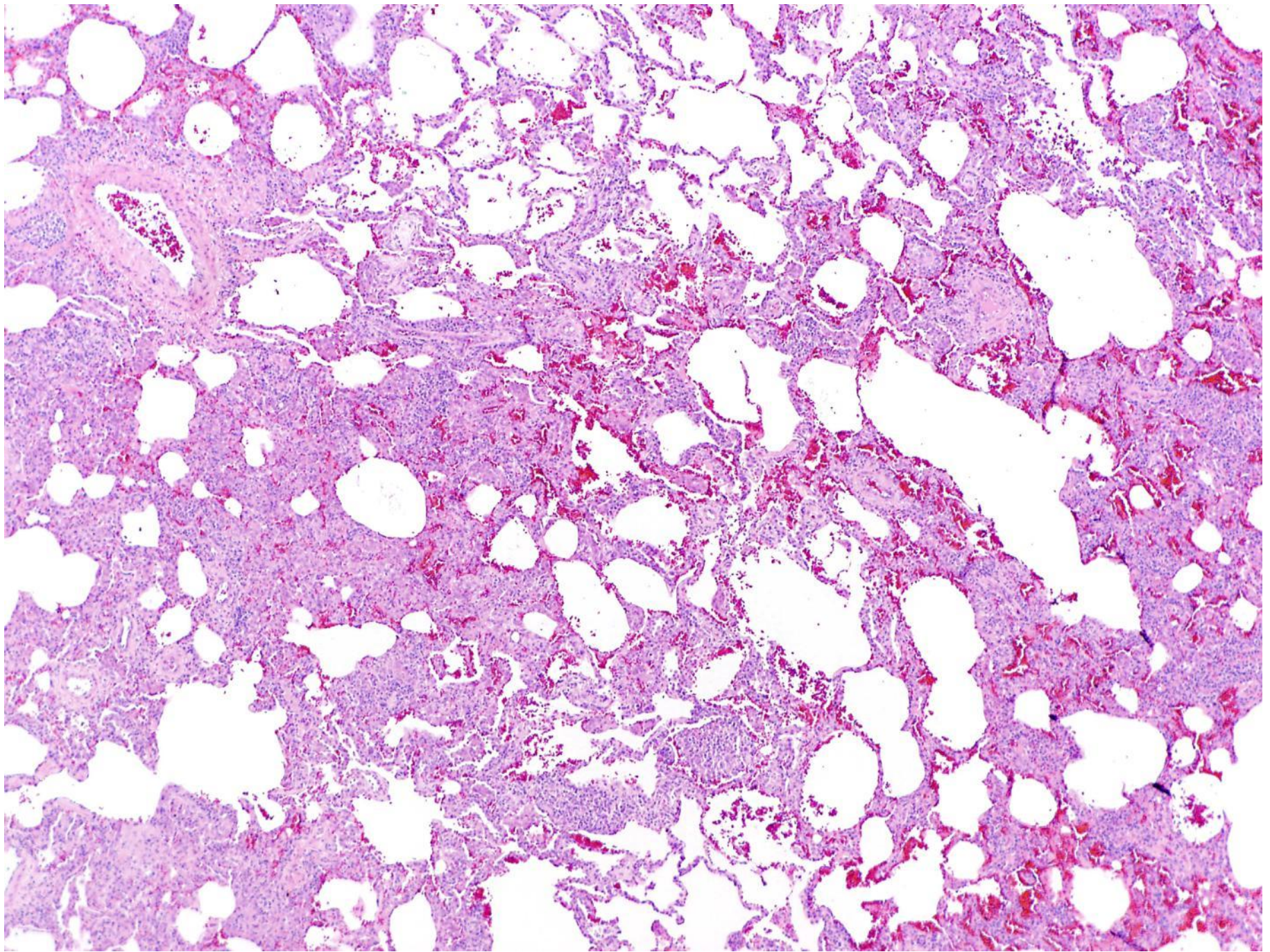


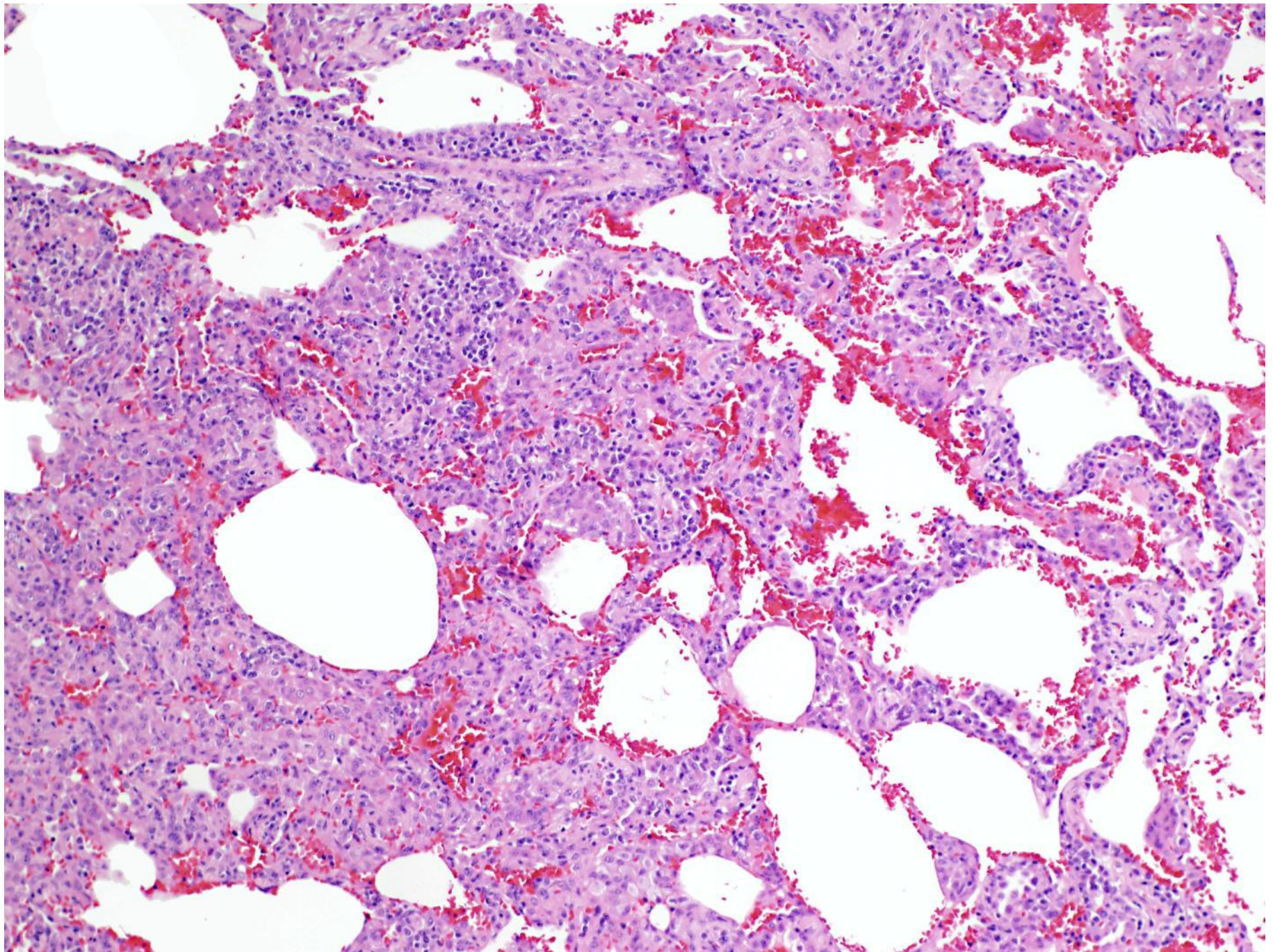


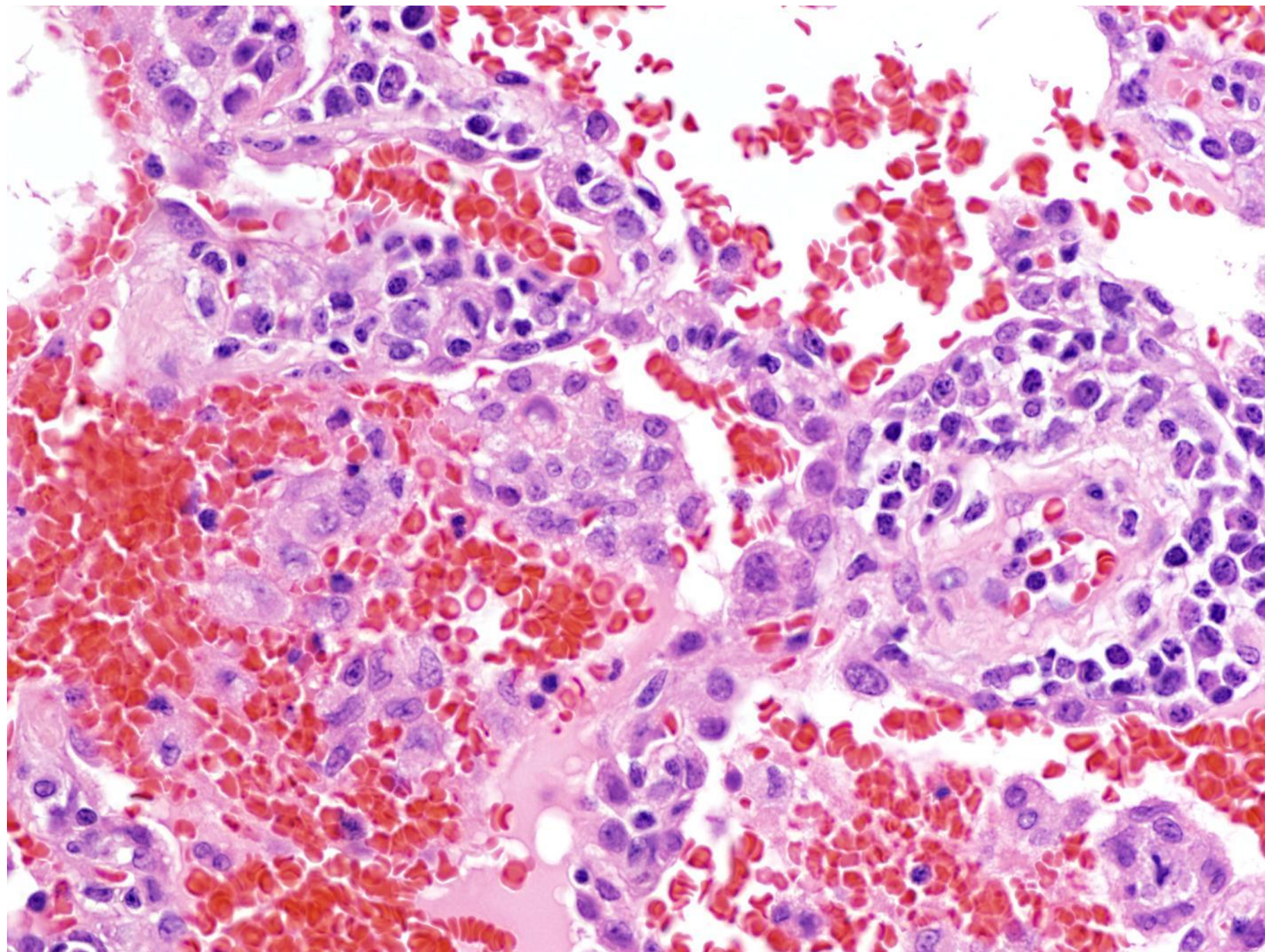
Congo red

Miscellaneous lesions

- Treatment complications
 - drug toxicity









This histological slide shows lung tissue affected by methotrexate pulmonary toxicity. The tissue is stained with hematoxylin and eosin (H&E). The alveolar spaces are filled with a dense infiltrate of inflammatory cells, primarily lymphocytes, which are stained purple. There is also a significant presence of red blood cells, appearing as bright red clusters, indicating hemorrhage. The overall architecture of the lung is disrupted by this inflammatory and hemorrhagic process.

Methotrexate pulmonary toxicity



PneumoTox,
the Drug-Ind...
MOBILE HEALTH

[OPEN](#)

PNEUMOTOX ON LINE

**Pascal Foucher,
Philippe Camus**

Department of Pulmonary
Diseases and Intensive Care Unit.
University Hospital.
Dijon - FRANCE



All Drugs (1)

All Patterns

**Methotrexate / Acute cellular
interstitial lung disease/pneumonia** >

**Methotrexate / Subacute interstitial
pneumonia. Similar to but less seve...** >

**Methotrexate / Pulmonary infiltrates
and eosinophilia. Eosinophilic pneu...** >

Methotrexate / Pulmonary fibrosis >

**Methotrexate / Diffuse alveolar
damage (DAD)** >

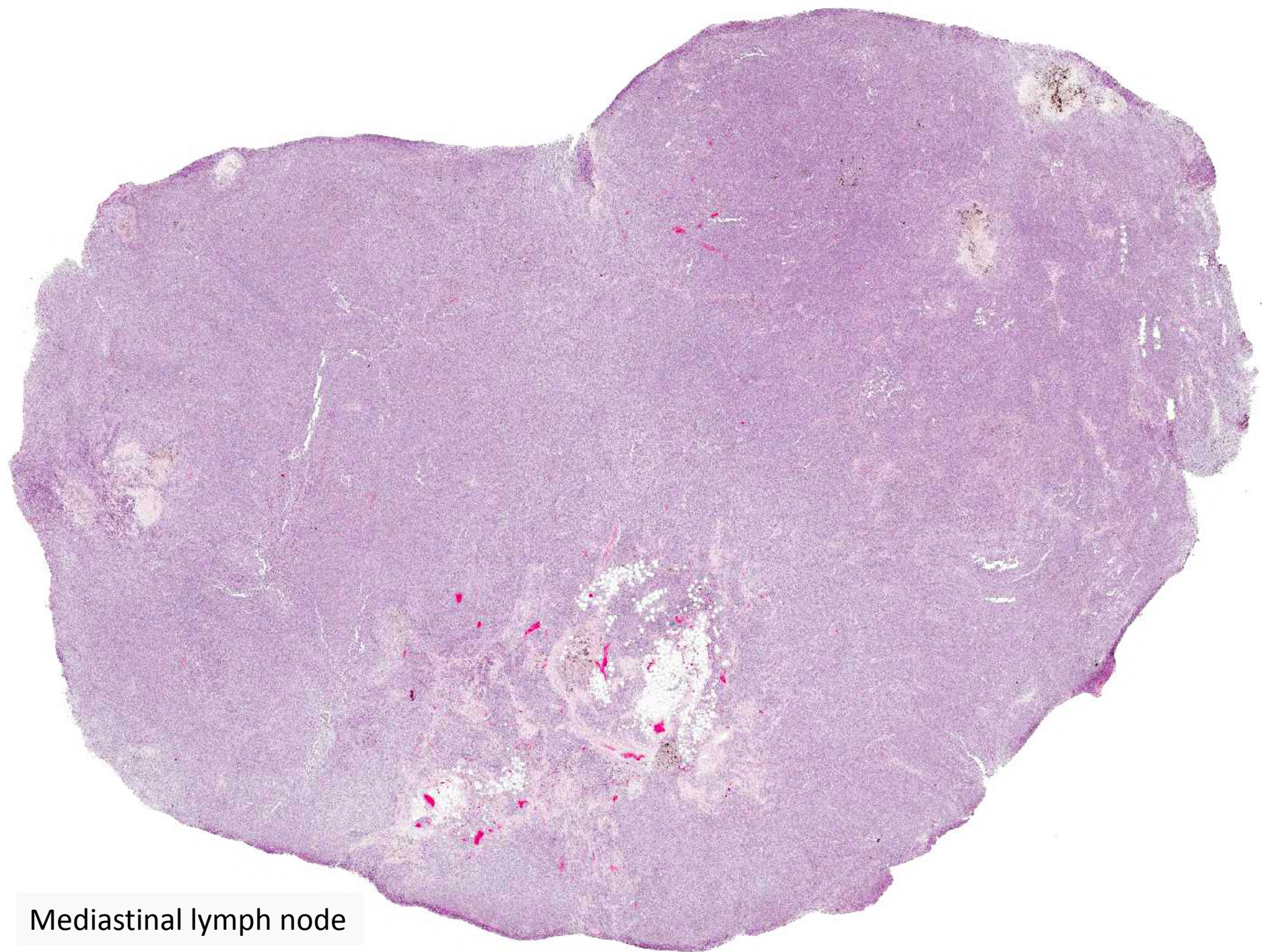
**Methotrexate / Interstitial lung
disease with granulomatous compo...** >

**Methotrexate / Transient benign non
cardiac pulmonary edema** >

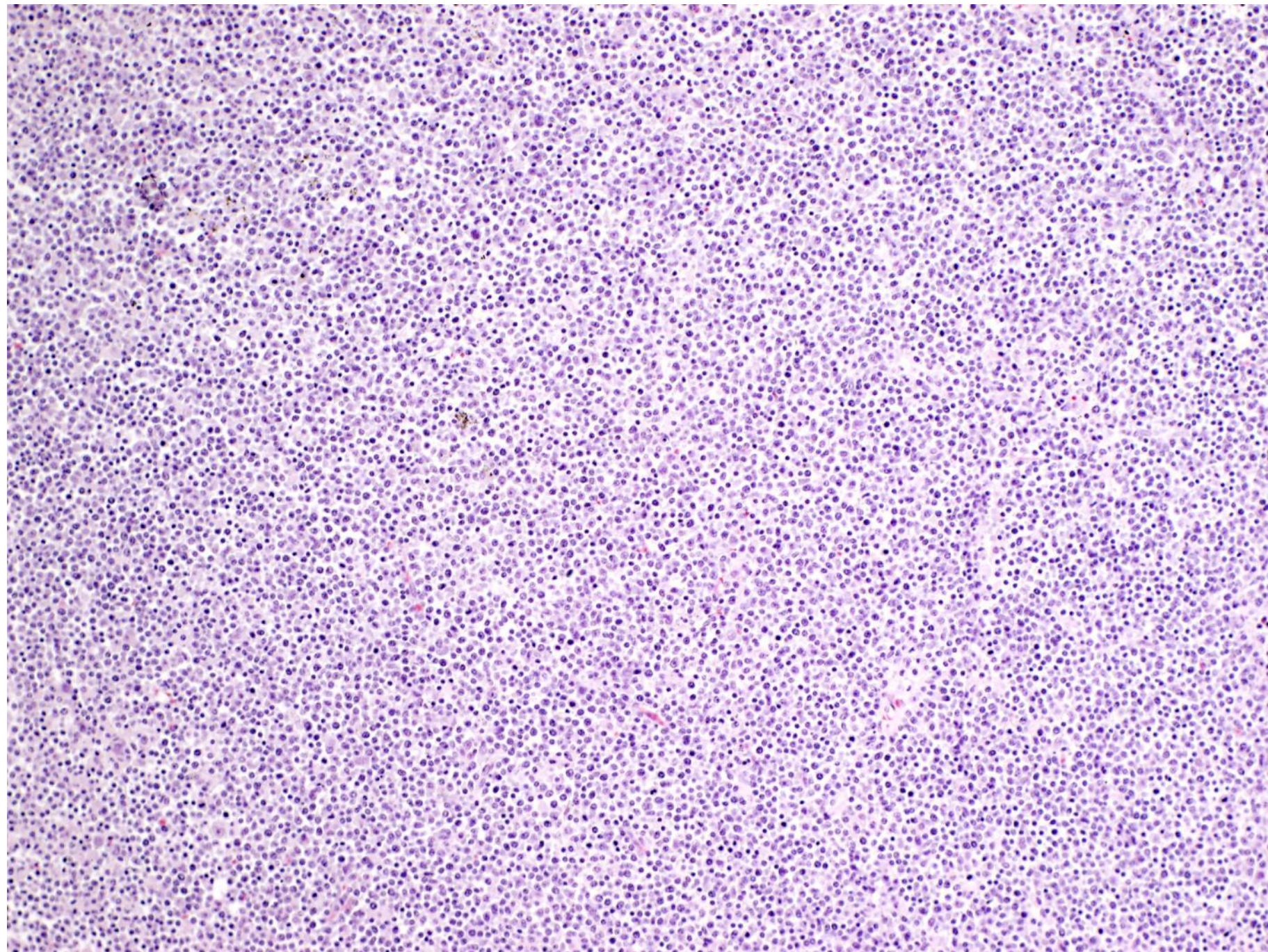
**Methotrexate / Acute severe
pulmonary oedema / ARDS** >

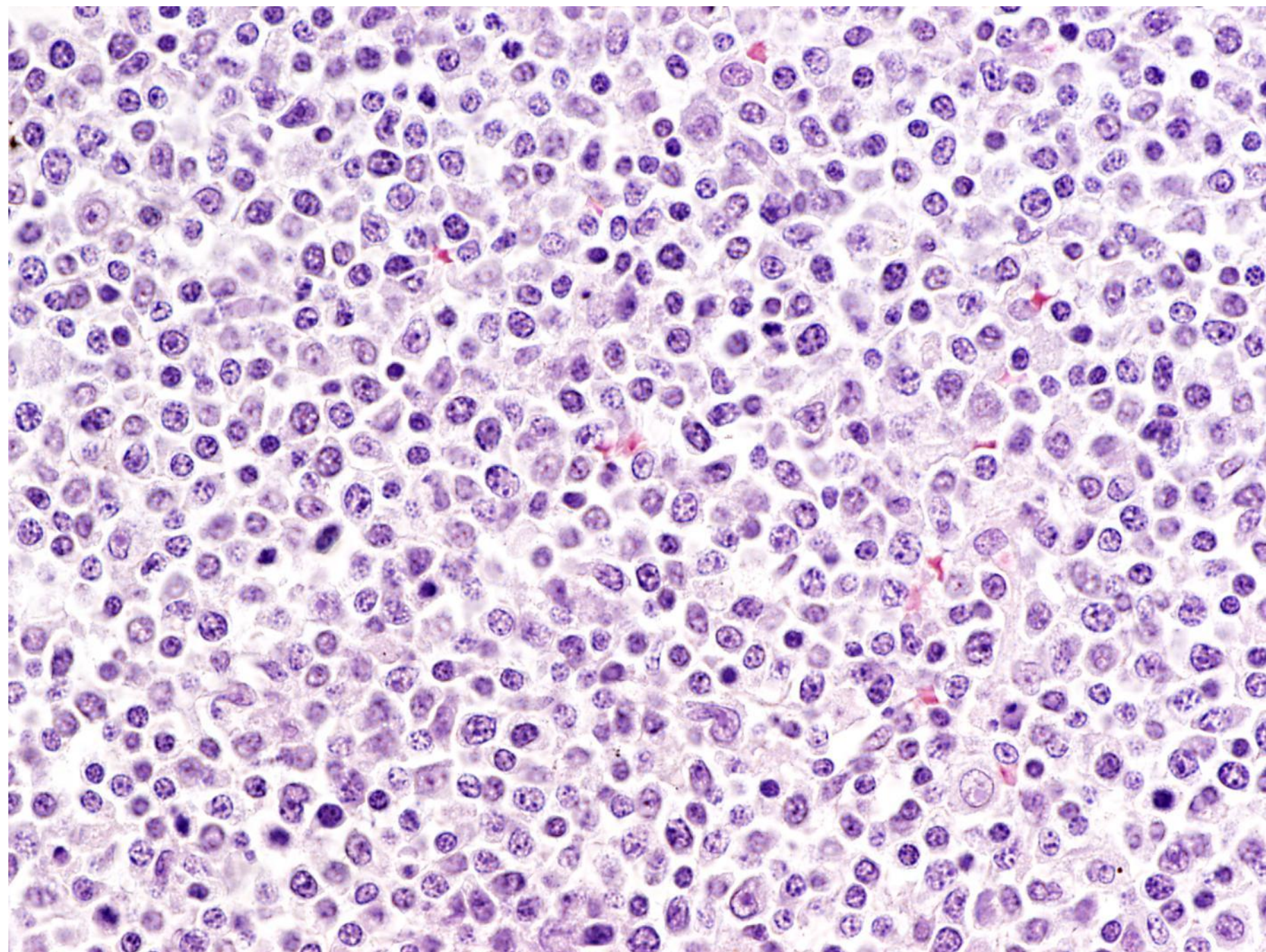
Miscellaneous lesions

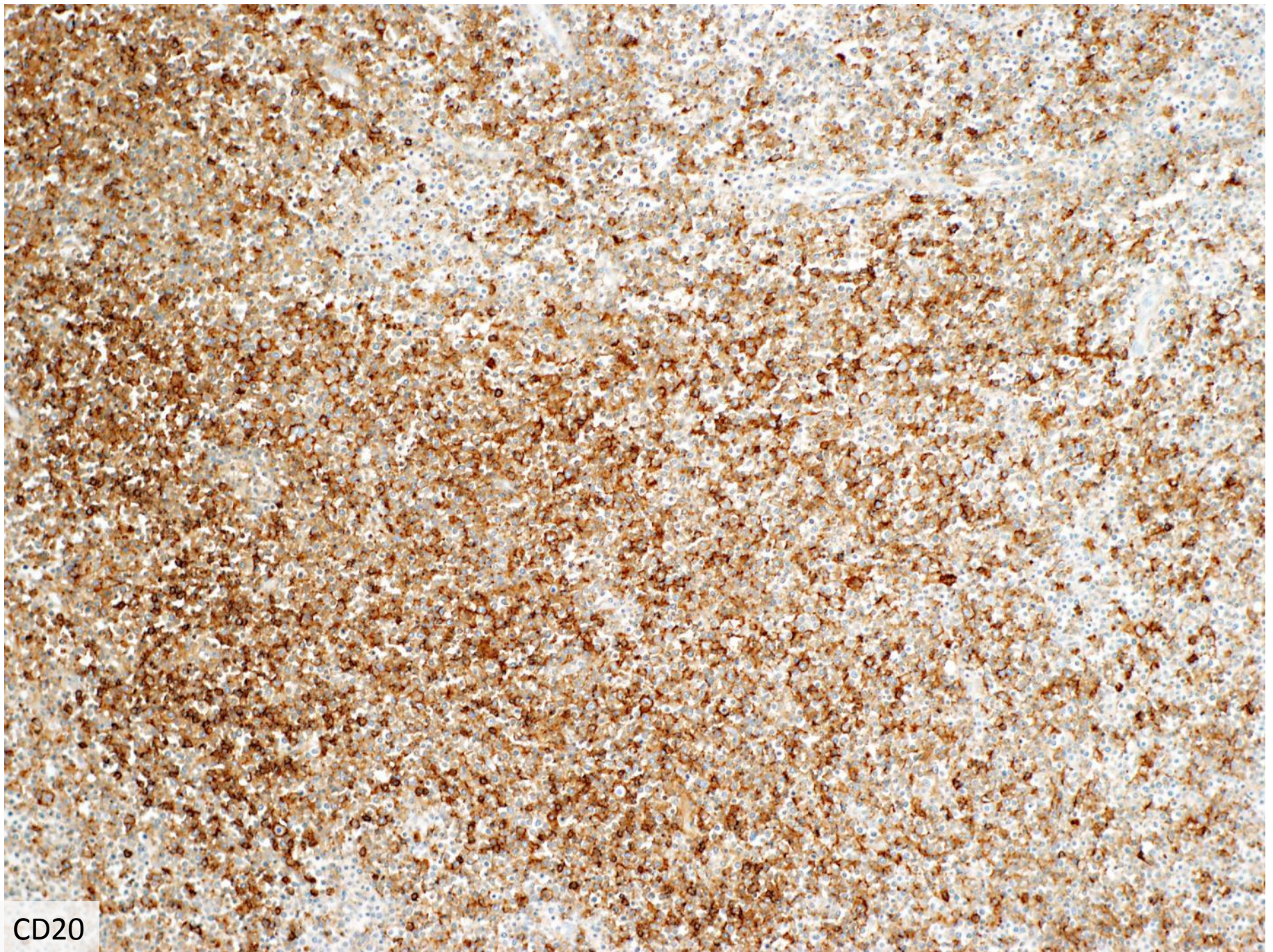
- Treatment complications
 - drug toxicity
 - secondary malignancy



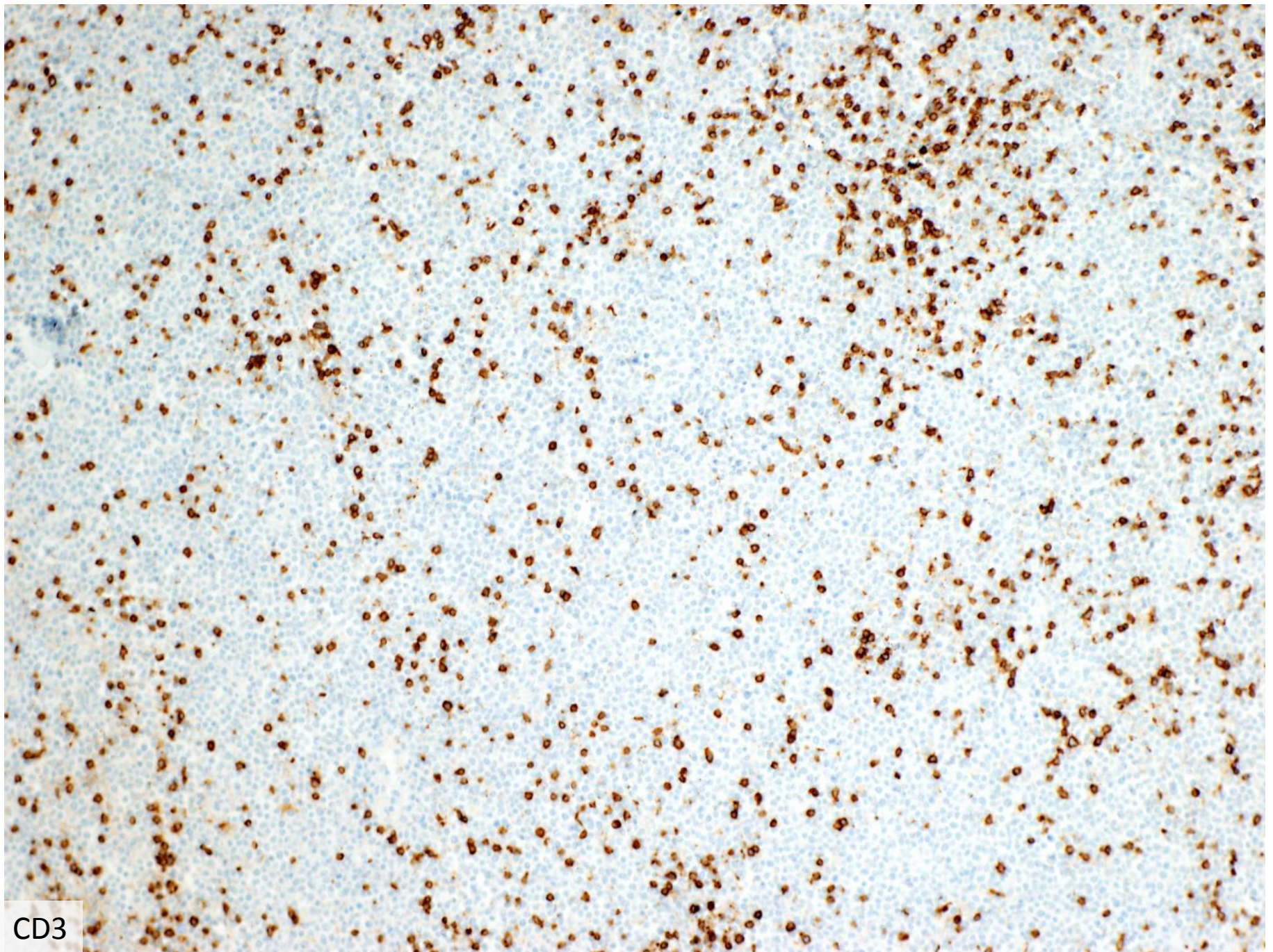
Mediastinal lymph node



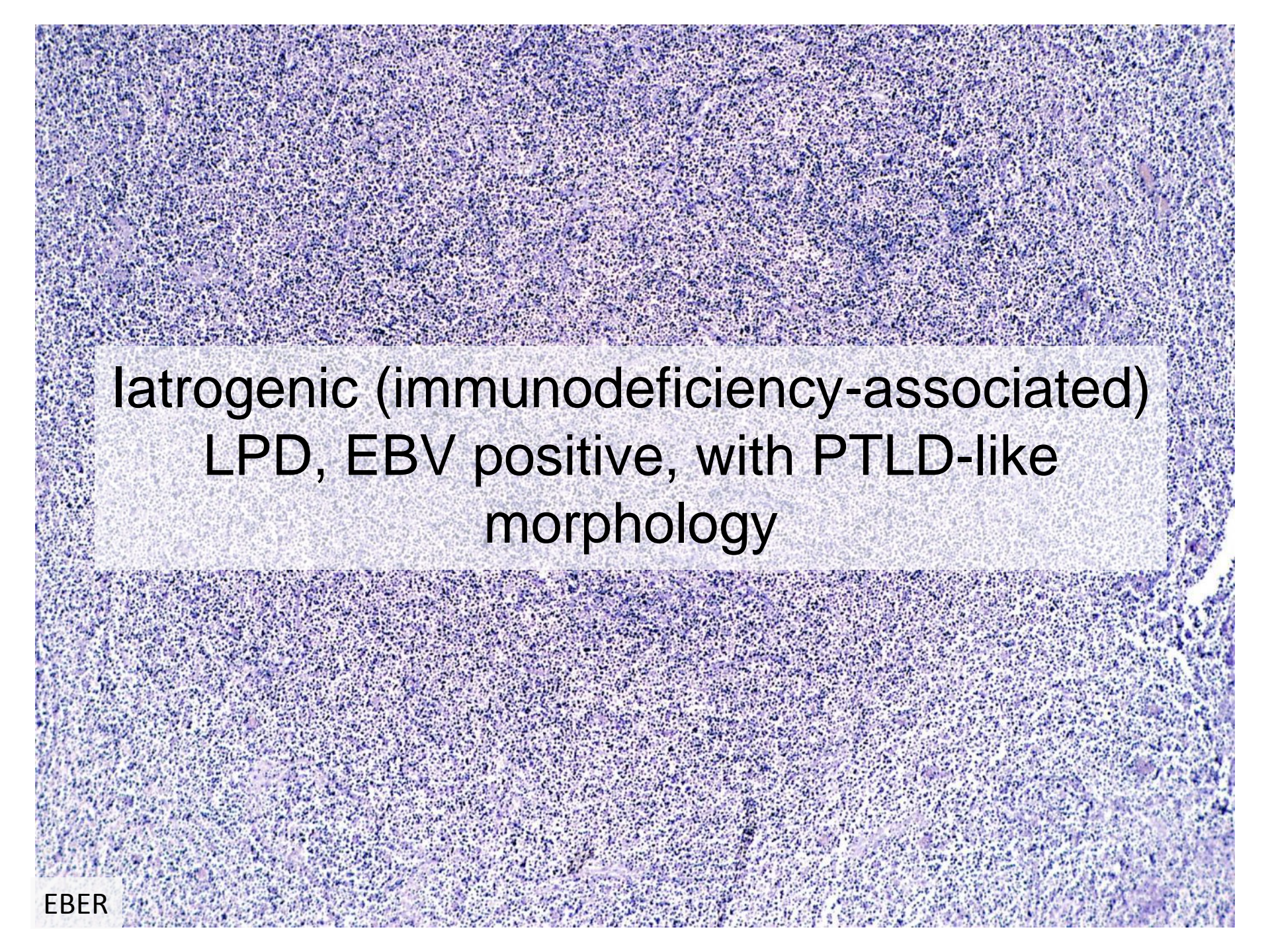




CD20



CD3



Iatrogenic (immunodeficiency-associated)
LPD, EBV positive, with PTLD-like
morphology

Key points

- CTDs can affect the lung in several ways
 - these are not specific to CTDs
- Pulmonary involvement may be initial manifestation
- Diagnosis of ILD is a multidisciplinary process

Pleuropulmonary Pathology of Autoimmune Connective Tissue Diseases

Mathieu C. Castonguay, MD, FRCP(C)

AP Divisional Web Conference

November 19, 2013